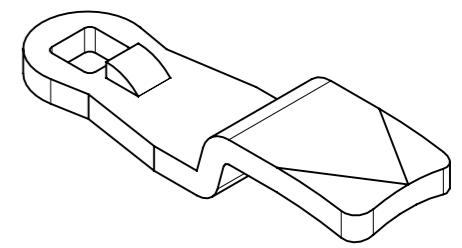
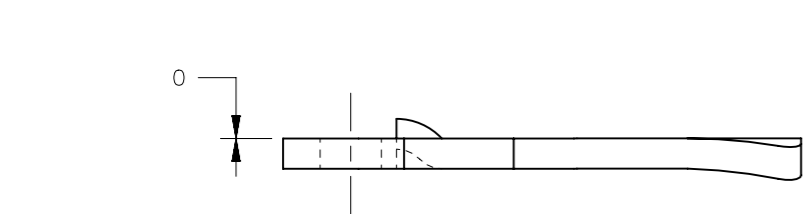
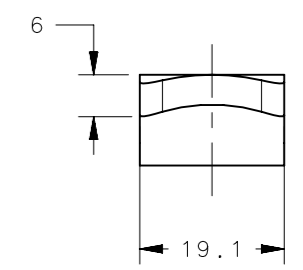
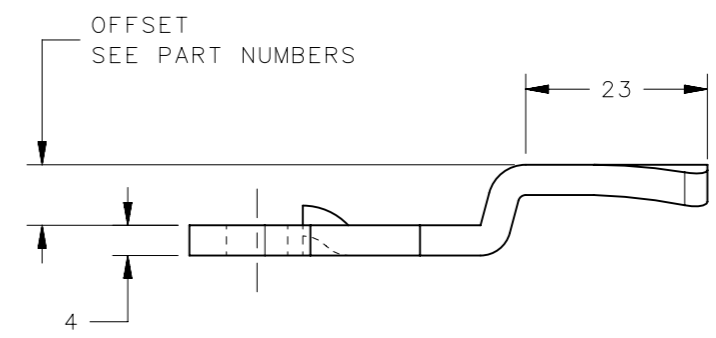
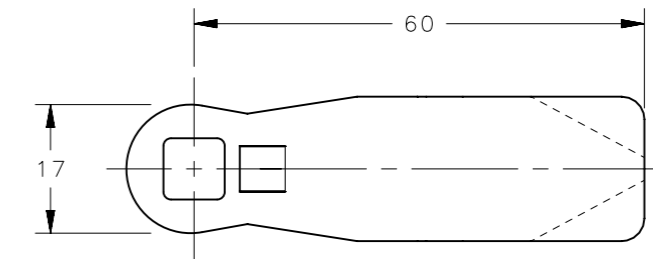


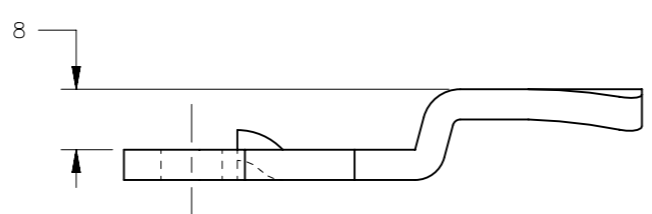
REVISION HISTORY			
REV	DATE	BY	DESCRIPTION
B	28AUG2012	DMS/YGC	PRN: P2009-0459



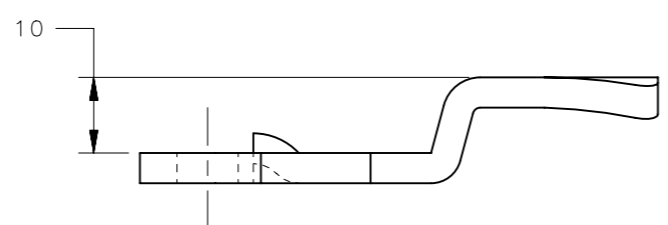
SCALE 1:1



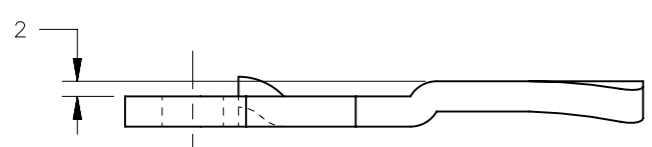
PART NUMBER: E5-6610  
YY=10



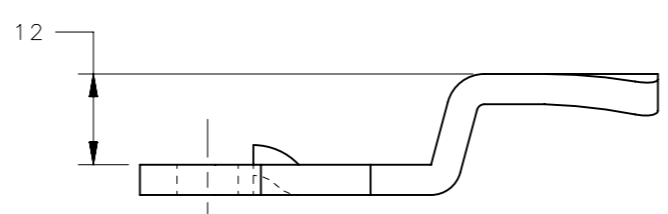
PART NUMBER: E5-6606  
YY=06



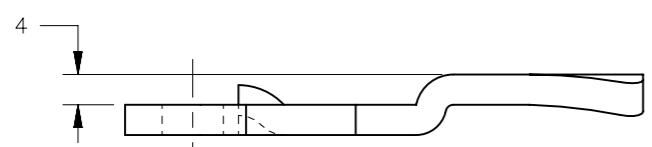
PART NUMBER: E5-6605  
YY=05



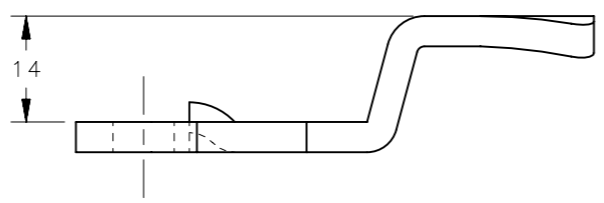
PART NUMBER: E5-6609  
YY=09



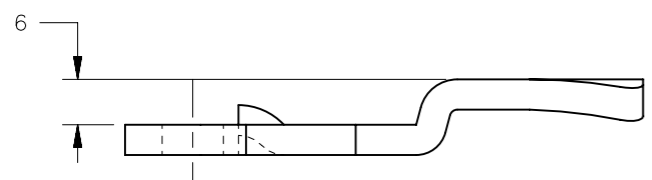
PART NUMBER: E5-6604  
YY=04



PART NUMBER: E5-6608  
YY=08



PART NUMBER: E5-6603  
YY=03



PART NUMBER: E5-6607  
YY=07

E5-66YY	E5 CAMS	STEEL	ZINC PLATE CHROMATE DIP
PART NUMBER	TYPE OF COMPONENT	MATERIAL	FINISH
THIRD ANGLE PROJECTION		 CONNECT • CREATE • INNOVATE	
MILLIMETERS [IN]			
TOLERANCES UNLESS OTHERWISE NOTED		DESCRIPTION	
ALL DIMENSIONS WITHOUT TOLERANCES ARE FOR REFERENCE ONLY.		E5 CAMS - BENT UP POSITION (TOOL SECURED)	
PROPRIETARY ITEM		SIZE A3	SYSTEM NX
EXCEPT FOR USES EXPRESSLY GRANTED IN WRITING, INFORMATION DISCLOSED HEREON IS CONFIDENTIAL AND ALL RIGHTS, PATENT AND OTHERWISE, ARE RESERVED BY SOUTHCO, INC.		DWG NO. J-E5-66-B	
PER ASME Y14.5M-1994		DRAWN BY KPL	DATE 30NOV2007
		SCALE 1:1	SHEET 1 OF 1