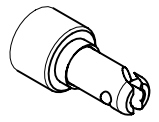
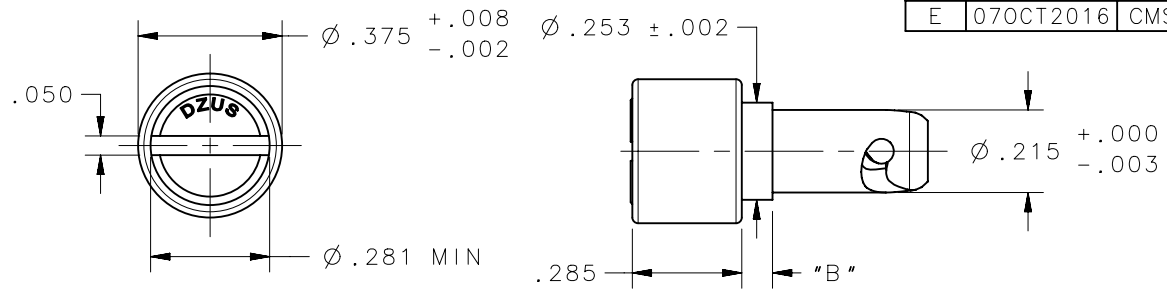
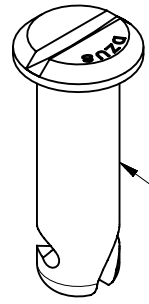


REVISION HISTORY			
REV	DATE	BY	DESCRIPTION
E	07OCT2016	CMS/JW	PRN: P2016-2296



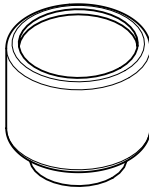
SCALE 1:1



STUD



SPRING



CUP

NOTES:

- REMOVE ALL BURRS AND BREAK SHARP CORNERS.
- ALL CORNERS AND FILLETS R.005 MAX.
- MATERIALS:
STUD: 4037 OR 8620 STEEL, HEAT TREATED ROCKWELL C30-38.
CUP: 1008/1010 STEEL.
SPRING: MUSIC WIRE PER ASTM-A228.
- FINISH: PLEASE REFER TO J-D5-0-3 FOR FINISH INFORMATION AND SPECIFICATIONS.

D5FCI PART NUMBER	SOUTHCO PART NUMBER	PANEL THICKNESS RANGE	"B" DIMENSION
3506-SC44CP2-K3B	D5PFSC3544CP2KBBNA	.060-.069	0.080
3506-SC50CP2D-K3B	D5-PFSC3550CP2DKBB	.060-.069	0.080
3506-SC46CP6-Z3CT	D5PFSC3546CP6ZCTNA	.120-.129	0.140
3506-SC46CP26-SS	D5PFSC3546CP26SSNA	.050-.059	0.070
3506-SC45CP2-EEMBT	D5PFSC3545CP2SBTNA	.060-.069	0.080
3506-SC45CP2-Z3B	D5PFSC3545CP2ZBBNA	.060-.069	0.080
3506-SC39CP2-Z3B	D5PFSC3539CP2ZBBNA	.060-.069	0.080
3506-SC42CP2-Z3B	D5PFSC3542CP2ZBBNA	.060-.069	0.080
3506-SC48CP2-Z3B	D5PFSC3548CP2ZBBNA	.060-.069	0.080
3506-SC45CP2-Z3BT	D5PFSC3545CP2ZBTNA	.060-.069	0.080
3506-SC46CP2-SS	D5-PFSC3546CP2SSNA	.060-.069	0.080
3506-SC50CP2-C3C	D5PFSC3550CP2CBCNA	.060-.069	0.080
3506-SC50CP2-Z3BT	D5PFSC3550CP2ZBTNA	.060-.069	0.080
3506-SC58CP2-EEMBT	D5-PFSC3558CP2BTNA	.060-.069	0.080
3506-SC63CP2-BOC	D5-PFSC3563CP2RBNA	.060-.069	0.080
3506-SC69CP2-SS-BOF	D5-PFSC3569CP2SSBA	.060-.069	0.080
3506-SC83CP2-Z3CT	D5PFSC3583CP2ZCTNA	.060-.069	0.080
3506-SC47CP4-BOC	D5-PFSC3547CP4RBNA	.090-.099	0.110
3506-SC47CP4-EEB	D5PFSC3547CP4SEBNA	.090-.099	0.110
3506-SC56CP4-EEB	D5PFSC3556CP4SEBNA	.090-.099	0.110
3506-SC56CP4-Z3CT	D5PFSC3556CP4ZCTNA	.090-.099	0.110
3506-SC46CP6-SS	D5-PFSC3546CP6SSNA	.120-.129	0.140
3506-SC53CP6-Z3B	D5PFSC3553CP6ZBBNA	.120-.129	0.140
3506-SC53CP6-Z3CT	D5PFSC3553CP6ZCTNA	.120-.129	0.140
3506-SC54CP6-EEG	D5PFSC3554CP6SEGNA	.120-.129	0.140
3506-SC51CP14-Z5B	D5-PFSC3551CP14Z5B	.170-.179	0.190
3506-SC51C14-EEB	D5-PFSC3551CP14SEB	.170-.179	0.190
3506-SC57CP22-C3C	D5-PFSC3557CP22CBC	.246-.255	0.266
3506-SC57CP22-Z3CT	D5-PFSC3557CP22ZCT	.246-.255	0.266

THIRD ANGLE PROJECTION		 CONNECT • CREATE • INNOVATE	
INCHES [MM]			
TOLERANCES UNLESS OTHERWISE NOTED		DESCRIPTION	
ALL DIMENSIONS WITHOUT TOLERANCES ARE FOR REFERENCE ONLY.		PANEL LINE STUD	
PROPRIETARY ITEM <small>EXCEPT FOR USES EXPRESSLY GRANTED IN WRITING, INFORMATION DISCLOSED HEREON IS CONFIDENTIAL AND ALL RIGHTS, PATENT AND OTHERWISE, ARE RESERVED BY SOUTHCO, INC.</small>	PER ASME Y14.5M-1994	SIZE A	SYSTEM NX
		DWG NO. J-D5-PFSC35CPNA	
		DRAWN BY CMS/NJF	DATE 08JUL2015
		SCALE 2:1	SHEET 1 OF 1