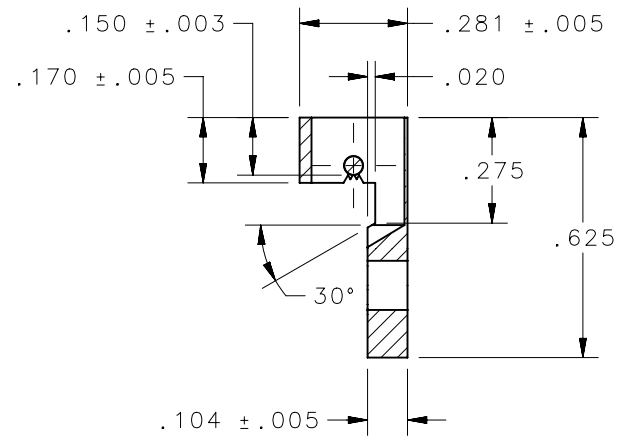
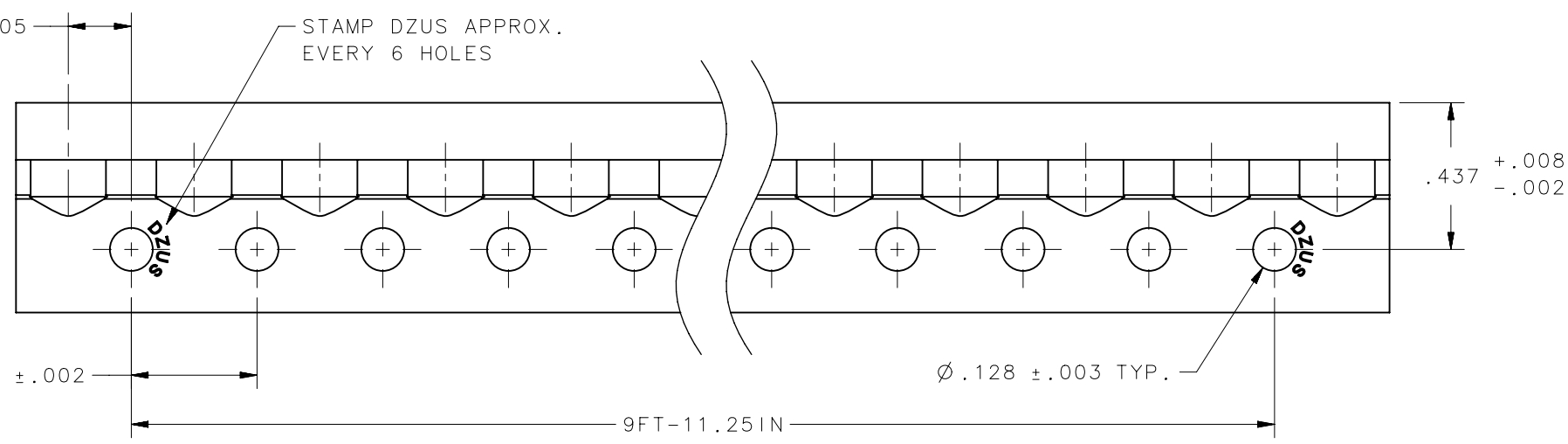
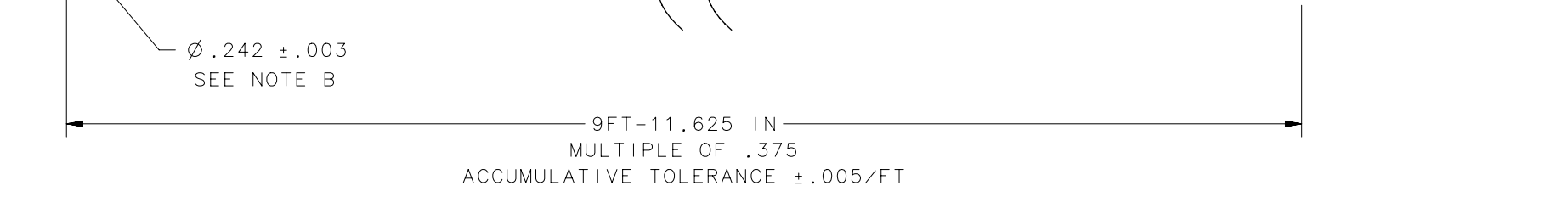
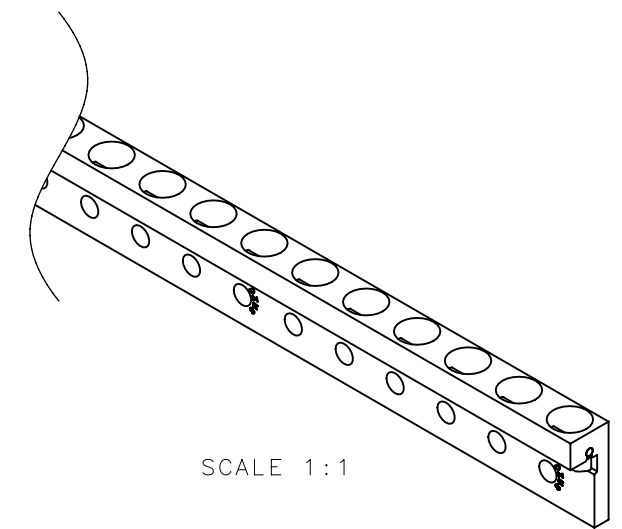
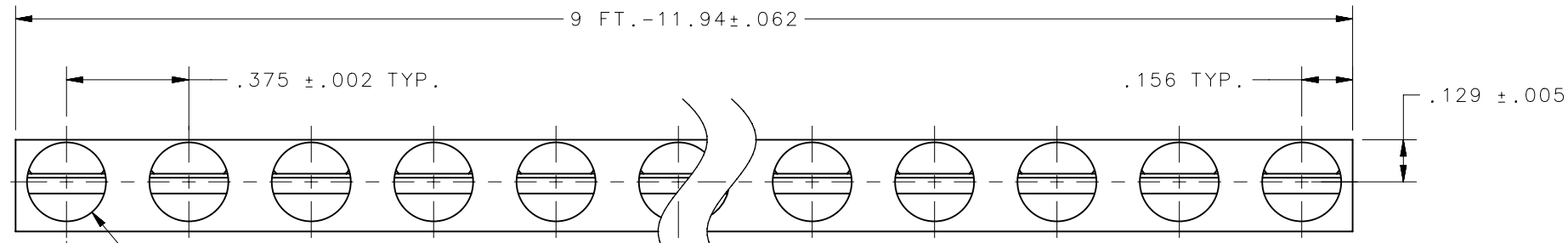


REVISION HISTORY			
REV	DATE	BY	DESCRIPTION
E	03DEC2015	CMS/NJF	PRN: P2015-2431



NOTES:

A. MATERIAL:
 STRIP: 6061-T6 ALUMINUM PER AMS-QQ-A-200A.
 WIRE: Ø.050" 316 SPRING TEMPER, CONDITION B per ASTM A313/A313M.

B. SOME DISTORTION MAY ENTER THE Ø.242 HOLE DUE TO STAKING OF WIRE. THIS WILL NOT AFFECT THE FUNCTION OF THE PRODUCT.

MIL-F-25173A* APPROVED

* MEETS THE DESIGN, PHYSICAL AND PERFORMANCE REQUIREMENTS OF MIL-F-25173A. HOWEVER, FULL MECHANICAL PROPERTIES TESTING MAY NOT BE PERFORMED ON EACH PRODUCTION LOT.

WIRE	-	SEE NOTE A	NATURAL
STRIP	-	SEE NOTE A	NATURAL
ASSEMBLY	SEE TABLE	-	-
TYPE OF COMPONENT	SOUTHCO PART NUMBER	MATERIAL	FINISH

DFCI PART NUMBER	DZUS PART NUMBER	SOUTHCO PART NUMBER	L ^{+ .000} _{-.125} IN	NUMBER OF HOLES
3590-H320	PR35	D5-PR35NA	120 in / 3048mm	320
3590-HS9	PR35S9	D5-PR35S9NA	108 in / 2743.3mm	288
3590-HS7	PR35S7	D5-PR35S7NA	84 in / 2133.6mm	224
3590-HS5	PR35S5	D5-PR35S5NA	60 in / 1524mm	160
3590-HS3	PR35S3	D5-PR35S3NA	36 in / 914.4mm	96

THIRD ANGLE PROJECTION			
INCHES [MM]			
CAGE CODE 72794		DESCRIPTION	
TOLERANCES UNLESS OTHERWISE NOTED		D5 RIGHT ANGLE RECEPTACLE STRIP	
X° ±2°		SIZE B	
X/X..... ±1/32		SYSTEM NX	
.XX..... ±.015		DWG NO. J-D5-PR35NA	
.XXX..... ±.010		DRAWN BY CMS/BGL	
MACHINE FINISH		DATE 20MAR2015	
PER ASME Y14.5M-1994		SCALE 2:1	
		SHEET 1 OF 1	