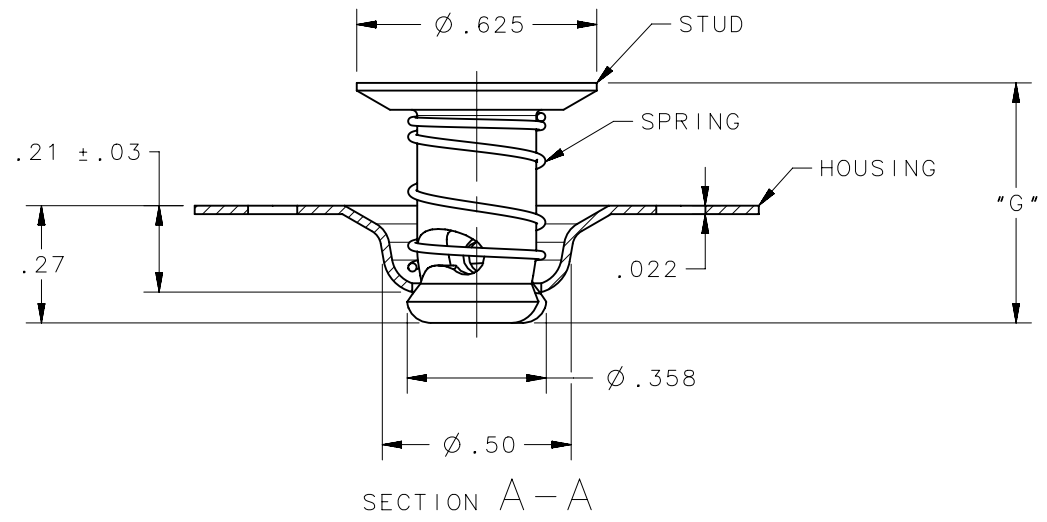


REVISION HISTORY			
REV	DATE	BY	DESCRIPTION
B	05FEB2016	CMS/NJF	PRN: P2016-0269



SCALE 1:1



1258-F540-C3C	D4-EHF5-40CBCNA	0.400
1258-F540-Z3BT	D4-EHF5-40ZBCNA	0.400
1258-F540-Z3C	D4-EHF5-40ZBTNA	0.400
1258-F540-Z3CT	D4-EHF5-40ZCTNA	0.400
1258-F545-Z3CT	D4-EHF5-45ZCTNA	0.450
1258-F550-C3C	D4-EHF5-50CBCNA	0.500
1258-F550-Z3C	D4-EHF5-50ZBCNA	0.500
1258-F560-Z3C	D4-EHF5-60ZBCNA	0.600
1258-F560-C3C	D4-EHF5-60CBCNA	0.600
1258-F560-Z3CT	D4-EHF5-60ZCTNA	0.600
1258-F565-Z3C	D4-EHF5-65ZCTNA	0.650
1258-F565-Z3CT	D4-EHF5-65ZBCNA	0.650
1258-F570-Z3C	D4-EHF5-70ZBCNA	0.700
1258-F570-Z3CT	D4-EHF5-70ZCTNA	0.700
1258-F575-Z3CT	D4-EHF5-75ZCTNA	0.750
1258-F585-Z3CT	D4-EHF5-85ZCTNA	0.850
<b>DFCI PART NUMBER</b>	<b>SOUTHCO PART NUMBER</b>	<b>"G"</b>

NOTES:

- A. MATERIAL:  
 STUD: AISI 8620 STEEL, HEAT TREATED TO ROCKWELL C27-33.  
 HOUSING: AISI C1008/C1010 STEEL.  
 SPRING: 302/316 STAINLESS STEEL, SPRING TEMPER.
- B. FINISH:  
 SEE J-D5-0-3 FOR FINISH INFORMATION & SPECIFICATIONS.

	THIRD ANGLE PROJECTION
	INCHES [MM]
	TOLERANCES UNLESS OTHERWISE NOTED
	X° ..... ± 2°
	X/X ..... ± 1/32
	.XX ..... ± .015
	.XXX ..... ± .010
PROPRIETARY ITEM	
EXCEPT FOR USES EXPRESSLY GRANTED IN WRITING, INFORMATION DISCLOSED HEREON IS CONFIDENTIAL AND ALL RIGHTS, PATENT AND OTHERWISE, ARE RESERVED BY SOUTHCO, INC.	
	PER ASME Y14.5M-1994

**southco**<sup>®</sup>  
CONNECT • CREATE • INNOVATE

DESCRIPTION  
EJECT STUD ASSEMBLY

SIZE A	SYSTEM NX	DWG NO. J-D4-EHF5NA
DRAWN BY CMS/NJF	DATE 03AUG2015	SHEET 1 OF 1