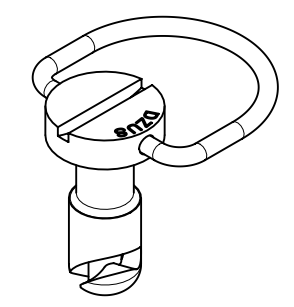
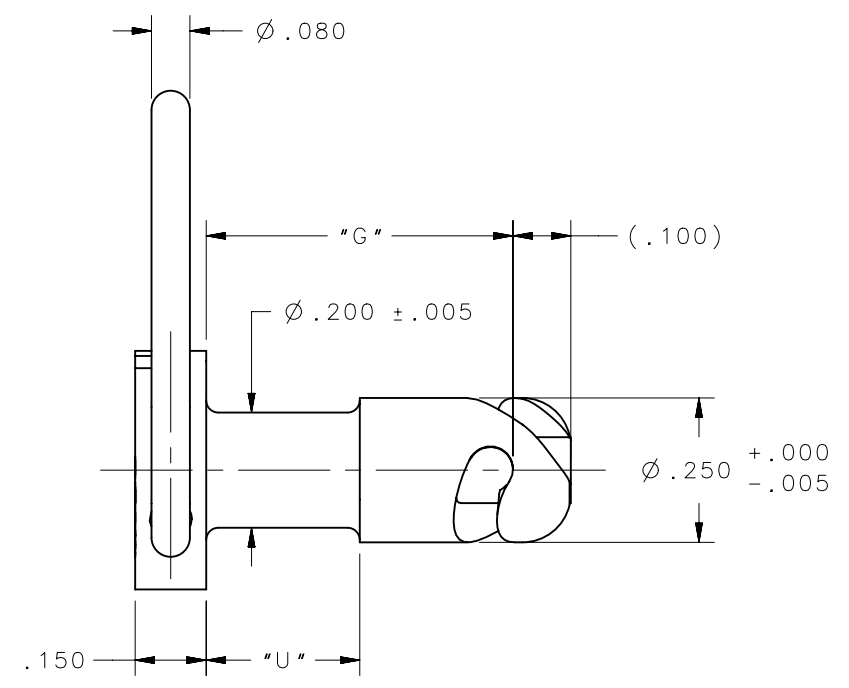
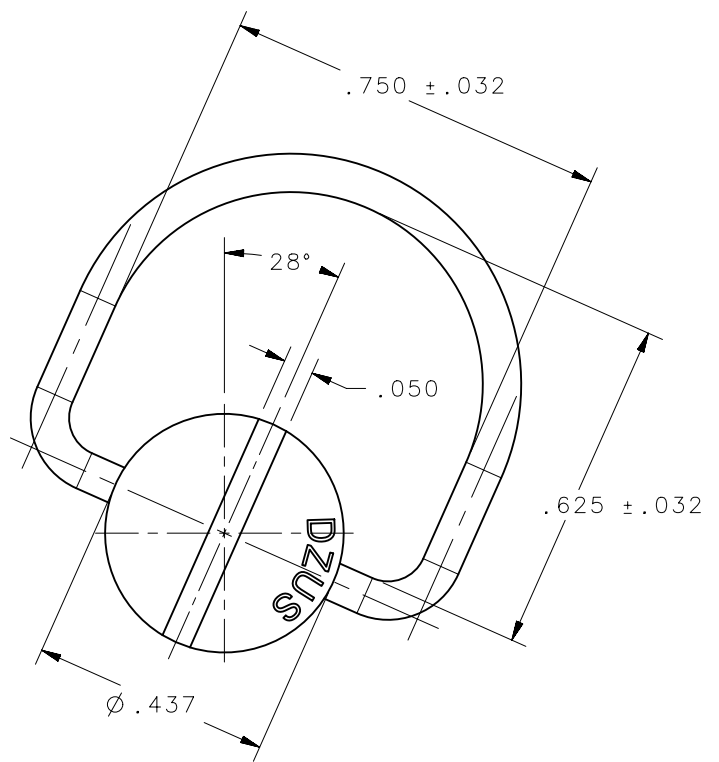


REVISION HISTORY			
REV	DATE	BY	DESCRIPTION
A	30SEP2016	CMS/JW	PRN: P2016-2253



SCALE 2:1

122J-R430-Z3C	D4-BJR4-30ZBCNA	0.300	0.100	SEE NOTE A	SEE NOTE C		
122J-R435-Z3C	D4-BJR4-3ZBCNA	0.350	0.150				
122J-R435-Z3CT	D4-BJR4-35ZCTNA	0.350	0.150				
122J-R440-Z3C	D4-BJR4-40ZBCNA	0.400	0.200				
122J-R440-Z3CT	D4-BJR4-40ZCTNA	0.400	0.200				
122J-R445-Z3C	D4-BJR4-45ZBCNA	0.450	0.225				
122J-R445-Z3CT	D4-BJR4-45ZCTNA	0.450	0.225				
122J-R455-Z3C	D4-BJR4-55ZBCNA	0.550	0.275				
122J-R455-Z3CT	D4-BJR4-55ZCTNA	0.550	0.275				
122J-R460-Z3C	D4-BJR4-60ZBCNA	0.600	0.300				
122J-R465-Z3CT	D4-BJR4-65ZCTNA	0.650	0.350				
122J-R470-Z3C	D4-BJR4-70ZBCNA	0.700	0.350				
122J-R475-Z3C	D4-BJR4-75ZBCNA	0.750	0.400				
122J-R475-Z3CT	D4-BJR4-75ZCTNA	0.750	0.400				
122J-R480-Z3C	D4-BJR4-80ZBCNA	0.800	0.400				
122J-R485-Z3C	D4-BJR4-85ZBCNA	0.850	0.500				
122J-R490-Z3C	D4-BJR4-90ZBCNA	0.900	0.500				
122J-R4120-SS	D4-BJR4-120SSNA	1.200	0.600			SEE NOTE B	
122J-R435-SS	D4-BJR4-35SSNA	0.350	0.150				
122J-R440-Z3BT	D4-BJR4-40ZBTNA	0.400	0.200				
122J-R440-SS	D4-BJR4-40SSNA	0.400	0.200				
122J-R445-SS	D4-BJR4-45SSNA	0.450	0.225				
122J-R450-SS	D4-BJR4-50SSNA	0.500	0.250				
122J-R465-SS	D4-BJR4-65SSNA	0.650	0.350				
DFCI PART NO.	SOUTHCO PART NO.	DIM "G"	DIM "U"	MATERIAL	FINISH		

NOTES:

- A. STUD: 8620 STEEL, HEAT TREATED TO ROCKWELL C27-33.  
RING: HIGH CARBON STEEL, HEAT TREATED TO ROCKWELL C40-45.
- B. STUD: 303 STAINLESS STEEL  
RING: 420 STAINLESS STEEL
- C. SEE J-D5-0-3 FOR FINISH INFORMATION AND SPECIFICATIONS.

THIRD ANGLE PROJECTION					
INCHES [MM]					
TOLERANCES UNLESS OTHERWISE NOTED		DESCRIPTION			
X° ..... ±2°		BAIL HEAD STUD			
X/X ..... ±1/32		SIZE	SYSTEM	DWG NO.	
.XX ..... ±.015		B	NX	J-D4-BJR4NA	
.XXX ..... ±.010					
PER ASME Y14.5M-1994		DRAWN BY	DATE	SCALE	SHEET
		CMS/NJF	25SEP2015	4:1	1 OF 1

PROPRIETARY ITEM  
EXCEPT FOR USES EXPRESSLY GRANTED  
IN WRITING, INFORMATION DISCLOSED  
HEREON IS CONFIDENTIAL AND ALL  
RIGHTS, PATENT AND OTHERWISE,  
ARE RESERVED BY SOUTHCO, INC.