

Cup

ISCUP Cup 1 80x80x16

Part no.: 10.01.15.00209

<https://www.schmalz.com/10.01.15.00209>



Homepage > Vacuum Clamping Technology > Clamping Solutions for Woodworking > Modernization of CNC Machining Centers > Innospann Steel-Plate > ISCUP Cup 1 80x80x16

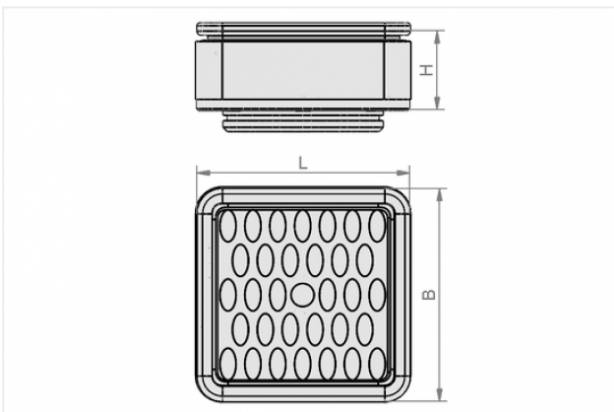
Suction cup for Innospann



Dimensions (LxB): 80 x 80 mm

Height H: 16 mm

Design Data



| Attribute | Value |
|-----------|-------|
|-----------|-------|

| | |
|---|-------|
| B | 80 mm |
|---|-------|

| | |
|---|-------|
| H | 16 mm |
|---|-------|

| | |
|---|-------|
| L | 80 mm |
|---|-------|

Technical Data

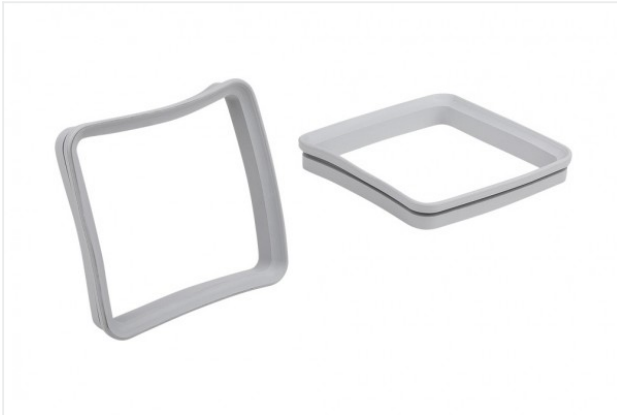
| Attribute | Value |
|-----------|-------|
|-----------|-------|

| | |
|--------|----------|
| Weight | 0.065 kg |
|--------|----------|

Contact to Schmalz

J. Schmalz GmbH | Johannes-Schmalz-Straße, 72293 Glatten, Deutschland | +49 7443 2403-102 | customercenter@schmalz.de

Spare Parts



ISDR 81x81x12 Cup 1

Part no. 10.01.15.00020

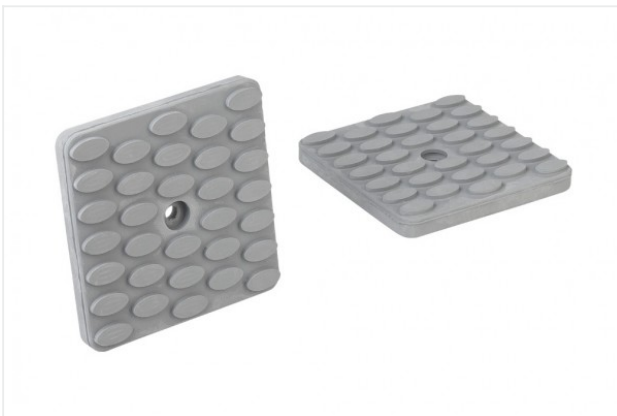
Sealing frame

Length L: 81 mm

Width B: 81 mm

Height H: 12 mm

Type: Cup 1



ISRPL 66x66x8.5

Part no. 10.01.15.00017

Friction plate

Length: 66 mm

Width: 66 mm

Height: 8.5 mm

Type: Cup 1