

Pressure-reduction valve

<https://www.schmalz.com/10.07.11.00025>



DM 0.5...10 G1/2-IG

Part no.: 10.07.11.00025

Homepage > Vacuum Technology for Automation > Vacuum Components > Switches and System Monitoring > Measuring and Control Devices >

Pressure-Reduction Valves DM > DM 0.5...10 G1/2-IG

Pressure-reduction valve



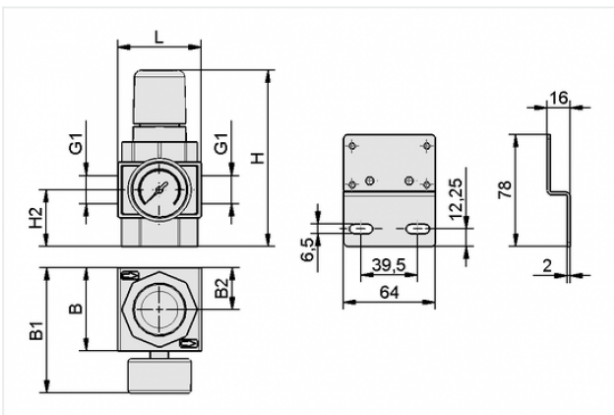
Work area: 0.5 ... 10.0 bar

Connection: G1/2-F

with: Manometer

Flow rate (max): 78 m³/h

Design Data



Attribute	Value
-----------	-------

B	64 mm
---	-------

B1	96 mm
----	-------

B2	32 mm
----	-------

G1	G1/2"-F
----	---------

H	135.5 mm
---	----------

H2	43.5 mm
----	---------

L	64 mm
---	-------

Technical Data

Attribute	Value
-----------	-------

Work area	0.5 ... 10.0 bar
-----------	------------------

Contact to Schmalz

J. Schmalz GmbH | Johannes-Schmalz-Straße, 72293 Glatten, Deutschland | +49 7443 2403-102 | customercenter@schmalz.de

Attribute	Value
Flow rate (max)	1300 l/min
Flow rate (max)	78 m ³ /h
Ambient temperature	-10 ... 60 °C
Weight	0.74 kg
