

Check valve

SVN G1/4-AG N015

Part no.: 10.05.03.00072

<https://www.schmalz.com/10.05.03.00072>



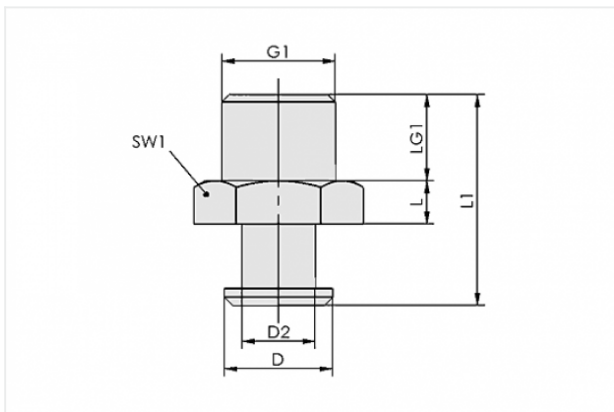
Homepage > Vacuum Technology for Automation > Vacuum Components > Valve Technology > Check Valves and Flow Restrictors > Check Valves
SVN > SVN G1/4-AG N015

Connection nipple with integrated check valve



Thread 1: G1/4-M
Spanner size: 22 mm
Nipple: N 015

Design Data



Attribute	Value
D	16.5 mm
D2	13 mm
G1	G1/4"-M
L	5 mm
L1	37.5 mm
LG1	10 mm
SW1	22 mm

Technical Data

Attribute	Value
Evacuation rate for $p_u = -0,3$ bar	2.3 m ³ /h

Contact to Schmalz

J. Schmalz GmbH | Johannes-Schmalz-Straße, 72293 Glatten, Deutschland | +49 7443 2403-102 | customercenter@schmalz.de



Attribute	Value
Evacuation rate for $p_u = -0,3$ bar	38.3 l/min
Evacuation rate for $p_u = -0,6$ bar	3.3 m ³ /h
Evacuation rate for $p_u = -0,6$ bar	55 l/min
Flow rate (max)	27 m ³ /h
Flow rate (max)	450 l/min
Weight	18 g
