

Solenoid valve

EMVP 10 24V-DC 3/2 NO/NC

<https://www.schmalz.com/10.05.02.00144>



Part no.: 10.05.02.00144

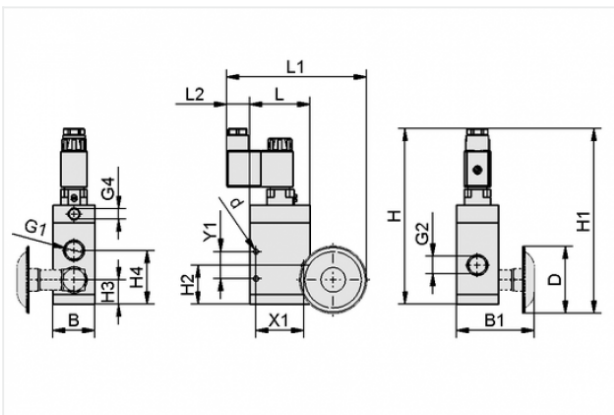
Homepage > Vacuum Technology for Automation > Vacuum Components > Valve Technology > Solenoid Valves > Solenoid Valves EMVP > EMVP 10 24V-DC 3/2 NO/NC

Solenoid valve EMVP for vacuum, pneumatic pilot control



Nominal size: 10 mm
 Voltage: 24V - DC
 Function: 3/2-way valve
 Control: Optionally NO/NC
 Connecting thread: G3/8-F

Design Data



Attribute	Value
B	35 mm
B1	67 mm
d	4.3 mm
D	56 mm
G1	G3/8"-F
G2	G3/8"-F
G4	G1/8"-F
H	147 mm
H1	154.5 mm
H2	32.8 mm
H3	20.5 mm
H4	45 mm
L	50 mm

Contact to Schmalz

J. Schmalz GmbH | Johannes-Schmalz-Straße, 72293 Glatten, Deutschland | +49 7443 2403-102 | customercenter@schmalz.de

Attribute	Value
L1	117 mm
L2	19.5 mm
X1	40 mm
Y1	22.5 mm

Technical Data

Attribute	Value
Nominal size	10 mm
Control	Optionally NO/NC
Nominal flow rate	167 l/min
Nominal flow rate	10 m ³ /h
Power consumption (DC)	5 W
Voltage	24V - DC
Closing time	22 ms
Weight	0.42 kg

Accessories



FAS 56 G1/4-AG

Part no. 10.05.01.00065

Filter with mounting kit

External diameter D: 56 mm

Thread G1: G1/4-M



STEC 4 S-M12-4 St

Part no. 10.05.02.00157

Plug

Number of pole: 4

Interface Connection 1:

Male connect M12, 4 pol

Mounting: push-in