

Solenoid valve

EMVP 10 230V-AC 3/2 NO/NC

<https://www.schmalz.com/10.05.02.00143>



Part no.: 10.05.02.00143

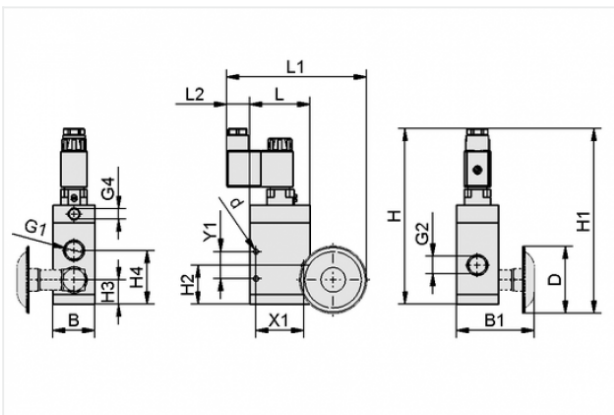
Homepage > Vacuum Technology for Automation > Vacuum Components > Valve Technology > Solenoid Valves > Solenoid Valves EMVP > EMVP 10 230V-AC 3/2 NO/NC

Solenoid valve EMVP for vacuum, pneumatic pilot control



Nominal size: 10 mm
Voltage: 230V - AC
Function: 3/2-way valve
Control: Optionally NO/NC
Connecting thread: G3/8"-F
Nominal flow rate: 10 m³/h
Weight: 0.42 kg

Design Data



Attribute	Value
B	35 mm
B1	67 mm
d	4.3 mm
D	56 mm
G1	G3/8"-F
G2	G3/8"-F
G4	G1/8"-F
H	147 mm
H1	154.5 mm
H2	32.8 mm
H3	20.5 mm
H4	45 mm
L	50 mm

Contact to Schmalz

J. Schmalz GmbH | Johannes-Schmalz-Straße, 72293 Glatten, Deutschland | +49 7443 2403-102 | customercenter@schmalz.de

Attribute	Value
L1	117 mm
L2	19.5 mm
X1	40 mm
Y1	22.5 mm

Technical Data

Attribute	Value
Nominal size	10 mm
Control	Optionally NO/NC
Nominal flow rate	167 l/min
Nominal flow rate	10 m ³ /h
Power consumption (DC)	5 W
Voltage	230V - AC
Closing time	22 ms
Weight	0.42 kg

Accessories



FAS 56 G1/4-AG

Part no. 10.05.01.00065
Filter with mounting kit
External diameter D: 56 mm
Thread G1: G1/4-M

Contact to Schmalz

