

Solenoid valve

EMV 20 230V-AC 3/2 NO

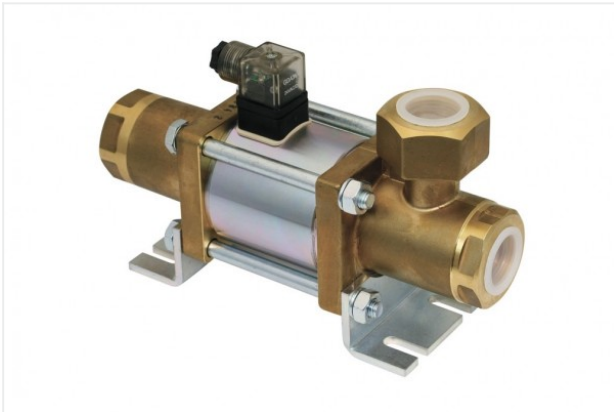
<https://www.schmalz.com/10.05.01.00075>



Part no.: 10.05.01.00075

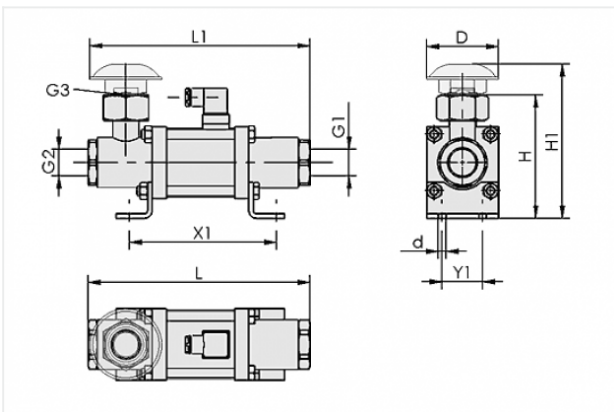
Homepage > Vacuum Technology for Automation > Vacuum Components > Valve Technology > Solenoid Valves > Solenoid Valves EMV > EMV 20 230V-AC 3/2 NO

Solenoid valve EMV for direct control of vacuum and compressed air



Nominal size: 20 mm
Voltage: 230V - AC
Function: 3/2-way valve
Control: Normally open
Connecting thread: G1-F
Power consumption (DC): 40.8 W

Design Data



Attribute	Value
-----------	-------

d	8.5 mm
---	--------

D	80 mm
---	-------

G1	G1"-F
----	-------

G2	G1"-F
----	-------

G3	G1"-F
----	-------

H	137 mm
---	--------

H1	172 mm
----	--------

L	247 mm
---	--------

L1	245 mm
----	--------

X1	148 mm
----	--------

Y1	45 mm
----	-------

Contact to Schmalz

J. Schmalz GmbH | Johannes-Schmalz-Straße, 72293 Glatten, Deutschland | +49 7443 2403-102 | customercenter@schmalz.de

Technical Data

Attribute	Value
Nominal size	20 mm
Control	Normally open
Nominal flow rate	883.3 l/min
Nominal flow rate	53 m ³ /h
Power consumption (DC)	40.8 W
Voltage	230V - AC
Closing time	100 ms
Weight	6.375 kg

Spare Parts



FAS 80x38 G1-AG EMVP

Part no. 10.05.01.00063

Filter with mounting kit

External diameter D: 80 mm

Length L: 38 mm

Thread G1: G1-M

for: Solenoid valve