

Vacuum pump EVE-TR-X 25 AC3 F

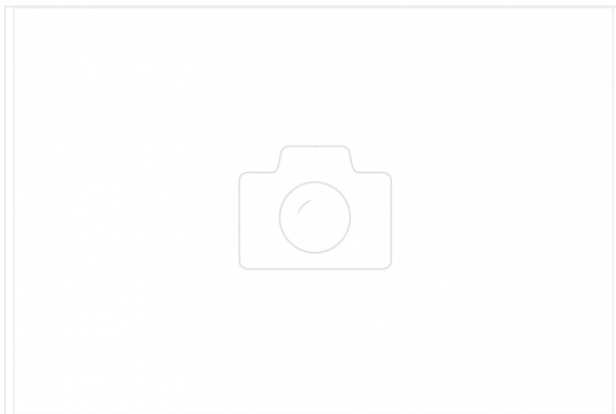
Part no.: 10.03.01.00216

<https://www.schmalz.com/10.03.01.00216>



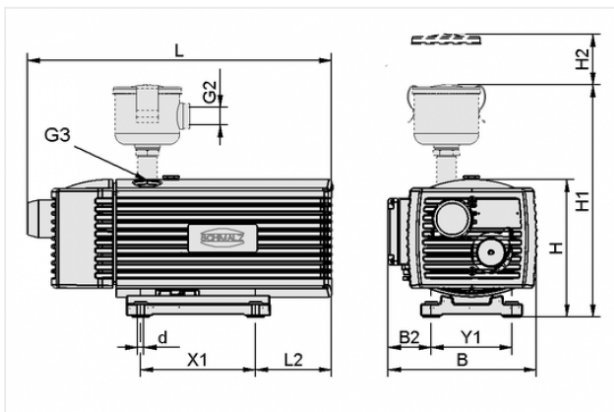
Homepage > Vacuum Technology for Automation > Vacuum Components > Vacuum Generators > Vacuum Pumps > Dry-Running Vacuum Pumps
EVE-TR X > EVE-TR-X 25 AC3 F

Oil-free pump with const. suct. rate robust, requ. little maintenance long service life, cont. operation



Current type: 3-phase AC
Noise level (50 Hz): 62 dB
Voltage (50 Hz): 175-254/300-440V AC3
Voltage (60 Hz): 190-300/330-520V AC3
with: Filter
Suction rate (50 Hz): 25 m³/h
Suction rate (60 Hz): 30 m³/h
Vacuum (50Hz): -850 mbar
Rated power (50 Hz): 0.75 kW
Rated power (60 Hz): 0.9 kW
Weight: 26.5 kg

Design Data



| Attribute | Value |
|-----------|---------|
| B | 260 mm |
| B2 | 40 mm |
| d | 7 mm |
| G2 | G3/4"-F |
| G3 | G3/4"-F |
| H | 290 mm |
| H1 | 380 mm |
| H2 | 70 mm |
| L | 505 mm |
| L2 | 96 mm |
| X1 | 220 mm |

Contact to Schmalz

J. Schmalz GmbH | Johannes-Schmalz-Straße, 72293 Glatten, Deutschland | +49 7443 2403-102 |
customercenter@schmalz.de

| Attribute | Value |
|-----------|--------|
| Y1 | 199 mm |

Technical Data

| Attribute | Value |
|----------------------|----------------------|
| Suction rate (50 Hz) | 25 m ³ /h |
| Suction rate (60 Hz) | 30 m ³ /h |
| Voltage (50 Hz) | 175-254/300-440V AC3 |
| Voltage (60 Hz) | 190-300/330-520V AC3 |
| Rated power (50 Hz) | 0.75 kW |
| Rated power (60 Hz) | 0.9 kW |
| Noise level (50 Hz) | 62 dB |
| Weight | 26.5 kg |
| Protection | IP 54 |
| Current type | AC3 |

Accessories



FILT-EINS 3 65x70 PAP STF-3/4-IG

Part no. 10.07.01.00017

Filter insert (round)

Filter pore size: 3 µm

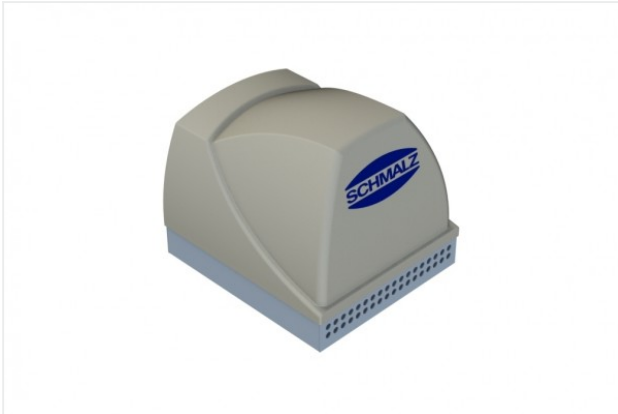
External diameter D: 65 mm

Length L: 70 mm

Filter material: Paper

for: Filters STF

Size: 3/4-IG



SBB-650x575x565-ST-VZ

Part no. 10.04.04.00117

Silencer box for reduction of the noise level

Material: Steel

Surface: galvanised

Length L: 650 mm

Width B: 575 mm

Height H: 565 mm