

# Vacuum pump EVE-TR-X 25 AC3

Part no.: 10.03.01.00215

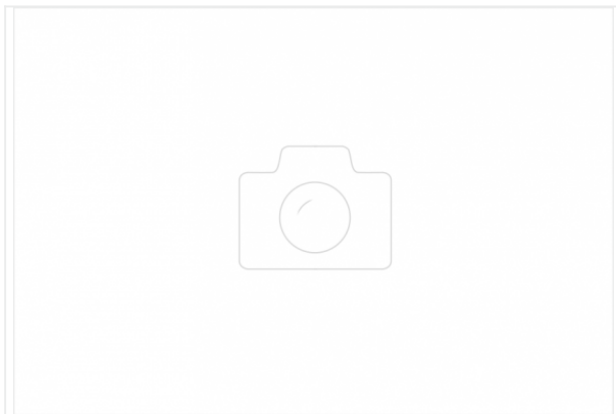
<https://www.schmalz.com/10.03.01.00215>



Homepage > Vacuum Technology for Automation > Vacuum Components > Vacuum Generators > Vacuum Pumps > Dry-Running Vacuum Pumps

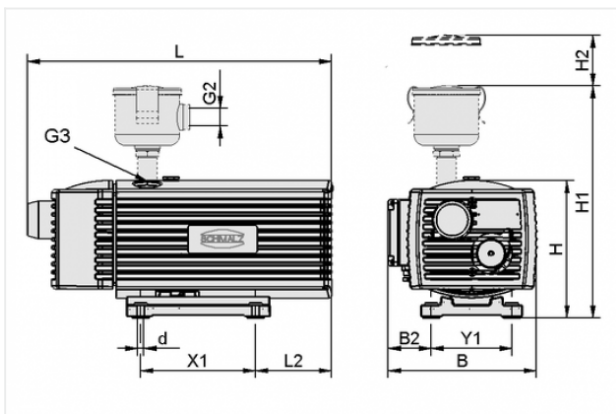
EVE-TR X > EVE-TR-X 25 AC3

## Oil-free pump with const. suct. rate robust, requ. little maintenance long service life, cont. operation



Current type: 3-phase AC  
Noise level (50 Hz): 62 dB  
Voltage (50 Hz): 175-254/300-440V AC3  
Voltage (60 Hz): 190-300/330-520V AC3  
Suction rate (50 Hz): 25 m<sup>3</sup>/h  
Suction rate (60 Hz): 30 m<sup>3</sup>/h  
Vacuum (50Hz): -850 mbar  
Rated power (50 Hz): 0.75 kW  
Rated power (60 Hz): 0.9 kW  
Weight: 26 kg

### Design Data



Attribute	Value
-----------	-------

B	260 mm
B2	40 mm
d	7 mm
G3	G3/4"-F
H	290 mm
L	505 mm
L2	96 mm
X1	220 mm
Y1	199 mm

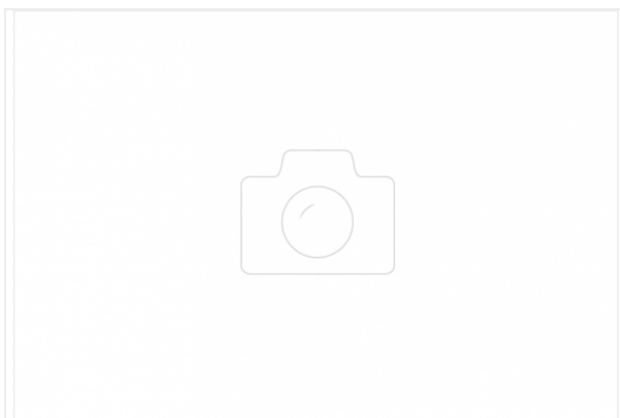
### Contact to Schmalz

J. Schmalz GmbH | Johannes-Schmalz-Straße, 72293 Glatten, Deutschland | +49 7443 2403-102 | [customercenter@schmalz.de](mailto:customercenter@schmalz.de)

## Technical Data

Attribute	Value
Suction rate (50 Hz)	25 m³/h
Suction rate (60 Hz)	30 m³/h
Voltage (50 Hz)	175-254/300-440V AC3
Voltage (60 Hz)	190-300/330-520V AC3
Rated power (50 Hz)	0.75 kW
Rated power (60 Hz)	0.9 kW
Noise level (50 Hz)	62 dB
Weight	26 kg
Protection	IP 54
Current type	AC3

## Accessories



### **VBV -950...0 G1-AG EVE 10-40**

Part no. 10.03.01.00136

Vacuum valve for limiting the maximum vacuum pressure

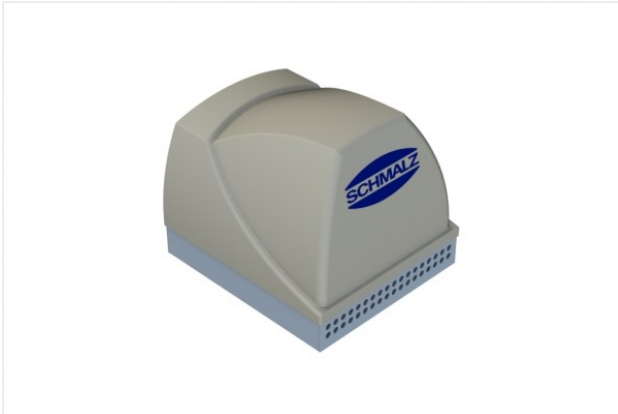
Vacuum range: -950 ... 0 mbar

Thread G1: G1"-M

Length L: 53.5 mm

for: Pump EVE

Size: 10-40



**SBB-650x575x565-ST-VZ**

Part no. 10.04.04.00117

Silencer box for reduction of the noise level

Material: Steel

Surface: galvanised

Length L: 650 mm

Width B: 575 mm

Height H: 565 mm