

# Vacuum pump EVE-TR-X 16 AC3 F

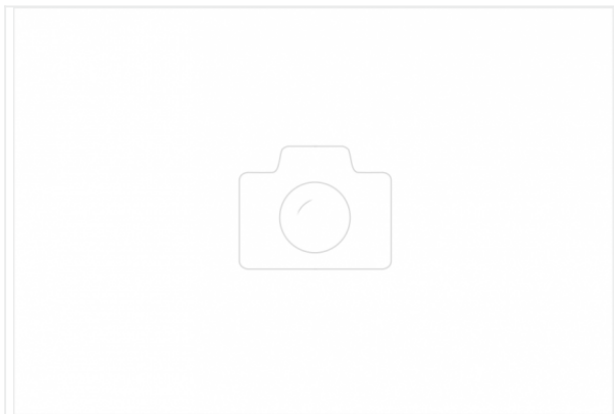
Part no.: 10.03.01.00213

<https://www.schmalz.com/10.03.01.00213>



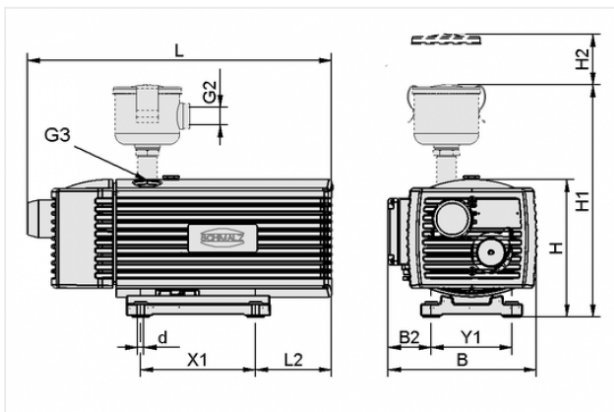
Homepage > Vacuum Technology for Automation > Vacuum Components > Vacuum Generators > Vacuum Pumps > Dry-Running Vacuum Pumps  
EVE-TR X > EVE-TR-X 16 AC3 F

## Oil-free pump with const. suct. rate robust, requ. little maintenance long service life, cont. operation



Current type: 3-phase AC  
Noise level (50 Hz): 61 dB  
Voltage (50 Hz): 175-260/300-450V AC3  
Voltage (60 Hz): 202-300/350-520V AC3  
with: Filter  
Suction rate (50 Hz): 16 m<sup>3</sup>/h  
Suction rate (60 Hz): 19 m<sup>3</sup>/h  
Vacuum (50Hz): -850 mbar  
Rated power (50 Hz): 0.55 kW  
Rated power (60 Hz): 0.7 kW  
Weight: 23 kg

### Design Data



Attribute	Value
B	231 mm
B2	66 mm
d	7 mm
G2	G3/4"-F
G3	G1/2"-F
H	205 mm
H1	345 mm
H2	70 mm
L	452 mm
L2	73 mm
X1	202 mm

### Contact to Schmalz

J. Schmalz GmbH | Johannes-Schmalz-Straße, 72293 Glatten, Deutschland | +49 7443 2403-102 |  
customercenter@schmalz.de

Attribute	Value
Y1	125 mm

## Technical Data

Attribute	Value
Suction rate (50 Hz)	16 m <sup>3</sup> /h
Suction rate (60 Hz)	19 m <sup>3</sup> /h
Voltage (50 Hz)	175-260/300-450V AC3
Voltage (60 Hz)	202-300/350-520V AC3
Rated power (50 Hz)	0.55 kW
Rated power (60 Hz)	0.7 kW
Noise level (50 Hz)	61 dB
Weight	23 kg
Protection	IP 54
Current type	AC3

## Accessories



### **FILT-EINS 3 65x70 PAP STF-3/4-IG**

Part no. 10.07.01.00017

Filter insert (round)

Filter pore size: 3 µm

External diameter D: 65 mm

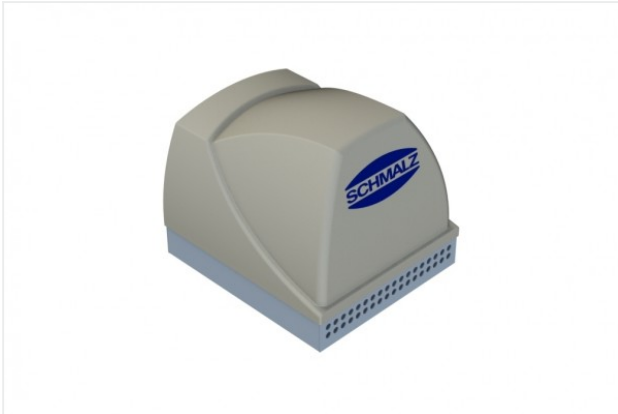
Length L: 70 mm

Filter material: Paper

for: Filters STF

Size: 3/4-IG

## Contact to Schmalz



**SBB-650x575x565-ST-VZ**

Part no. 10.04.04.00117

Silencer box for reduction of the noise level

Material: Steel

Surface: galvanised

Length L: 650 mm

Width B: 575 mm

Height H: 565 mm