

Vacuum pump EVE-TR-X 16 AC3

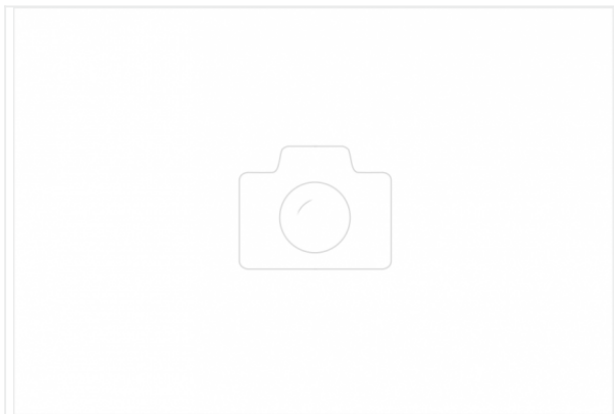
Part no.: 10.03.01.00212

<https://www.schmalz.com/10.03.01.00212>



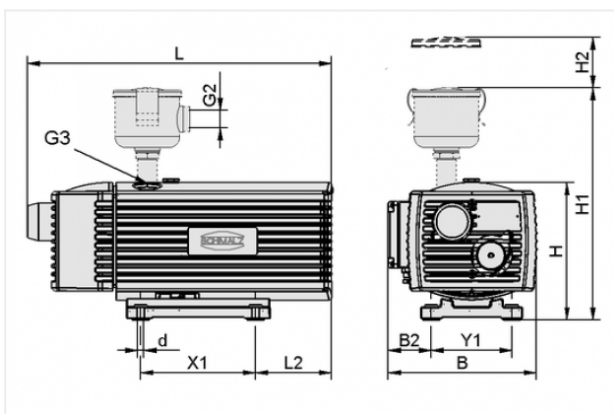
Homepage > Vacuum Technology for Automation > Vacuum Components > Vacuum Generators > Vacuum Pumps > Dry-Running Vacuum Pumps
EVE-TR X > EVE-TR-X 16 AC3

Oil-free pump with const. suct. rate robust, requ. little maintenance long service life, cont. operation



Current type: 3-phase AC
Noise level (50 Hz): 61 dB
Voltage (50 Hz): 175-260/300-450V AC3
Voltage (60 Hz): 202-300/350-520V AC3
Suction rate (50 Hz): 16 m³/h
Suction rate (60 Hz): 19 m³/h
Vacuum (50Hz): -850 mbar
Rated power (50 Hz): 0.55 kW
Rated power (60 Hz): 0.7 kW
Weight: 22.5 kg

Design Data



Attribute	Value
-----------	-------

B	231 mm
B2	66 mm
d	7 mm
G3	G1/2"-F
H	205 mm
L	452 mm
L2	73 mm
X1	202 mm
Y1	125 mm

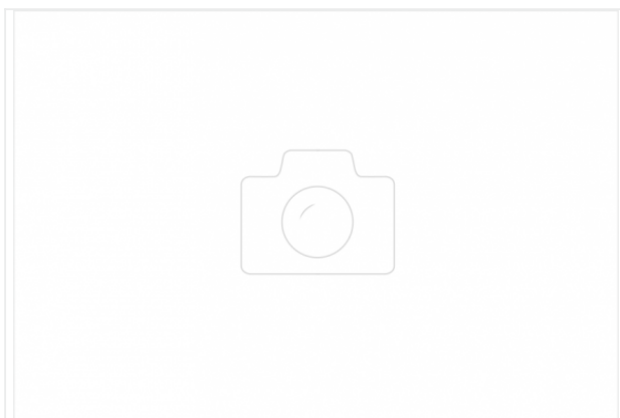
Contact to Schmalz

J. Schmalz GmbH | Johannes-Schmalz-Straße, 72293 Glatten, Deutschland | +49 7443 2403-102 | customercenter@schmalz.de

Technical Data

Attribute	Value
Suction rate (50 Hz)	16 m ³ /h
Suction rate (60 Hz)	19 m ³ /h
Voltage (50 Hz)	175-260/300-450V AC3
Voltage (60 Hz)	202-300/350-520V AC3
Rated power (50 Hz)	0.55 kW
Rated power (60 Hz)	0.7 kW
Noise level (50 Hz)	61 dB
Weight	22.5 kg
Protection	IP 54
Current type	AC3

Accessories



VBV -950...0 G1-AG EVE 10-40

Part no. 10.03.01.00136

Vacuum valve for limiting the maximum vacuum pressure

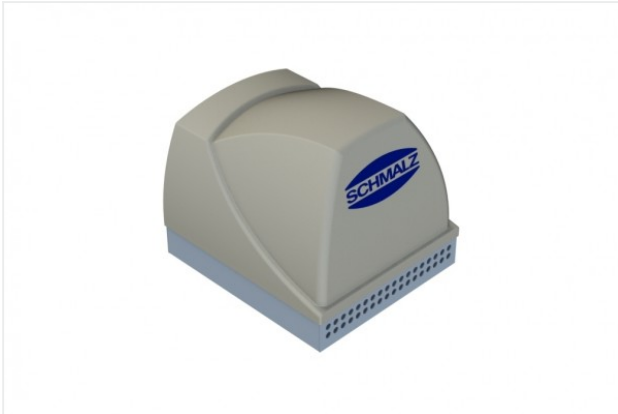
Vacuum range: -950 ... 0 mbar

Thread G1: G1"-M

Length L: 53.5 mm

for: Pump EVE

Size: 10-40



SBB-650x575x565-ST-VZ

Part no. 10.04.04.00117

Silencer box for reduction of the noise level

Material: Steel

Surface: galvanised

Length L: 650 mm

Width B: 575 mm

Height H: 565 mm