

# Compact ejector

## SMP 20 NC AS RD

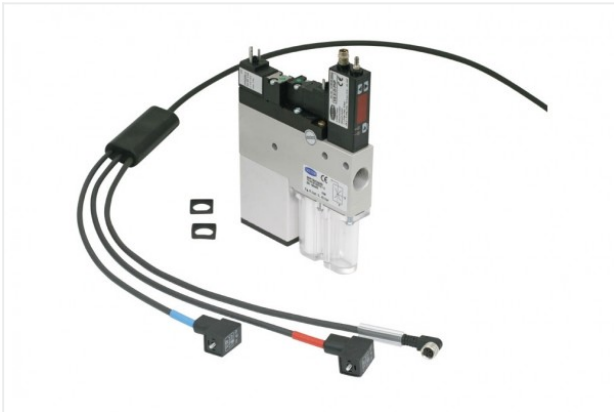
<https://www.schmalz.com/10.02.02.00775>



Part no.: 10.02.02.00775

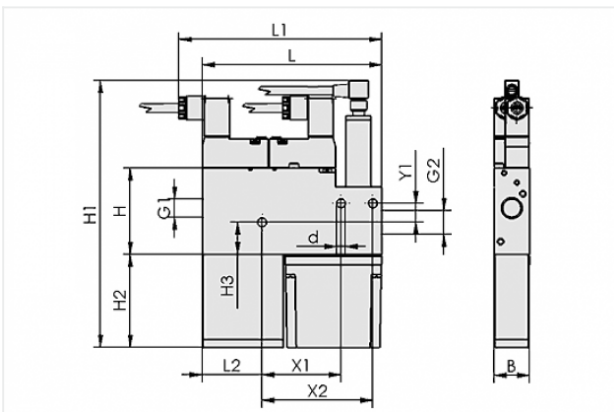
Homepage > Vacuum Technology for Automation > Vacuum Components > Vacuum Generators > Compact Ejectors > Compact Ejectors SCP / SMP > SMP 20 NC AS RD

### Compact ejector MEGA PUMP with power blow-off function



Nozzle size: 2,0 mm  
 Suction rate (max): 116 l/min  
 Air consumption (during evac.):  
 190 l/min  
 Control: Normally closed  
 Shape: With blow-off system  
 with: digital air-saving function

### Design Data



Attribute	Value
B	22 mm
d	5.5 mm
G1	G1/4"-F
G2	G3/8"-F
H	54 mm
H1	181.5 mm
H2	58.5 mm
H3	20.1 mm
L	112.5 mm
L1	129 mm
L2	37.5 mm
X1	49.5 mm
X2	69.5 mm

### Contact to Schmalz

J. Schmalz GmbH | Johannes-Schmalz-Straße, 72293 Glatten, Deutschland | +49 7443 2403-102 | [customercenter@schmalz.de](mailto:customercenter@schmalz.de)

Attribute	Value
Y1	12 mm

## Technical Data

Attribute	Value
Nozzle diameter	2 mm
Degree of evacuation	85 %
Suction rate (max)	116 l/min
Suction rate (max)	7 m <sup>3</sup> /h
Air consumption (during evac.)	190 l/min
Air consumption (during evac.)	11.4 m <sup>3</sup> /h
Air consumption (blow off) (max)	220 l/min
Noise level (workp. gripped)	76 dB
Noise level (free)	78 dB
Pressure range (operating pressure)	5.0 ... 6.0 bar
Int. hose diameter (recom.) comp.-air	4 mm
Int. hose diameter (recom.) vacuum side	9 mm
Ambient temperature	0 ... 45 °C
Control	Normally closed
Pressure range (operating pressure)	72.5 ... 87.0 psi
Suction rate (max)	4.096 cfm
Air consumption (during evac.)	6.709 cfm
Air consumption (blow off)	7.769 cfm
Product family	SMP

### Note:

- The supply voltage for vacuum switches and solenoid valves is 24V DC
- Air consumption: At optimal operating pressure

### Contact to Schmalz

- Hose diameter: For max. length 2 m

---

## Spare Parts



### **SD 50.5x21x53.5 SMP15/20**

Part no. 10.02.02.00651

Silencer for vacuum generators

Length L: 50.5 mm

Width B: 21 mm

Height H: 53.5 mm

for: Compact ejectors SMP



### **FILT-EINS 14x49 PE-POR SCP-SMP**

Part no. 10.02.02.00654

Filter insert (round)

External diameter D: 14 mm

Length L: 49 mm

Filter material: Polyethylene

for: Compact ejectors