

For your safety, please read the following before using.

- ① Do not use corrosive or flammable gas or liquid with this product.
- ② Please use within the rated pressure range. Do not apply pressure beyond recommended maximum withstand pressure, permanent damage to the pressure gage may occur.
- ③ Do not drop, hit or allow excessive shock. Even if pressure gage body appears undamaged, internal components may be broken and can cause malfunction.
- ④ Do not use in environment containing steam or oil vapor.
- ⑤ This product is not explosion-proof rated. Do not use in atmosphere containing flammable or explosive gases.
- ⑥ Using filter can extend pressure gage's service life.

A. SPECIFICATIONS

| TYPE | | VAM-D 30X30 P |
|----------------------------|------------------------|--|
| Rated pressure range | | 0.000 ~ 1.000MPa |
| Display pressure range | | -0.100 ~ 1.000MPa |
| Withstand pressure | | 1.5MPa |
| Applicable fluid | | Filtered air, incombustible and non-corrosive gases |
| Pressure resolution | MPa | 0.001 |
| | kgf/cm ² | 0.01 |
| | bar | 0.01 |
| | psi | 0.1 |
| Battery | | CR 2032 Lithium |
| Back light | | Yes |
| Battery life | | 1 year (5 times/day) |
| Low-power indicator | | Yes |
| Battery replaceable | | Yes |
| Turn-on interval | | Display turn off after 60 sec. |
| Sampling rate | | 2 Hz (2 times/sec.) |
| Pressure unit | | psi, bar, kgf/cm ² and Mpa user selectable |
| Repeatability | | ≤ ±0.2% F.S. ±1digit |
| LCD display | | 3 ½ digit, 7 segment |
| Indicator accuracy | | ≤ ±2% F.S. ±1 digit (ambient temperature: 25 ±3 °C) |
| Environment | Enclosure | IP65* |
| | Ambient temp. range | Operation: 0 ~ 50 °C, storage: -10 ~ 60 °C (No condensation or freezing) |
| | Ambient humidity range | Operation/Storage: 35 ~ 85% RH (No condensation) |
| | Vibration | Total amplitude 1.5mm or 10G, 10Hz-55Hz-10Hz scan for 1 minute, two hours each direction of X, Y and Z |
| | Shock | 100m/s ² (10G), 3 times each in direction of X, Y and Z |
| Temperature characteristic | | ≤ ±2% F.S. of detected pressure (25°C) at temp. range of 0~50°C |
| Port size | | G1/8", M5 |
| Weight | | Approx. 40g |

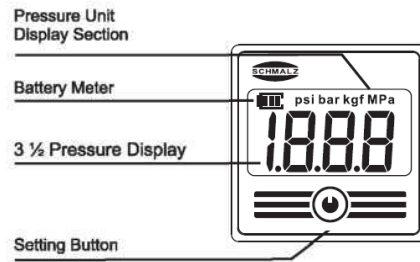
* Air tube must be installed to maintain IP65. (See section K)

B. ORDERING INFORMATION

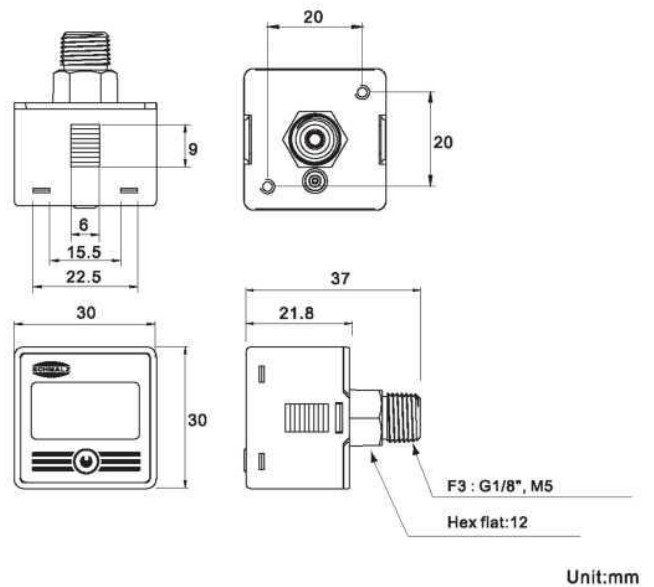
VAM-D 30x30 P G1/8"

10.07.02.00055

C. PANEL DESCRIPTION



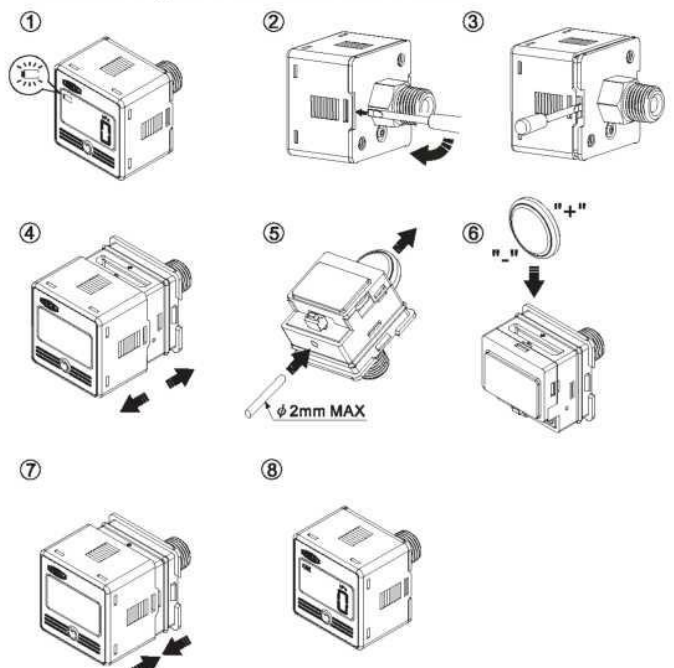
D. DIMENSIONS



E. BATTERY STATUS / INSTALLATION

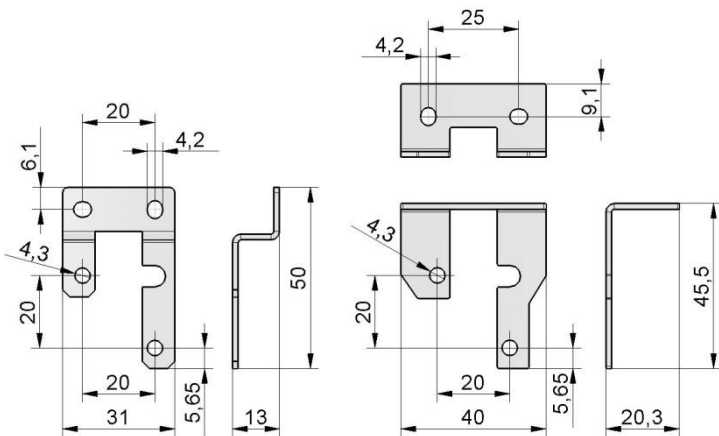
FOLLOW THE STEPS BELOW

- Using a flat screwdriver size 1.4 ~ 3.0 mm insert into the back of the pressure switch as pictured. (See figure ②)
- Turn the screwdriver horizontally 90° to separate the case and the base. Repeat this process again for the other side. (See figure ③)
- Carefully remove the outer cover (See figure ④), and follow the diagrams below to replace battery and reassembly. Polarity must be observed, incorrect battery installation will cause malfunction.



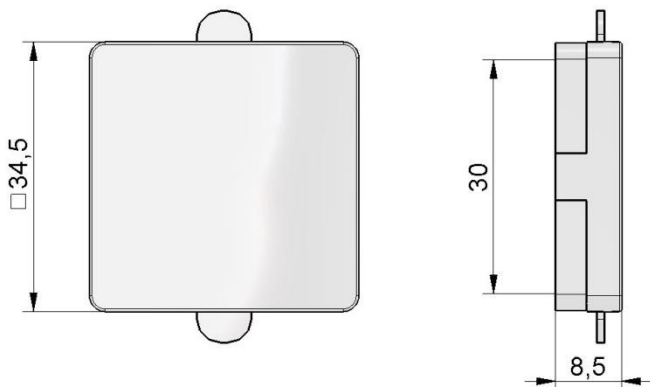
F. OPTIONAL PARTS DIMENSIONS

① Mounting bracket



Part-No. 10.06.02.00425

② Panel mount



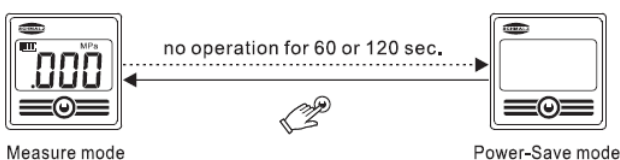
Part-No. 10.06.02.00427

G. PRESSURE UNIT CONVERSION TABLE

| From \ To | MPa | kgf/cm ² | psi | bar |
|-----------------------|-----------|---------------------|---------|----------|
| 1 MPa | 1 | 10.197 | 145.038 | 10 |
| 1 kgf/cm ² | 0.0980665 | 1 | 14.2233 | 0.980665 |
| 1 psi | 0.006895 | 0.07031 | 1 | 0.06895 |
| 1 bar | 0.100000 | 1.01972 | 14.5038 | 1 |

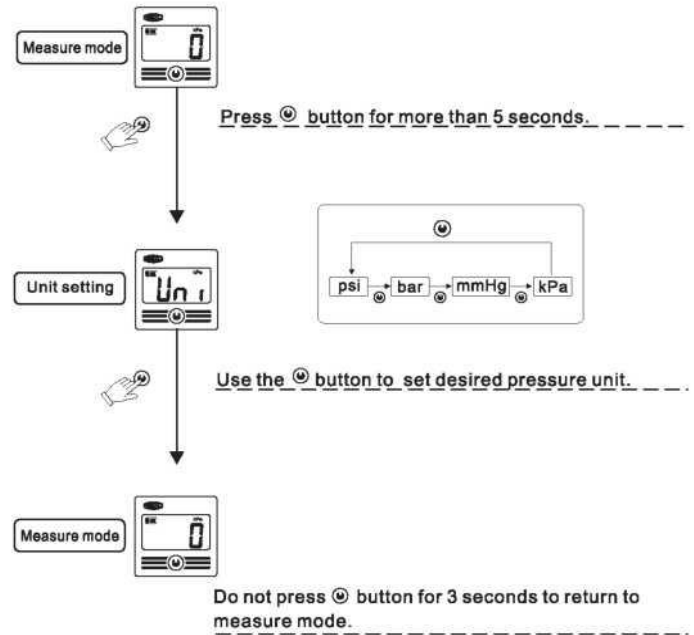
H. POWER-SAVE MODE

- ⊙ The pressure gage will enter power saving mode if the ⊙ button is not pressed within 60 sec.
- ⊙ In measure mode, press the ⊙ button to extend display for 120 sec.

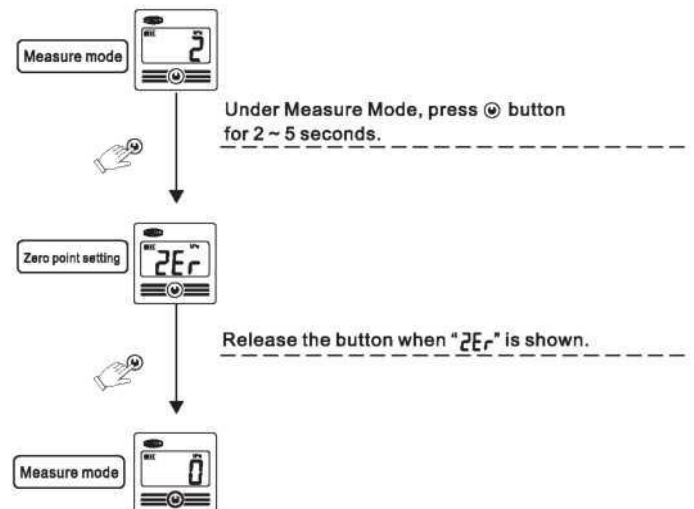


www.schmalz.com

I. PRESSURE UNIT SETTING MODE

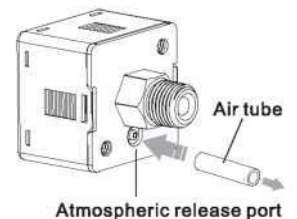


J. ZERO POINT RESET



K. DUST AND SPLASH ENVIRONMENT

- To maintain IP65, please insert an air tube (O.D.: 4mm) into atmospheric release port and pipe the other end away from dust / spattering liquid environment.
- Use proper air tube dimension of O.D.: 4mm, I.D.: 2.5mm, and the length is depending on the user's environment.



L. ERROR CODE INSTRUCTION

| Error Type | Error code | Error Condition | Troubleshooting |
|-------------------------|------------|--|---|
| Residual pressure error | Err | During zero reset, ambient pressure is over ±3% F.S. | Change input pressure to ambient pressure and perform zero reset again. |
| Applied pressure error | HHH | Supply pressure is exceeds the upper limit of pressure setting. | Adjust the pressure within operating pressure range. |
| | LLL | Supply pressure is exceeds the lower limit of pressure setting. | |
| Battery error | bAt | When battery level is under 2.40V, the battery symbol and bAt will flash 4 times then enter power save mode. | Replace battery. |