

# Floating suction cup

## SBS 30 HF M5-IG

Part no.: 10.01.01.12651

<https://www.schmalz.com/10.01.01.12651>



Homepage > Vacuum Technology for Automation > Vacuum Components > Special Grippers > Floating Suction Cups > Floating Suction Cups SBS

> SBS 30 HF M5-IG

### Floating suction cup for handling sensitive workpieces

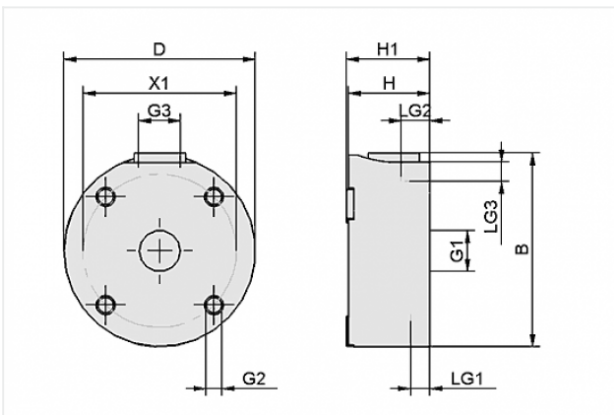


Diameter: 30 mm

Shape: High Flow

Compressed-air connection: M5-F

### Design Data



Attribute	Value
-----------	-------

B	32 mm
---	-------

D	30 mm
---	-------

G1	M5-F
----	------

G2	M4-F
----	------

G3	M5-F
----	------

H	17 mm
---	-------

H1	17.5 mm
----	---------

LG1	5 mm
-----	------

LG2	6 mm
-----	------

LG3	6 mm
-----	------

X1	22 mm
----	-------

### Contact to Schmalz

J. Schmalz GmbH | Johannes-Schmalz-Straße, 72293 Glatten, Deutschland | +49 7443 2403-102 | [customercenter@schmalz.de](mailto:customercenter@schmalz.de)

## Technical Data

Attribute	Value
Holding force	5 N
Air consumption	8.4 m <sup>3</sup> /h
Air consumption	140 l/min
Pressure range (operating pressure)	1.0 ... 6.0 bar
Weight	30.5 g

### Note:

- Air consumption: The values provided are based on an operating pressure of 5 bar, measured on a suction-tight workpiece. The actual values may differ depending on the properties of the workpiece.

## Spare Parts



### REIB-FL SBS HT1-60

Part no. 10.01.01.12585

Friction Surface to increase lateral forces  
for: Floating suction cup

Suction cup material:

High temp material HT1

Material hardness: 60 °Sh