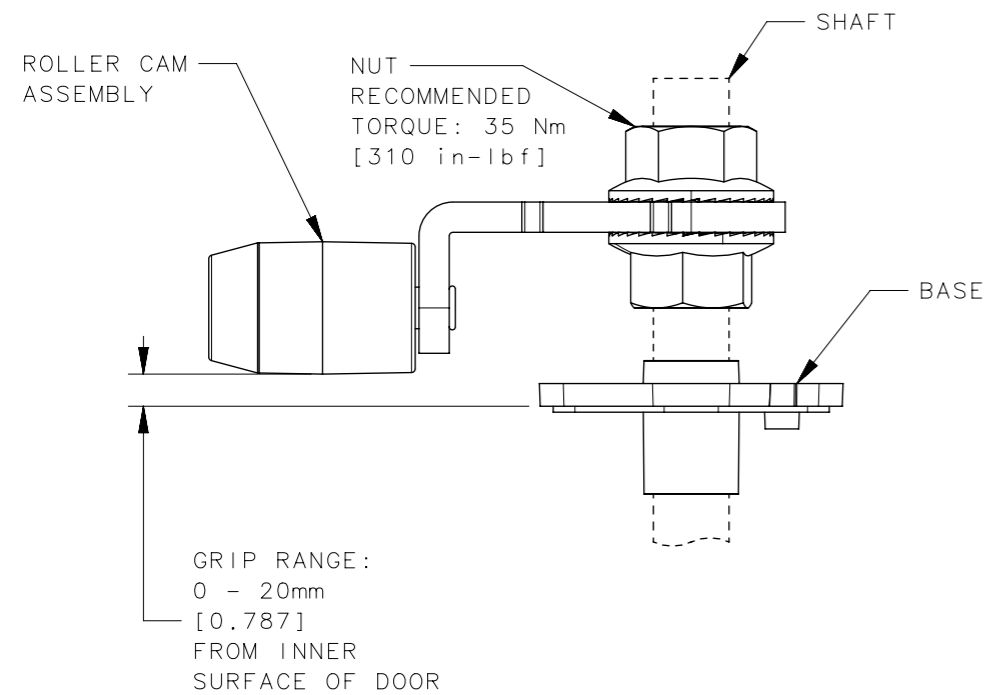
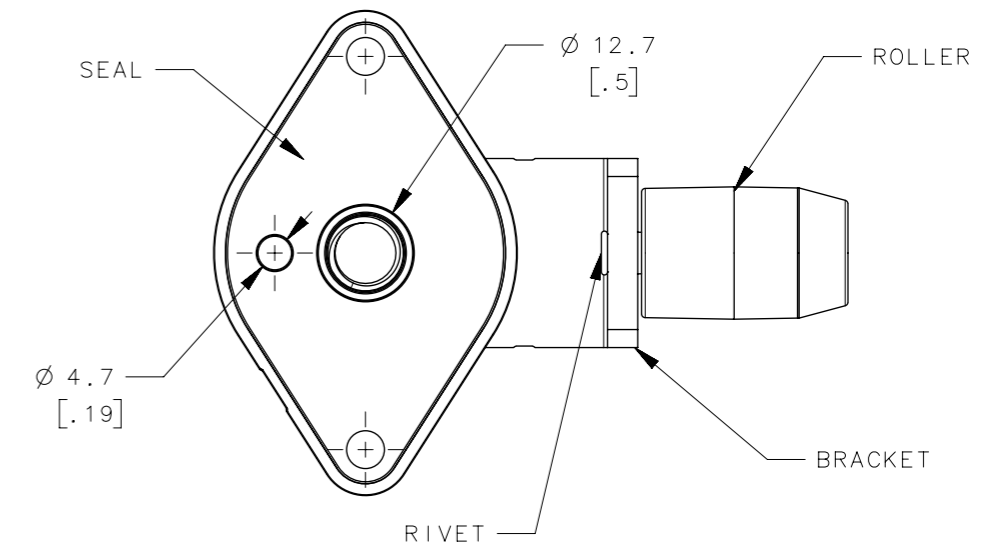
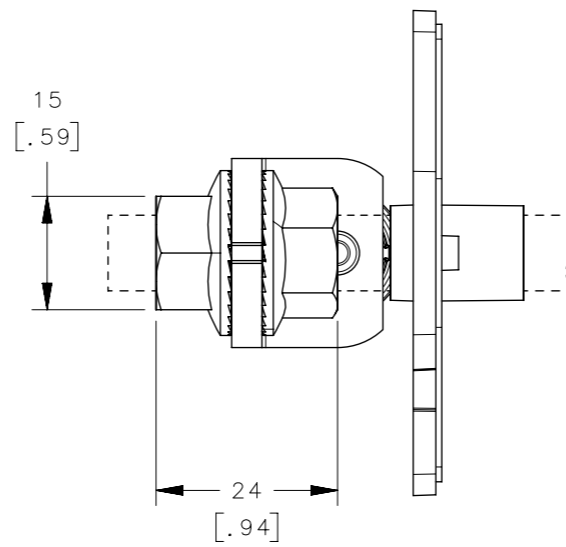
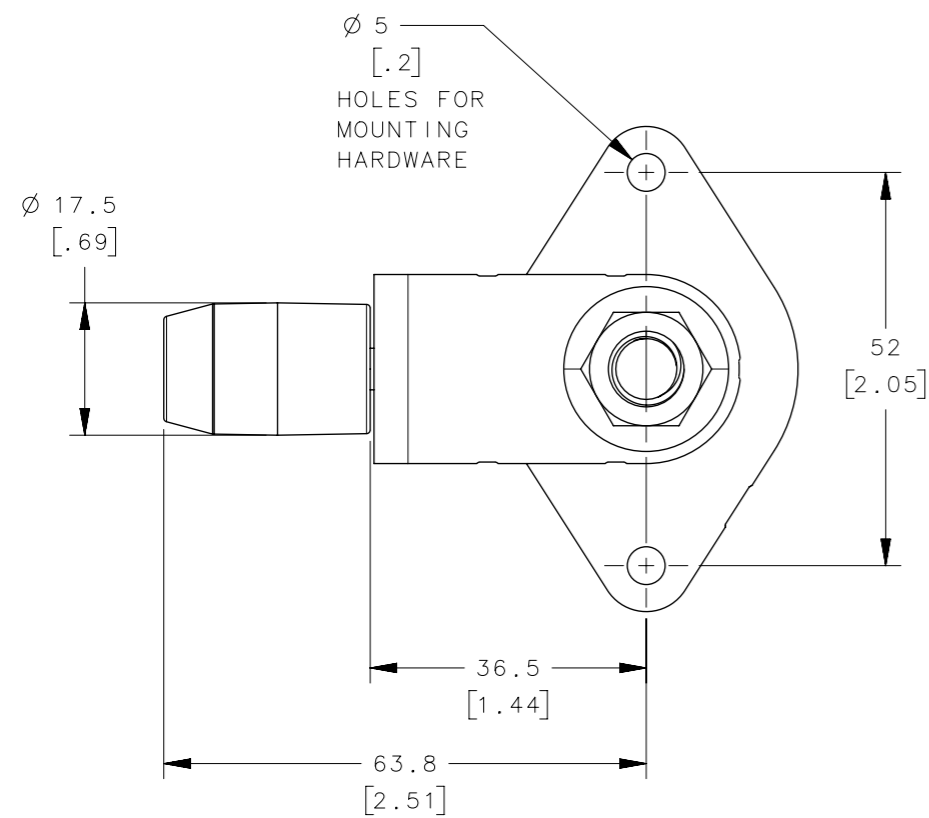


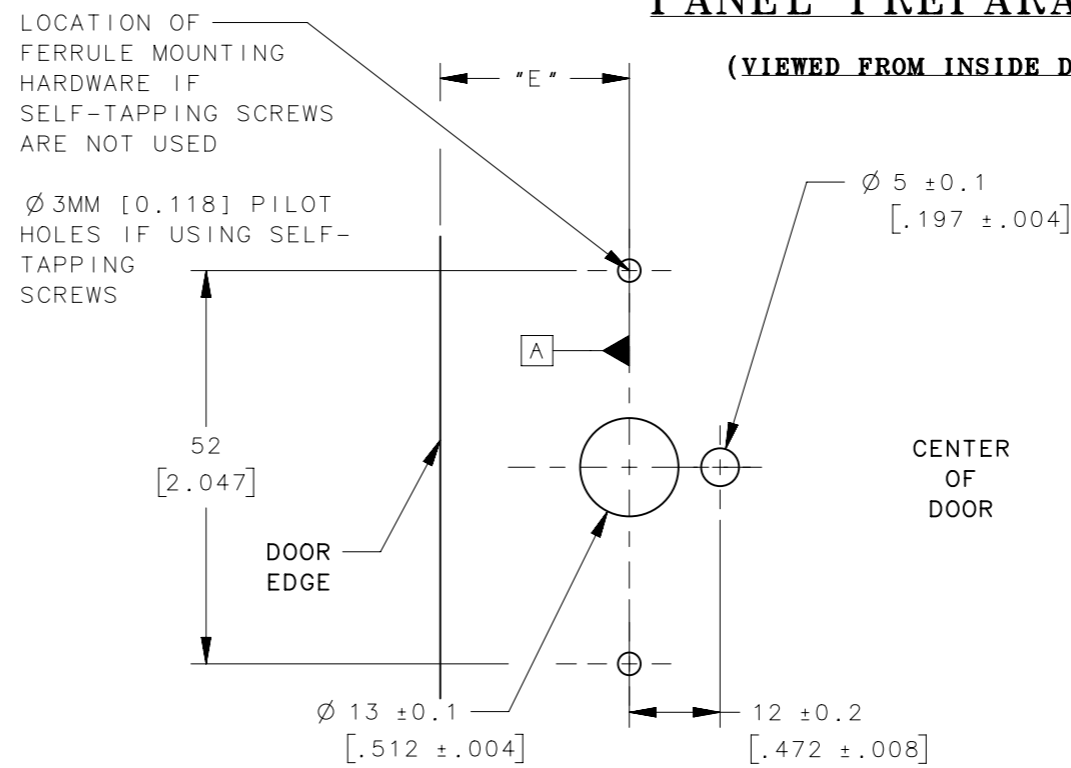
SINGLE POINT CONFIGURATION

REVISION HISTORY			
REV	DATE	BY	DESCRIPTION
B	29MAY2024	AJD/CMS	PRN: P2024-0812



PANEL PREPARATION

(VIEWED FROM INSIDE DOOR)



- PANEL PREP NOTES:
- DISTANCE "E" FROM PANEL PREP TO EDGE OF DOOR IS BASED ON FRAME LOCATION; SEE J-M4-1
 - ATTACH BASE TO DOOR USING M4 OR #8 HARDWARE
 - SEALING WASHERS UNDER SCREW HEADS (NOT SUPPLIED) REQUIRED FOR MAXIMUM SEALING
 - IF USING SELF-TAPPING SCREWS:
 - SHEET METAL THICKNESS: 0.6 - 2mm [0.024 - 0.079]
 - MAX SCREW (T20 TORX® RECESS) TORQUE: 1.0 Nm [8.85 in-lbf]
 - MIRROR 5mm HOLE ABOUT DATUM A IF DOOR EDGE IS TO RIGHT OF PANEL PREP

GENERAL NOTES:

- MATERIALS & FINISHES:
 - BASE & ROLLER - GLASS FILLED NYLON, BLACK
 - NUTS, BRACKET, & RIVET - LOW CARBON STEEL, ZINC PLATE
 - GASKET - EPDM, BLACK
- ASSEMBLY CONSISTS OF BASE, NUTS, & CAM LATCH SUB-ASSY; PACKAGED UNASSEMBLED
- ATTACH BASE TO INNER SURFACE OF DOOR PER PANEL PREPARATION INSTRUCTIONS
- INSTALL CAM LATCH ON HANDLE SHAFT & ADJUST POSITION WITH HEX NUTS
- USE WITH M4-10-1XX-20 HANDLE & M4-20-1XXX-20 HANDLE SHAFT (SEE J-M4-10-1 & J-M4-20-1)
- SEE J-M4-1 FOR SYSTEM LEVEL DETAILS
- RoHS COMPLIANT
- TORX® IS A REGISTERED TRADEMARK OF ACUMENT INTELLECTUAL PROPERTIES LLC

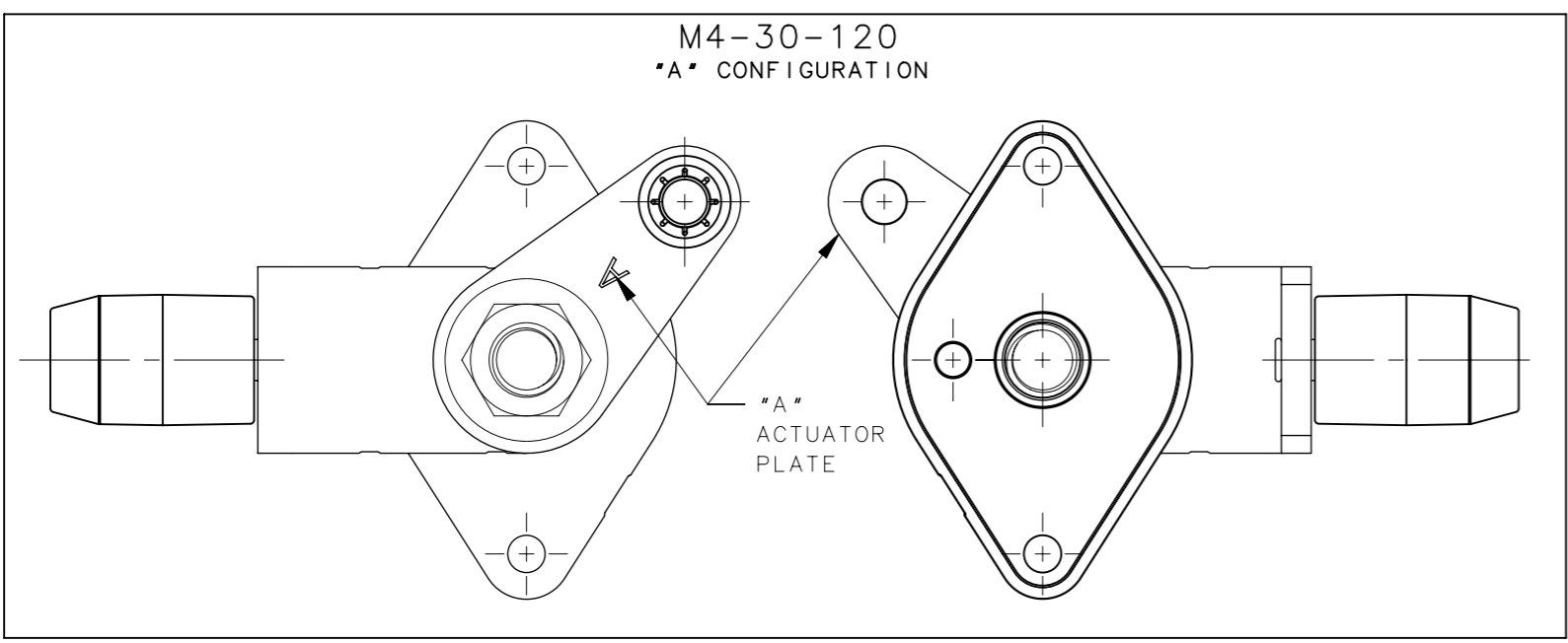
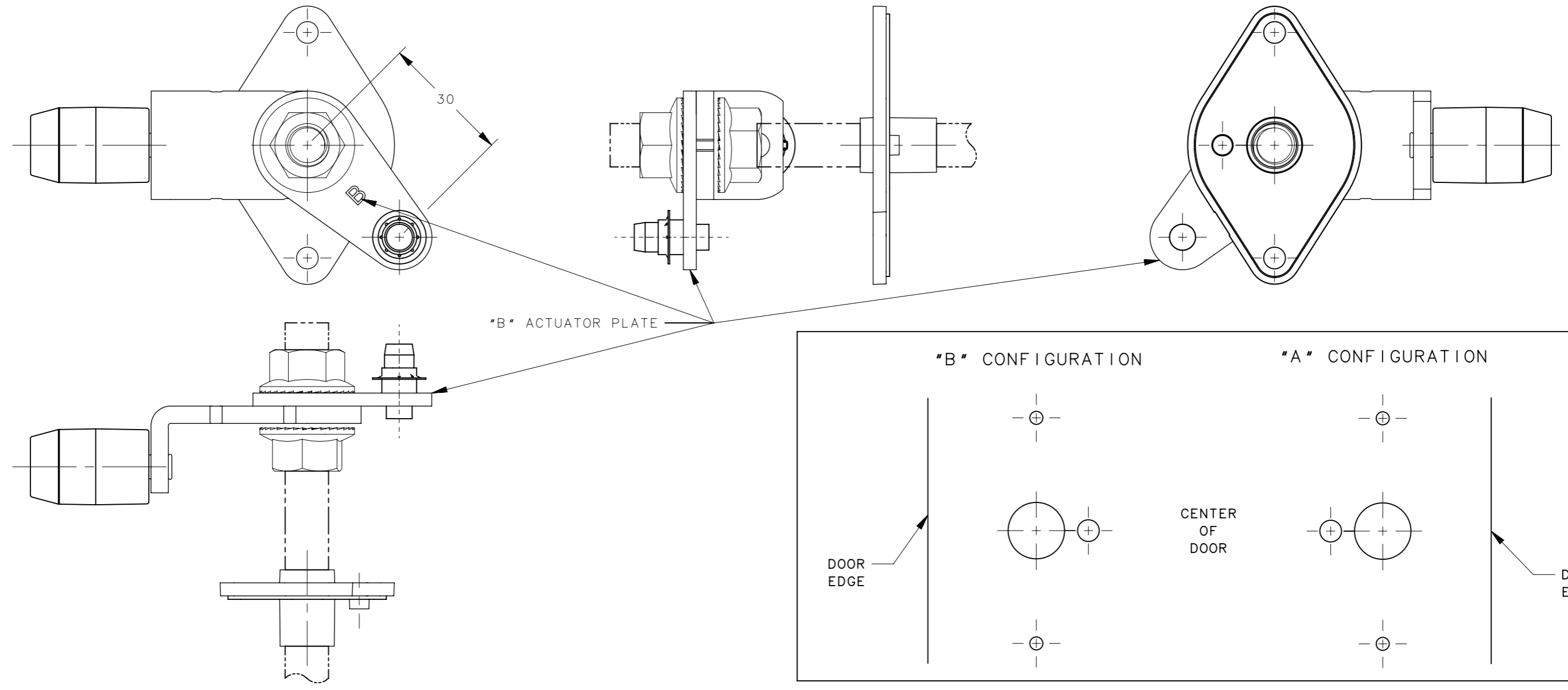
CPB NUMBER	2019-0721
THIRD ANGLE PROJECTION	
MILLIMETERS [IN]	
TOLERANCES UNLESS OTHERWISE NOTED	
ALL DIMENSIONS WITHOUT TOLERANCES ARE FOR REFERENCE ONLY.	
PER ASME Y14.5M-2009	

PROPRIETARY ITEM	EXCEPT FOR USES EXPRESSLY GRANTED IN WRITING, INFORMATION DISCLOSED HEREON IS CONFIDENTIAL AND ALL RIGHTS, PATENT AND OTHERWISE, ARE RESERVED BY SOUTHCO, INC.
------------------	--

M4-30-100			
ASSEMBLY PART NUMBER			
southco CONNECT · CREATE · INNOVATE			
DESCRIPTION		CAM LATCH	
SIZE	SYSTEM	DWG NO.	J-M4-30-1
A3	NX		
DRAWN BY	DATE	SCALE	SHEET
AJD	04JAN2024	1:1	1 OF 2

REVISION HISTORY			
REV	DATE	BY	DESCRIPTION
B	29MAY2024	AJD/CMS	PRN: P2024-0812

MULTIPOINT CONFIGURATIONS
 SAME AS SINGLE POINT EXCEPT WHERE NOTED
 M4-30-130 SHOWN
 ("B" CONFIGURATION)



ADDITIONAL MULTIPOINT NOTES:
 A. MATERIALS & FINISHES: ACTUATOR PLATE - LOW CARBON STEEL, ZINC PLATE
 B. USE WITH M4-10-1XX-20 HANDLE & M4-20-1XXX-20 HANDLE SHAFT AT DRIVING LATCH POINT
 C. USE WITH M4-10-3XX-20 REMOTE SHAFT COVER & M4-20-3XXX-20 REMOTE SHAFT AT REMOTE LATCH POINT(S)

M4-30-130	CONFIG. "B" (DOOR EDGE ON LEFT/HINGES ON RIGHT)
M4-30-120	CONFIG. "A" (DOOR EDGE ON RIGHT/HINGES ON LEFT)
ASSEMBLY PART NUMBER DESCRIPTION	
CPB NUMBER 2019-0721	THIRD ANGLE PROJECTION
MILLIMETERS [IN]	
TOLERANCES UNLESS OTHERWISE NOTED	
ALL DIMENSIONS WITHOUT TOLERANCES ARE FOR REFERENCE ONLY.	
PROPRIETARY ITEM <small>EXCEPT FOR USES EXPRESSLY GRANTED IN WRITING, INFORMATION DISCLOSED HEREON IS CONFIDENTIAL AND ALL RIGHTS, PATENT AND OTHERWISE, ARE RESERVED BY SOUTHCO, INC.</small>	DESCRIPTION southco CONNECT · CREATE · INNOVATE MULTIPOINT CAM LATCH
SIZE A3	SYSTEM NX
DWG NO. J-M4-30-1	SCALE 1:1
PER ASME Y14.5M-2009	DRAWN BY AJD
DATE 04JAN2024	SHEET 2 OF 2