

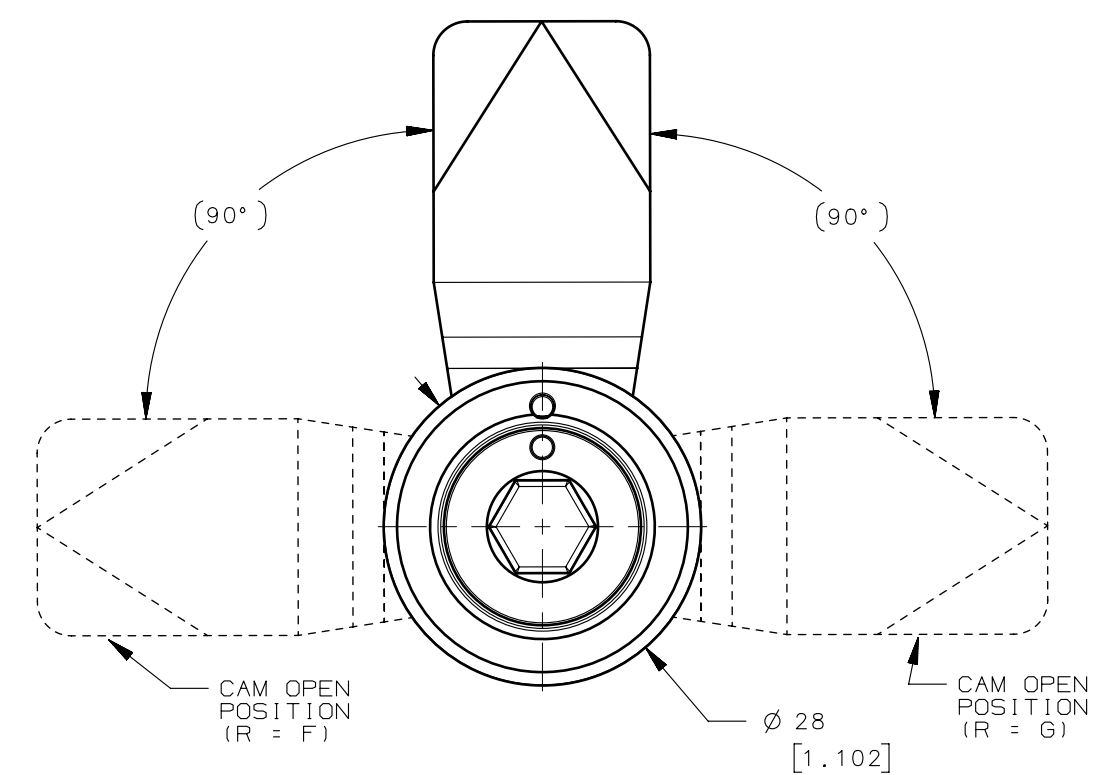
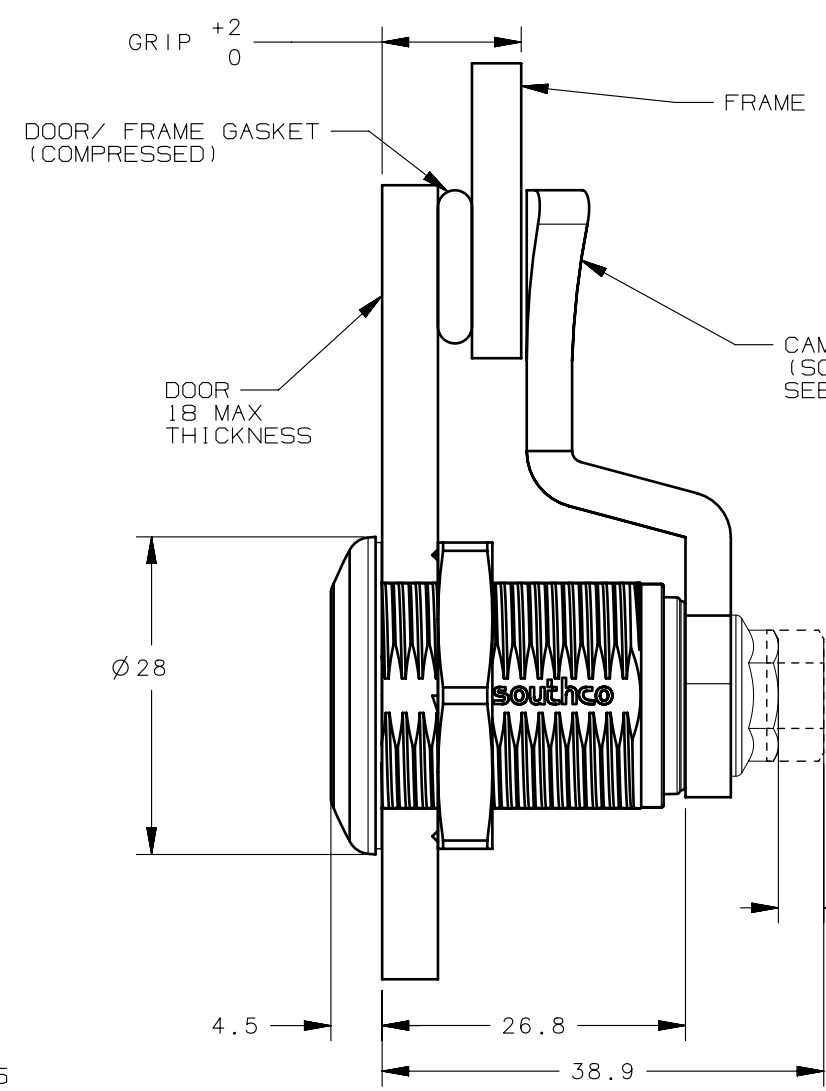
REVISION HISTORY			
REV	DATE	BY	DESCRIPTION
C	19AUG2024	IR/DMS	PRN: P2024-1328

STANDARD PART NUMBER

E9-A0 **HH** **R** - **0** **M**

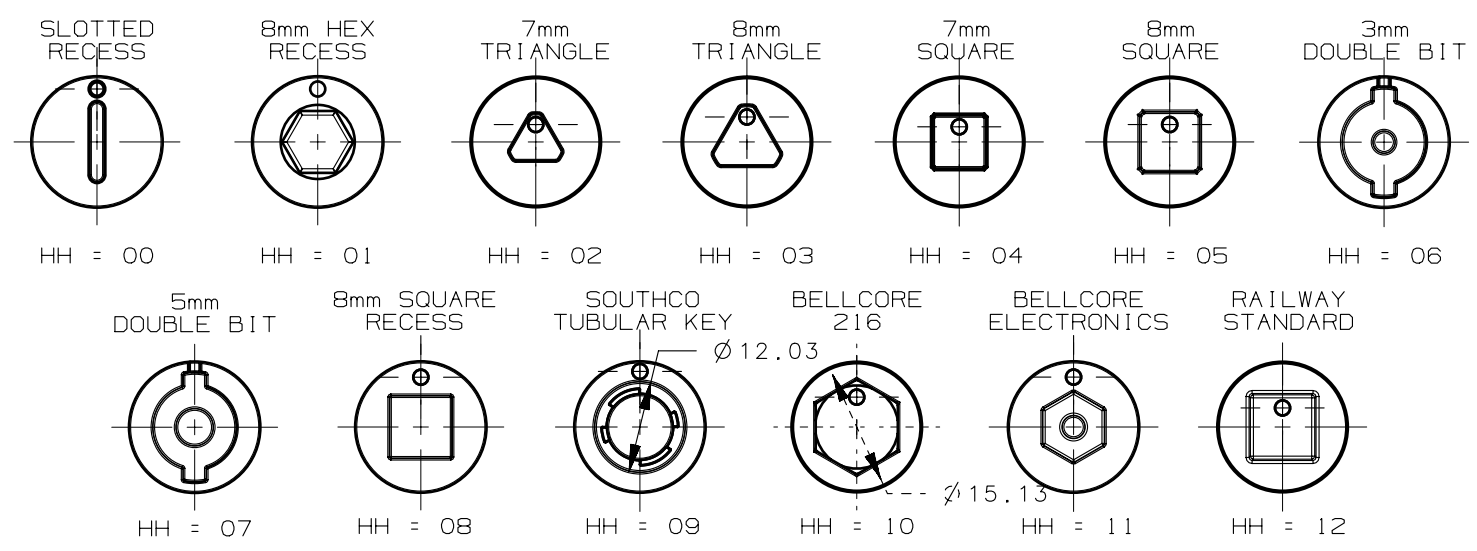
HEAD STYLE  
ROTATION TO LATCH  
FINISH

R = ROTATION TO LATCH  
F = 90° CLOCKWISE TO LATCH  
G = 90° COUNTER CLOCKWISE TO LATCH  
M = FINISH  
1 - BLACK POWDER COAT  
2 - SILVER POWDER COAT  
3 - CHROME PLATING



**HH** = HEAD STYLE

MAXIMUM RECOMMENDED KEY OUTER DIAMETER FOR HH= 02, 03, 04, 05, 12 = Ø 16.5



CUSTOMER SERVICE: REFER TO MANUFACTURING DRAWING FOR ADDITIONAL PART NUMBER CONFIGURATIONS

NO.	QTY	TYPE OF COMPONENT	MATERIAL	FINISH
10	1	O-RING	BUNA - N	NATURAL
9	1	SPRING	STAINLESS STEEL	PASSIVATION
8	1	SEAL	THERMOPLASTIC ELASTOMER	NATURAL
7	1	DRIVER	DIE CAST ZINC	POWDER COATED/ CHROME PLATED
6	1	HOUSING	DIE CAST ZINC	POWDER COATED/ CHROME PLATED
5	1	CAM	STEEL	ZINC PLATE PLUS SEALER
4	1	GASKET	NITRILE RUBBER	NATURAL
3	1	NUT	DIE CAST ZINC	ZINC PLATE PLUS SEALER
2	1	PIN	STEEL	ZINC PLATE PLUS SEALER
1	1	SCREW	STEEL	ZINC PLATE PLUS SEALER

- NOTES:
- OPERATION: 90° TURN OF DRIVER CAUSES CAM TO ROTATE 90° AND PULL UP AS SHOWN.
  - DETERMINE TOTAL GRIP USING THE FOLLOWING FORMULA:  
OUTER DOOR THICKNESS + FRAME THICKNESS + COMPRESSED DOOR GASKET THICKNESS  
SEE SHEET 3 FOR CAM PART NUMBER AND RELATED TOTAL GRIP VALUES.
  - GASKET COMPRESSION OF GREATER THAN PULL-UP DISTANCE PROVIDED BY LATCH ASSEMBLY MAY RESULT IN BLOCKED CAM MOTION OR MIS-LATCHED CONDITION.
  - INSTALLATION:  
A. INSERT LATCH INTO HOLE IN DOOR, IN THE UNLATCHED POSITION, CHECK FOR PROPER SHAFT ORIENTATION AND OPERATION.  
B. INSTALL MOUNTING NUT (M22). RECOMMENDED MAXIMUM INSTALLATION TORQUE: 20Nm.  
C. INSTALL CAM ONTO END OF SHAFT, DRIVE SCREW TO SECURE. RECOMMENDED MAXIMUM INTALLATION TORQUE: 5Nm.

CPB NUMBER 2019-1284

THIRD ANGLE PROJECTION

MILLIMETERS [IN]

TOLERANCES UNLESS OTHERWISE NOTED

DESCRIPTION E9 COMPRESSION LATCH  
ZINC - FIXED GRIP - TOOL OPERATION

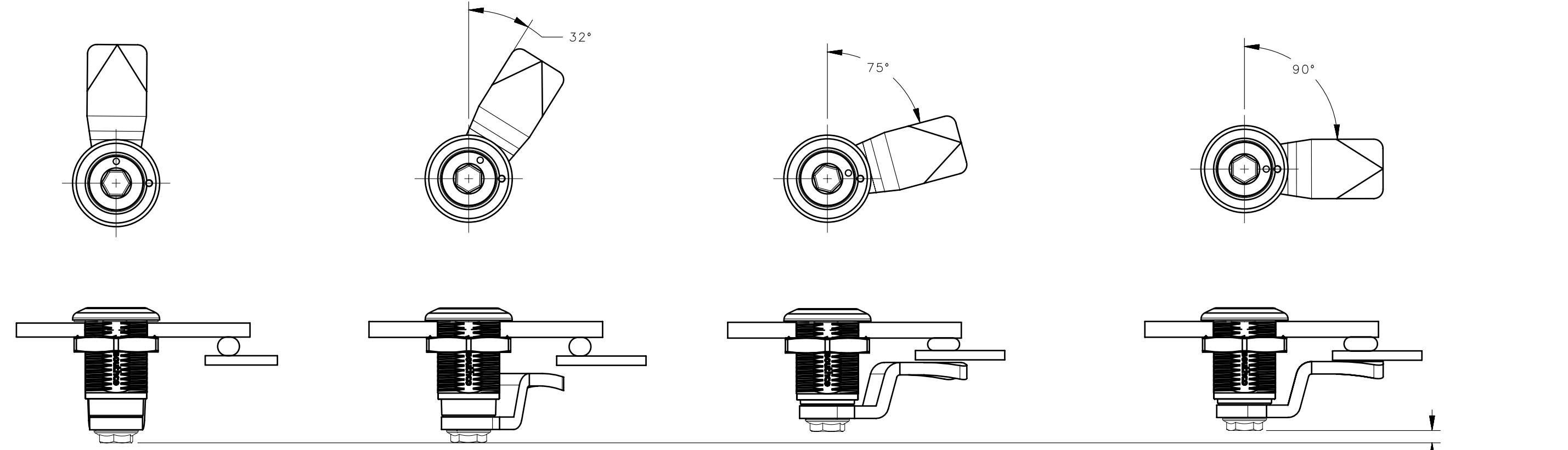
SIZE A3 SYSTEM NX DWG NO. J-E9-A0HHF-0M

PER ASME Y14.5M-2009 DRAWN BY BVH DATE 19MAR2021 SCALE NTS SHEET 1 OF 3

**southco**  
CONNECT · CREATE · INNOVATE

REVISION HISTORY			
REV	DATE	BY	DESCRIPTION
C	19AUG2024	IR/DMS	PRN: P2024-1328

*LATCHING MOTION (CW ROTATION SHOWN)*



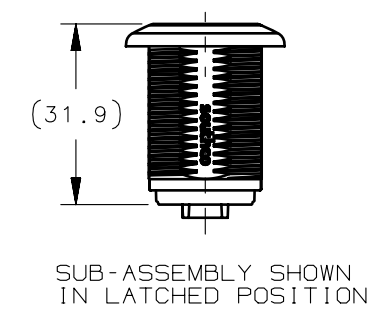
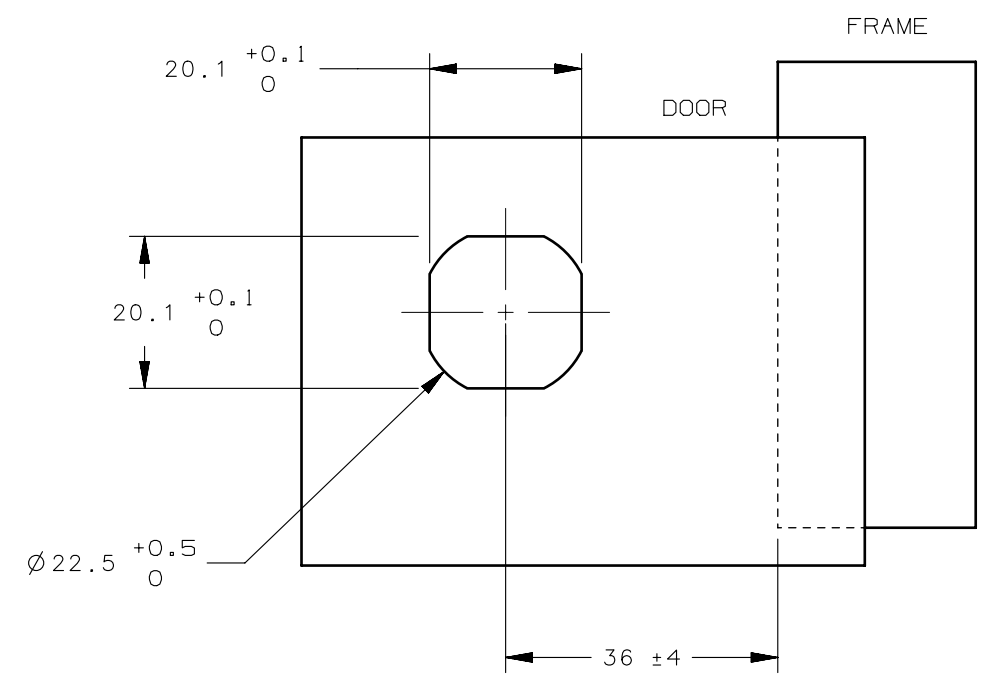
UNLATCHED POSITION

OPERATION: 90° TURN OF DRIVER CAUSES DRIVER AND CAM TO ROTATE TOGETHER AND LIFT UP AS SHOWN. IN LATCHED POSITION, CAM POSITION INDICATORS ON DRIVER AND HOUSING ALIGN TO INDICATE LATCH IS SECURE.

LATCHED POSITION

(4) TOTAL COMPRESSION

*PANEL PREPARATION*



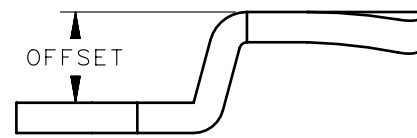
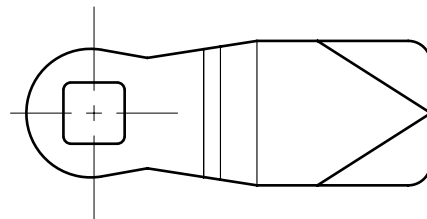
SUB-ASSEMBLY SHOWN IN LATCHED POSITION

CPB NUMBER 2019-1284	THIRD ANGLE PROJECTION	<b>southco</b> <sup>®</sup> CONNECT • CREATE • INNOVATE	
	MILLIMETERS [IN]		
SURFACE AREA N/A	TOLERANCES UNLESS OTHERWISE NOTED	DESCRIPTION E9 COMPRESSION LATCH ZINC - FIXED GRIP - TOOL OPERATION	
VOLUME N/A		ALL DIMENSIONS WITHOUT TOLERANCES ARE FOR REFERENCE ONLY.	SIZE A3
PROPRIETARY ITEM EXCEPT FOR USES EXPRESSLY GRANTED IN WRITING, INFORMATION DISCLOSED HEREON IS CONFIDENTIAL AND ALL RIGHTS, PATENT AND OTHERWISE, ARE RESERVED BY SOUTHCO, INC.	PER ASME Y14.5M-2009	DWG NO. J-E9-A0HHF-0M	
		DRAWN BY BVH	DATE 19MAR2021
		SCALE NTS	SHEET 2 OF 3

REVISION HISTORY			
REV	DATE	BY	DESCRIPTION
C	19AUG2024	IR/DMS	PRN: P2024-1328

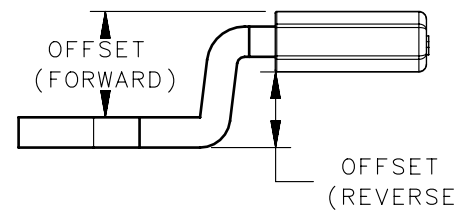
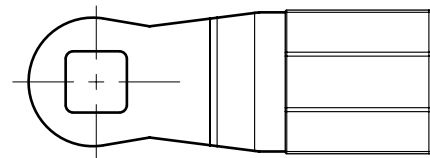
*COMPATIBLE CAM STYLES (ORDER SEPARATELY)*

STANDARD CAMBERED CAM



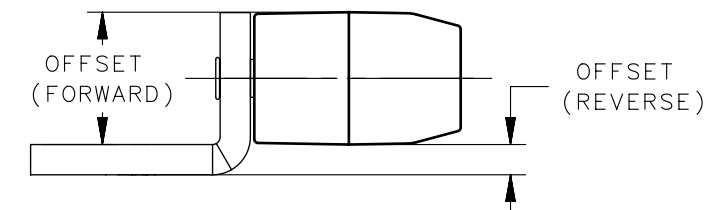
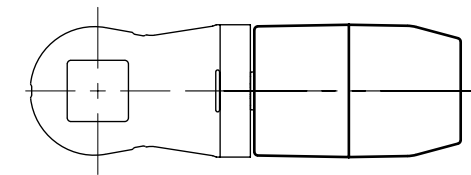
PART NUMBER	GRIP [mm]	GRIP [in]
E5-6126	1	0.04
E5-6125	3	0.11
E5-6124	5	0.19
E5-6123	7	0.27
E5-6101	9	0.35
E5-6102	11	0.43
E5-6103	13	0.51
E5-6104	15	0.59
E5-6105	17	0.67
E5-6106	19	0.74
E5-6107	21	0.82
E5-6108	23	0.9
E5-6109	25	0.98
E5-6110	27	1.06
E5-6111	29	1.14
E5-6112	31	1.22
E5-6113	33	1.3
E5-6114	35	1.37
E5-6115	37	1.45
E5-6116	39	1.53
E5-6117	41	1.61
E5-6118	43	1.69
E5-6119	45	1.77
E5-6120	47	1.85
E5-6121	49	1.93
E5-6122	51	2

WEAR-RESISTANT PLASTIC SLEEVED CAM



PART NUMBER	ORIENTATION	GRIP [mm]	GRIP [in]
E5-6121-P	FORWARD	1	0.04
E5-6120-P	FORWARD	3	0.11
E5-6119-P	FORWARD	5	0.19
E5-6118-P	FORWARD	7	0.27
E5-6117-P	FORWARD	9	0.35
E5-6116-P	FORWARD	11	0.43
E5-6115-P	FORWARD	13	0.51
E5-6114-P	FORWARD	15	0.59
E5-6113-P	FORWARD	17	0.67
E5-6112-P	FORWARD	19	0.74
E5-6111-P	FORWARD	21	0.82
E5-6110-P	FORWARD	23	0.9
E5-6109-P	FORWARD	25	0.98
E5-6110-P	REVERSE	27	1.06
E5-6111-P	REVERSE	29	1.14
E5-6112-P	REVERSE	31	1.22
E5-6113-P	REVERSE	33	1.3
E5-6114-P	REVERSE	35	1.37
E5-6115-P	REVERSE	37	1.45
E5-6116-P	REVERSE	39	1.53
E5-6117-P	REVERSE	41	1.61
E5-6118-P	REVERSE	43	1.69
E5-6119-P	REVERSE	45	1.77
E5-6120-P	REVERSE	47	1.85
E5-6121-P	REVERSE	49	1.93
E5-6122-P	REVERSE	51	2
E5-6123-P	REVERSE	53	2.08

STEEL AND PLASTIC ROLLER CAM



PART NUMBER	ORIENTATION	GRIP [mm]	GRIP [in]
E5-7116	FORWARD	1	0.06
E5-7115	FORWARD	3	0.13
E5-7114	FORWARD	5	0.21
E5-7113	FORWARD	7	0.29
E5-7112	FORWARD	9	0.37
E5-7111	FORWARD	11	0.45
E5-7110	FORWARD	13	0.53
E5-7109	FORWARD	15	0.61
E5-7109	REVERSE	25	0.98
E5-7110	REVERSE	27	1.06
E5-7111	REVERSE	29	1.14
E5-7112	REVERSE	31	1.22
E5-7113	REVERSE	33	1.3
E5-7114	REVERSE	35	1.37
E5-7115	REVERSE	37	1.45
E5-7116	REVERSE	39	1.53
E5-7117	REVERSE	41	1.61
E5-7118	REVERSE	43	1.69
E5-7119	REVERSE	45	1.77
E5-7120	REVERSE	47	1.85
E5-7121	REVERSE	49	1.93
E5-7122	REVERSE	51	2

CPB NUMBER 2019-1284	THIRD ANGLE PROJECTION	<b>southco</b> <sup>®</sup> CONNECT • CREATE • INNOVATE
SURFACE AREA N/A	MILLIMETERS [IN]	
VOLUME N/A	TOLERANCES UNLESS OTHERWISE NOTED	DESCRIPTION E9 COMPRESSION LATCH ZINC - FIXED GRIP - TOOL OPERATION
PROPRIETARY ITEM <small>EXCEPT FOR USES EXPRESSLY GRANTED IN WRITING, INFORMATION DISCLOSED HEREON IS CONFIDENTIAL AND ALL RIGHTS, PATENT AND OTHERWISE, ARE RESERVED BY SOUTHCO, INC.</small>	ALL DIMENSIONS WITHOUT TOLERANCES ARE FOR REFERENCE ONLY.	SIZE SYSTEM A3 NX
PER ASME Y14.5M-2009	DRAWN BY BVH	DWG NO. J-E9-A0HHF-0M
	DATE 19MAR2021	SCALE NTS
		SHEET 3 OF 3