



E3 VISE ACTION® Compression Latch

Stainless steel housing · Tool operated
 Compact · Fixed grip · 20.1mm size

- Minimal panel intrusion
- Consistent pre-set compression
- Corrosion resistance
- Tool operated for security
- EN 45545-3 E60 Compliant



Material and Finish

Stainless steel 316

Performance Details

Compression: 6.4 mm (.25 in)
 Maximum static load: 300 N (67 lbf)

Sealing Notes

NEMA 4 and IP65 enabled by using supplied flange gasket

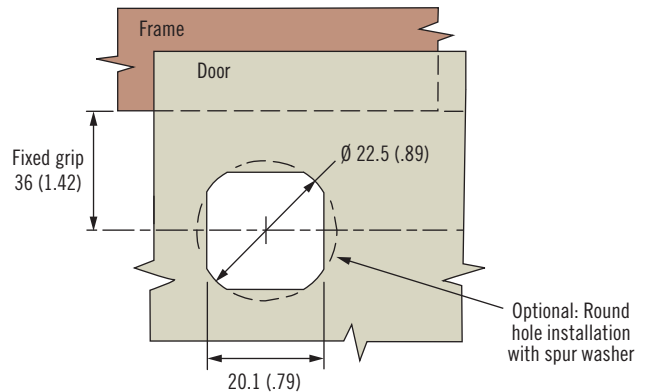
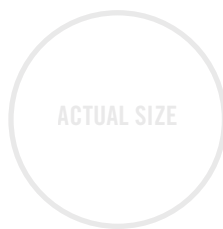
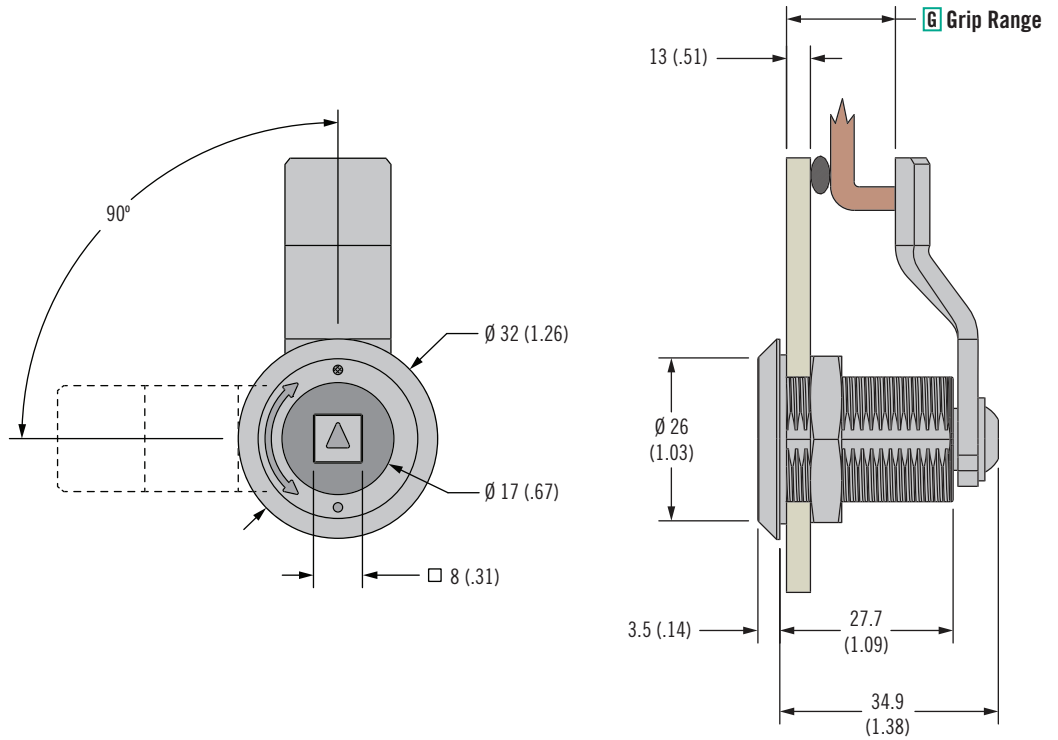
Installation Notes

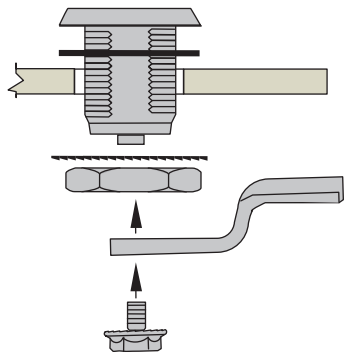
Recommended tightening torque for the mounting nut is 20 N-m (176 in-lbf)
 Fixed Grip: Mounting screw torque 10 N-m (88 in-lbf)

Keys and Accessories

See pages 118-121

FIXED GRIP



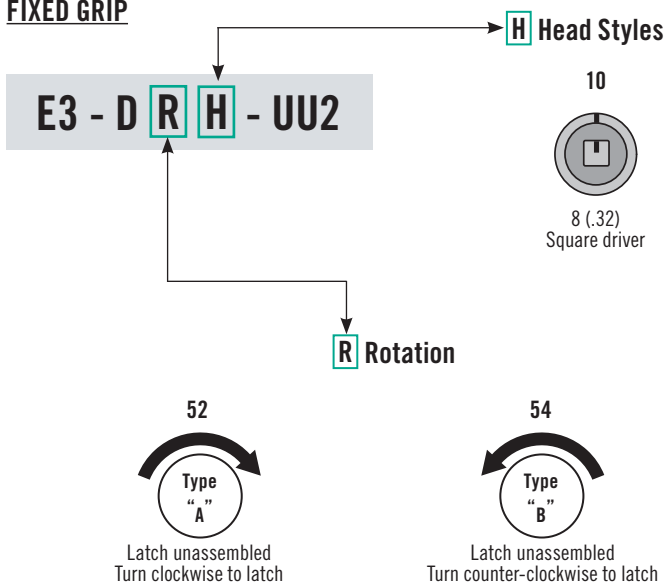


Part Number Selection

See table

Order latch and cam separately.

FIXED GRIP



Cam Part Number (order separately from latch)			
Grip	Part Number	Grip	Part Number
10 (.39)	E3-28-700-24	30 (1.18)	E3-28-710-24
12 (.47)	E3-28-701-24	32 (1.26)	E3-28-711-24
14 (.55)	E3-28-702-24	34 (1.34)	E3-28-712-24
16 (.63)	E3-28-703-24	36 (1.42)	E3-28-713-24
18 (.71)	E3-28-704-24	38 (1.50)	E3-28-714-24
20 (.79)	E3-28-705-24	40 (1.57)	E3-28-715-24
22 (.87)	E3-28-706-24	42 (1.65)	E3-28-716-24
24 (.94)	E3-28-707-24	44 (1.73)	E3-28-717-24
26 (1.02)	E3-28-708-24	46 (1.81)	E3-28-718-24
28 (1.10)	E3-28-709-24	48 (1.89)	E3-28-719-24

Select grip from Cam table.

If your grip is between two options choose the smaller grip.