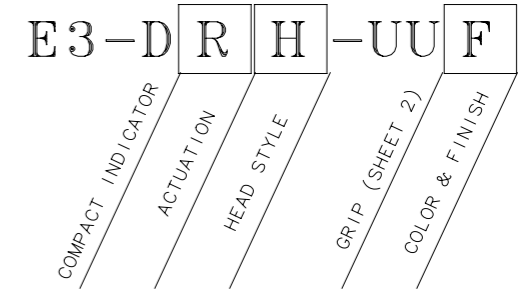
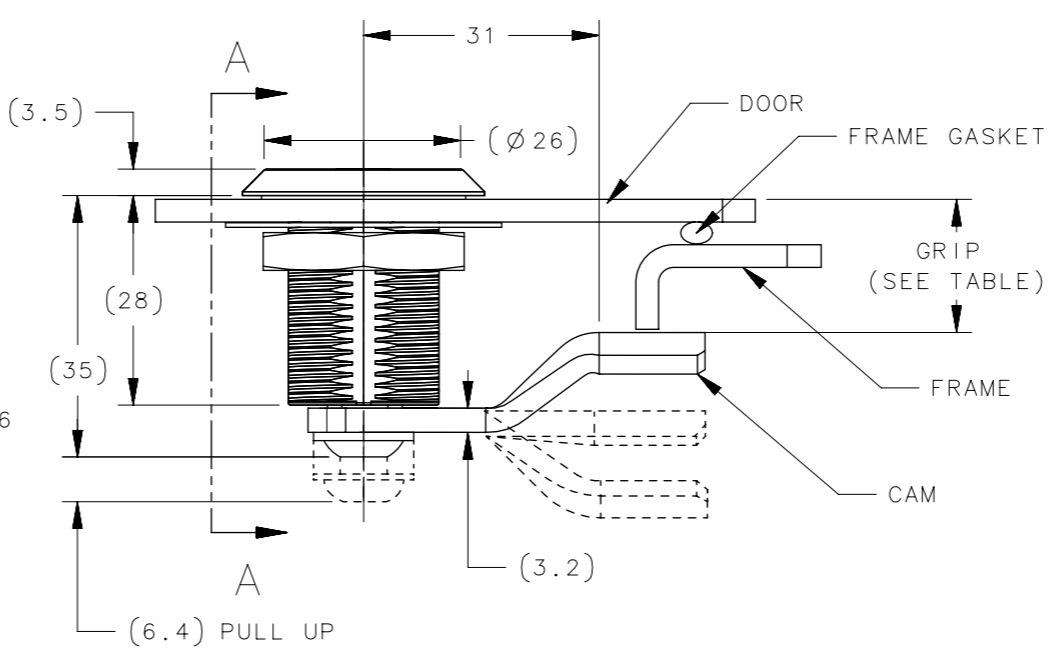
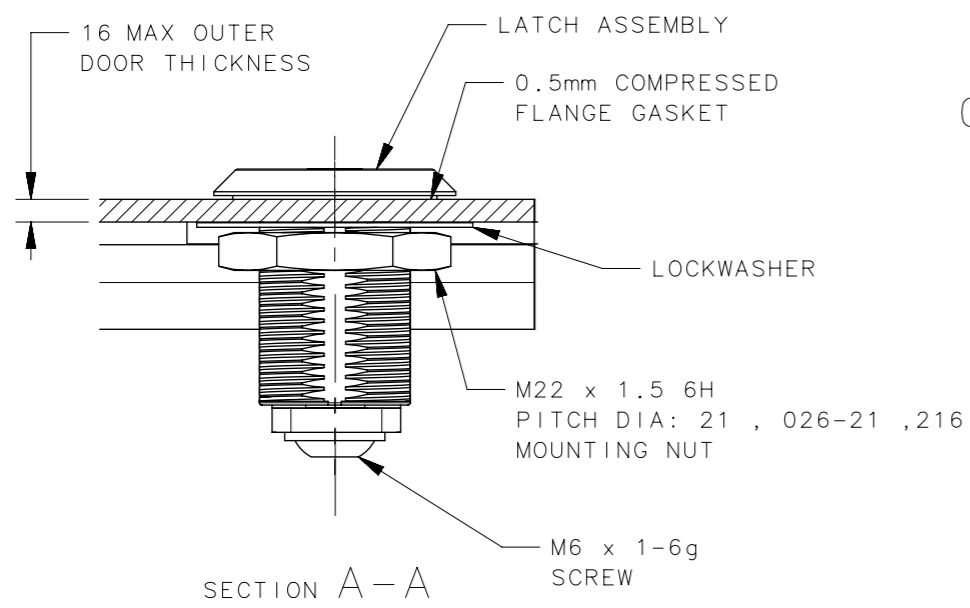
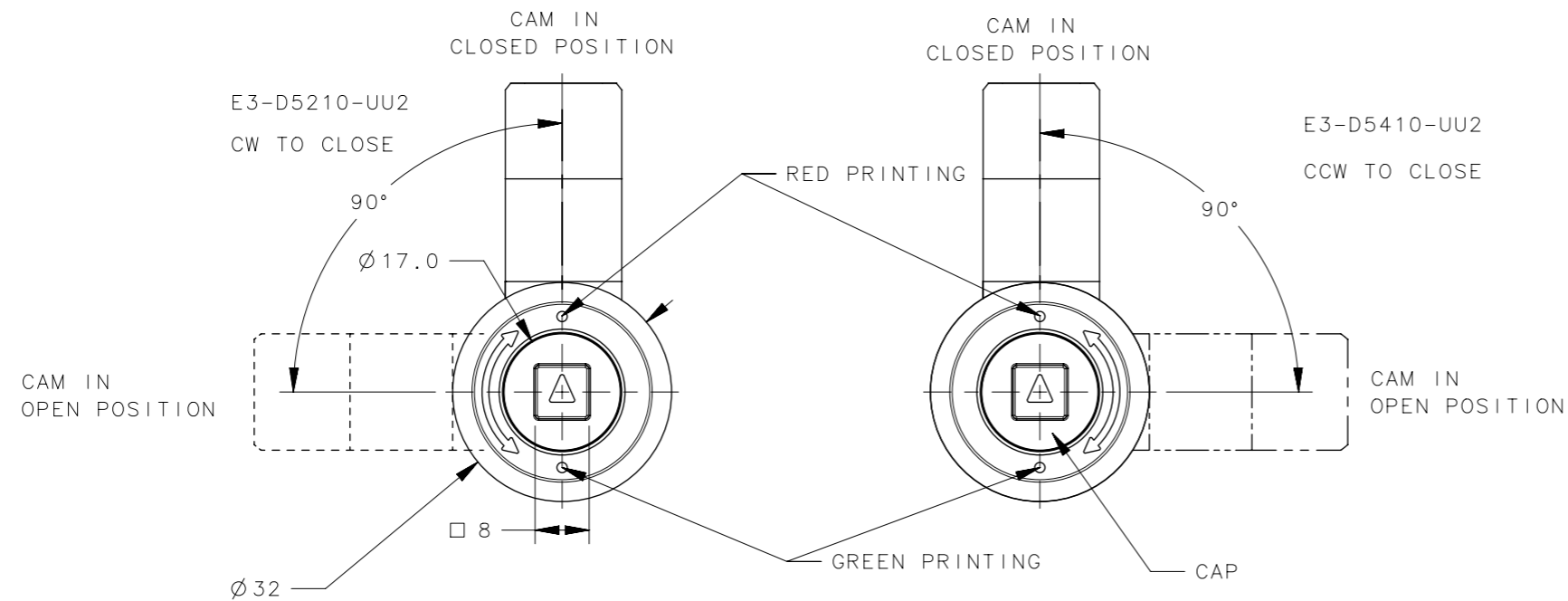


REVISION HISTORY			
REV	DATE	BY	DESCRIPTION
B	13AUG2024	GJL/SAK	PRN: P2024-1388

STANDARD PART NUMBER



- R** = ACTUATION STYLE
- 52 = TYPE A CLOCKWISE TO LATCH - LATCH UNASSEMBLED
 - 54 = TYPE B COUNTER-CLOCKWISE TO LATCH - LATCH UNASSEMBLED
- UU** = GRIP
- CAM ORDERED SEPARATELY, FOR CAM PART NUMBERS AND RESULTING GRIP DISTANCE SEE CAM TABLE
- H** = HEAD STYLE
- 10 = 8mm SQUARE
- F** = FINISH
- 2 = MIM-ELECTROPOLISHED

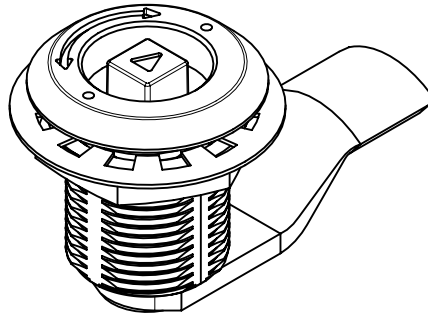


- NOTES:
- CLOSE OPERATION: 180° TURN OF CAP OR KEY CAUSES CAM TO ROTATE THEN PULL UP AS SHOWN.
 - INSTALLTION:
 - INSERT LATCH INTO THE HOLE OF THE DOOR IN THE UNLATCHED POSITION.CHECK FOR PROPER ORIENTATION AND OPERATION OF CAM.
 - INSTALL LOCKWASHER AND MOUNTING NUT ONTO HOUSING. RECOMMENDED TIGHTENING TORQUE FOR MOUNTING NUT IS 20Nm AND THE MOUNTING SCREW IS 10Nm.
 - THE RECOMMENDED MAX LATCH CLOSING TORQUE IS NO MORE THAN 7.9Nm.
 - MAX. STATIC LOAD: REFER TO TD-E3-D5.
 - VISIBLE SURFACE AFTER INSTALLATION WILL HAVE BRIGHT ELECTROPOLISHED FINISH AND OTHER SURFACES WILL HAVE ELECTROPOLISHED FINISH.

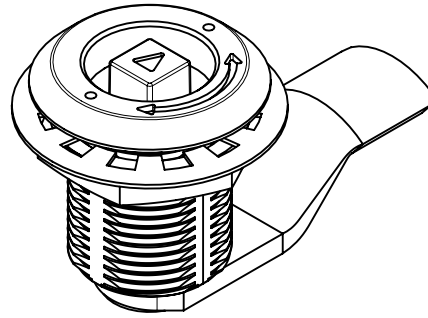
DESCRIPTION	MATERIAL	FINISH
GASKET SEAL	BUNA-N	BLACK
MOUNTING NUT	STAINLESS STEEL	PASSIVATION
LOCK WASHER	STAINLESS STEEL	PASSIVATION
SCREW	STAINLESS STEEL	PASSIVATION
CAM	STAINLESS STEEL	PASSIVATION
PIN	1008 STEEL	ZINC PLATE
SHAFT	STAINLESS STEEL	PASSIVATION
INTERNAL CAM	1075 STEEL	ZINC COATING
SLEEVE	1075 STEEL	ZINC COATING
O-RING	BUNA-N	NATURAL
SPRING	STAINLESS STEEL	NATURAL
RETAINER	STAINLESS STEEL	NATURAL
CAP	STAINLESS STEEL	ELECTROPOLISH
HOUSING	STAINLESS STEEL	ELECTROPOLISH

THIRD ANGLE PROJECTION	MILLIMETERS [IN]		
TOLERANCES UNLESS OTHERWISE NOTED		E3 COMPACT, MIM	
ALL DIMENSIONS WITHOUT TOLERANCES ARE FOR REFERENCE ONLY.		FIXED GRIP, 180 DEGREE	
PROPRIETARY ITEM	SIZE A3	SYSTEM NX	DWG NO. J-E3-D5H-02
EXCEPT FOR USES EXPRESSLY GRANTED IN WRITING, INFORMATION DISCLOSED HEREON IS CONFIDENTIAL AND ALL RIGHTS, PATENT AND OTHERWISE, ARE RESERVED BY SOUTHCO, INC.	PER ASME Y14.5M-2009	DRAWN BY HDF	DATE 30AUG2023
		SCALE 1:1	SHEET 1 OF 2

E3-D5210-UU2

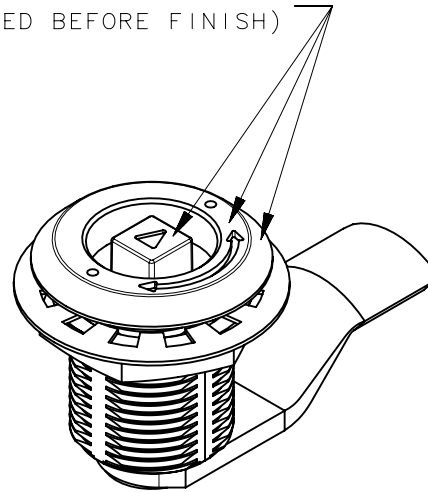
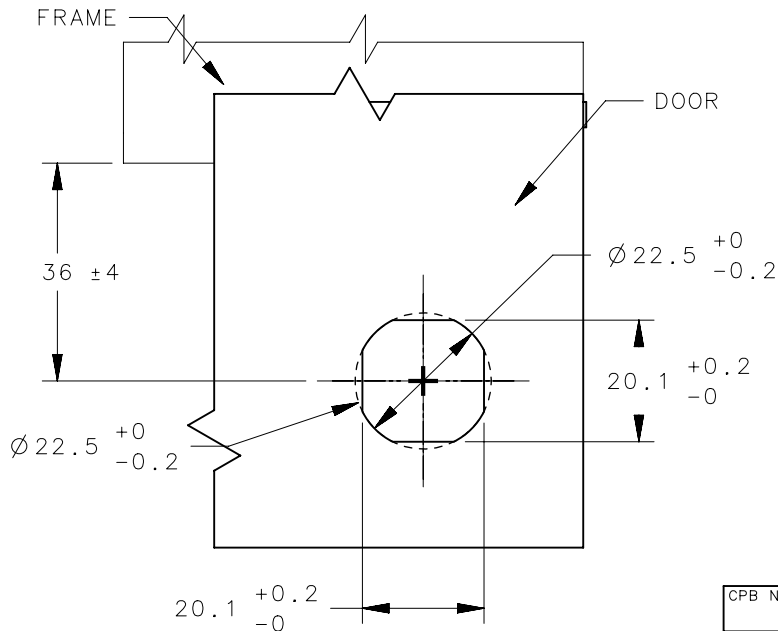


E3-D5410-UU2



GLOSSY ELECTROPOLISH FINISH
(SURFACE MACHINED BEFORE FINISH)

INSTALLATION VIEW



REVISION HISTORY

REV	DATE	BY	DESCRIPTION
B	13AUG2024	GJL/SAK	PRN: P2024-1388

CAM PART NUMBER (ORDERED SEPARATELY)

TOTAL GRIP (mm)	CAM PART NUMBER
-	NO CAM
10	E3-28-700-24
12	E3-28-701-24
14	E3-28-702-24
16	E3-28-703-24
18	E3-28-704-24
20	E3-28-705-24
22	E3-28-706-24
24	E3-28-707-24
26	E3-28-708-24
28	E3-28-709-24
30	E3-28-710-24
32	E3-28-711-24
34	E3-28-712-24
36	E3-28-713-24
38	E3-28-714-24
40	E3-28-715-24
42	E3-28-716-24
44	E3-28-717-24
46	E3-28-718-24
48	E3-28-719-24

CPB NUMBER	THIRD ANGLE PROJECTION	 CONNECT • CREATE • INNOVATE	
	MILLIMETERS [IN]		
SURFACE AREA	TOLERANCES UNLESS OTHERWISE NOTED	DESCRIPTION	
VOLUME	ALL DIMENSIONS WITHOUT TOLERANCES ARE FOR REFERENCE ONLY.	E3 COMPACT, MIM FIXED GRIP, 180 DEGREE	
PROPRIETARY ITEM EXCEPT FOR USES EXPRESSLY GRANTED IN WRITING, INFORMATION DISCLOSED HEREON IS CONFIDENTIAL AND ALL RIGHTS, PATENT AND OTHERWISE, ARE RESERVED BY SOUTHCO, INC.	PER ASME Y14.5M-2009	SIZE A4	SYSTEM NX
		DWG NO. J-E3-D5H-02	
		DRAWN BY HDF	DATE 30AUG2023
		SCALE 1:1	SHEET 2 OF 2