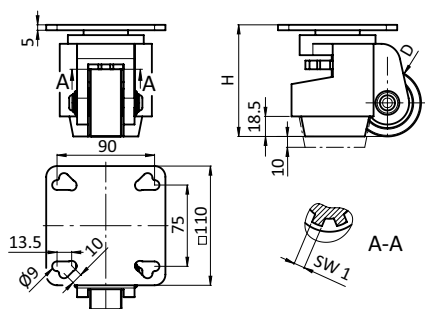


LEVELING CASTOR WITH MOUNTING PLATE 40 / 45

MODEL	With mounting plate
DESCRIPTION	Reliable leveling castor with integrated mounting plate For fixation to aluminum profiles with modular dimension 40 and 45 mm without overhang No additional transport and base plate needed; Roller movement locking by temporary positioning on stamp, actuation of the height adjustment of the stamp via adjustment wheel in the castor housing with wrench
MATERIAL	Mounting plate: Steel Housing: Aluminum die-cast Adjustment wheel: Plastic PA Stamp: Rubber NBR Roller: Plastic PA
SURFACE	Mounting plate: Zinc plated Housing: Powder coated
COLOR	Housing: White aluminum ≈ RAL 9006 Adjustment wheel: Orange ≈ RAL 2004 Stamp: Black Roller: Black
PACK QUANTITY	4 pieces



D	H	MAX. LOAD [KG]	SW 1	WEIGHT [g]	PART #
62	103	500	12	1345.0	098LF062AF110110

