

SPLIT CABLE GROMMET LS50S-S Metallic / With Lid



LS50S-S-SN



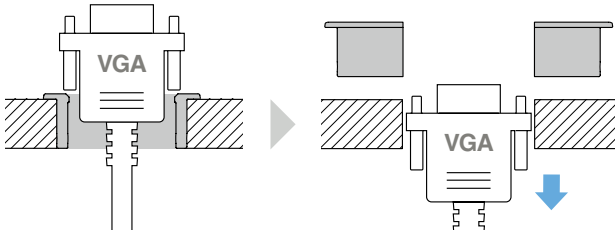
LS50S-S-DB



LS50S-S-BL

- Comes with a removable lid to fit most wires.
- Made of zinc alloy with stylish finishes.
- Can be split into two parts for easy cable replacement. Even when exchanging with cables which have bigger plugs than the grommet, there is no need to take apart them.
- The lid is equipped with rubbers on the back side to prevent it from coming off unintentionally.

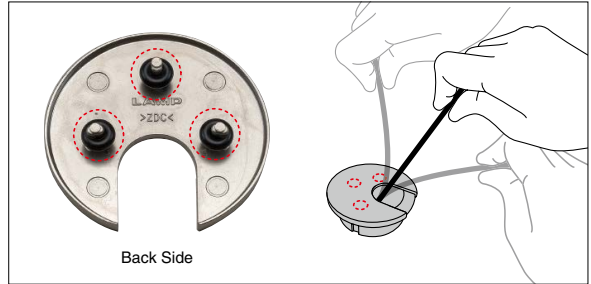
[Split System] Easy to replace cables.



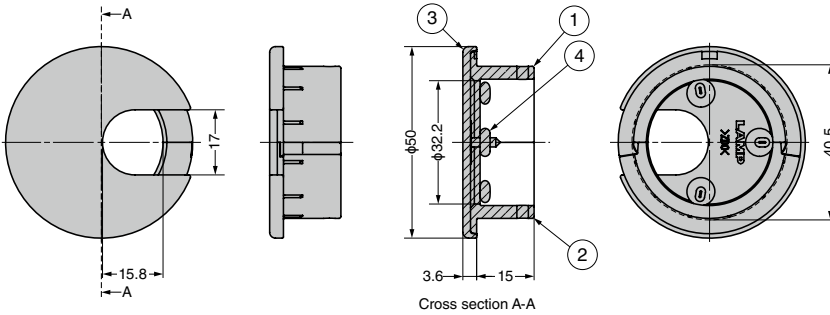
[Remarks]

- Do not change the combination of the split parts.
- Each antique brass finish looks slightly different because it is polished by hand.

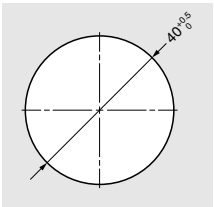
[Securely Hold the Lid]



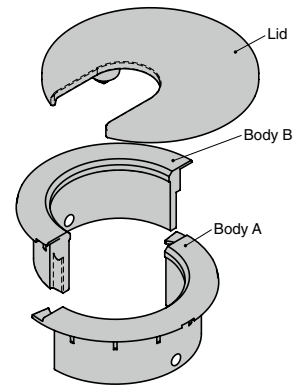
The o-ring rubbers hold the lid in position even when cables are moved.



[Cut Out Dimensions]



[Components]



RoHS	CAD	Item Code	Item Name	Finish/Colour	Weight (g)	Box (pcs)	Carton (pcs)
●	●	210-047-811	LS50S-S-SN	Satin Nickel	64	20	160
●	●	210-047-813	LS50S-S-DB	Antique Brass		20	160
●	●	210-047-814	LS50S-S-BL	Chrome/Matte Black		20	160

No.	Part Name	Material	Finish/Colour
①	Body A	Zinc Alloy (ZDC)	See the table on the left
②	Body B		
③	Lid		
④	O-ring	Nitrile Rubber (NBR)	Black