

## Floating suction cup

SBS 10 SF M5-IG ESD/AL

Part no...:10.01.01.14668

<https://www.schmalz.com/10.01.01.14668>

Home > Vacuum Technology for Automation > Vacuum Components > Special Grippers > Floating Suction Cups > Floating Suction Cups SBS-ESD > SBS 10 SF M5-IG ESD/AL

### Floating suction cup for handling sensitive workpieces



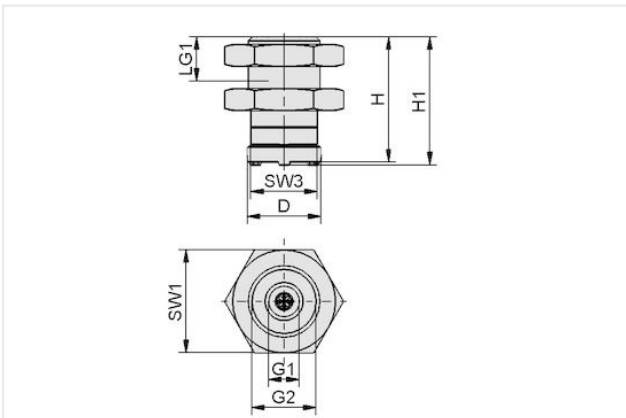
Diameter: 10 mm

Shape: Standard Flow

Compressed-air connection: M5-F

Material: ESD/AL

### Design Data



Attribute	Value
D	10 mm
G1	M5-F
G2	G1/8"-M
H	17 mm
H1	17.40 mm
LG1	5 mm
SW1	14 mm
SW3	9 mm

### Technical Data

Attribute	Value
Holding force	1.40 N
Air consumption	5.10 m <sup>3</sup> /h
Air consumption	85 l/min
Pressure range (operating pressure)	1.0 ... 6.0 bar
Weight	7.50 g

### Contact Schmalz

J. Schmalz GmbH | Johannes-Schmalz-Str.1, D-72293 Glatten | +49 7443 2403-102 | [customercenter@schmalz.de](mailto:customercenter@schmalz.de)

## Floating suction cup

SBS 10 SF M5-IG ESD/AL

Part no...:10.01.01.14668

<https://www.schmalz.com/10.01.01.14668>

### Accessories



#### HTR-STA 47 1N D10/16 FL

Part no...:10.08.03.00085

Length L: 47 mm

Connection 1: Sliding block

Connection of suction cup, spring plunger: Contour D10 and D16

Shape: flat

### Spare parts



#### REIB-RING SBS 10 NBR-ESD-55

Part no...:10.01.01.14669

Construction use: Floating suction cup

Size: 10

Suction cup material: Nitrile rubber NBR-ESD

Material hardness [Shore A]: 55 Shore A

External diameter D: 10 mm

Internal diameter d: 5.7 mm