

LID STAY

L=R

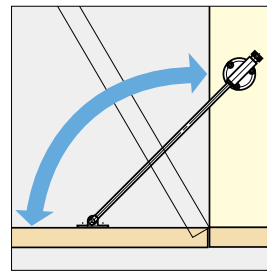
S-35



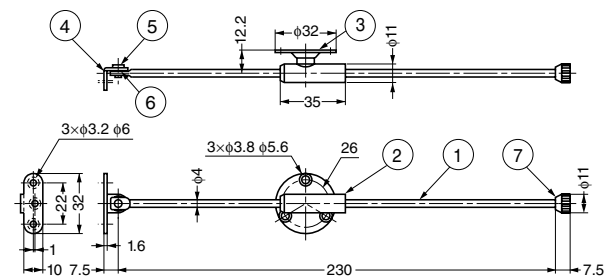
Features

Non-handed.

Installation



No.	Part Name	Material	Finish/Colour
①	Arm	Steel	Chrome
②	Arm Guide	Polyamide (PA)	Brown
③	Bracket	Steel	Chrome
④	Bracket	Steel	Chrome
⑤	Axis	Brass	Chrome
⑥	N Washer	Polyamide (PA)	-
⑦	Nut	Brass	Nickel



Item Code	Item Name	Weight	Box	Carton
180-100-151	S-35	44 g	60 pcs	300 pcs

LID SUPPORTS

LID STAY

LID STAY

L=R

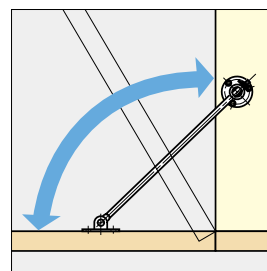
S-34



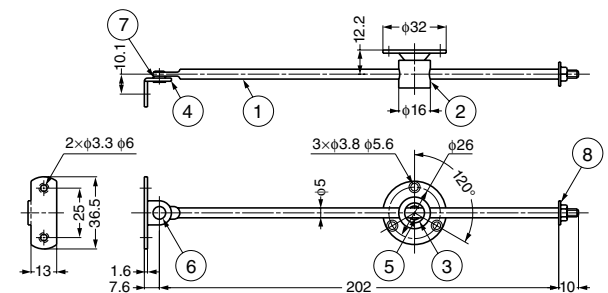
Features

Non-handed.

Installation



No.	Part Name	Material	Finish/Colour
①	Arm	Steel	Chrome
②	Arm Guide	Polyamide (PA)	Natural
③	Bracket	Steel	Chrome
④	Bracket	Steel	Chrome
⑤	Axis A	Steel	Yellow Zinc Chromate
⑥	Axis B	Brass	Chrome
⑦	Washer	Polyamide (PA)	-
⑧	Flanged Hexagon Nut	Steel	Nickel



Item Code	Item Name	Weight	Box	Carton
180-100-150	S-34	54 g	60 pcs	300 pcs