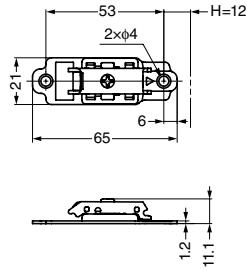


## MOUNTING PLATE 360-P3W-53T Straight Type

OLYMPIA



- The slim design gives a sleek look.

**[Specification]**

- Vertical adjustment : ± 2.5 mm
- Standard height : 0 mm
- Value of H : door thickness + 17 mm in case of inset.
- Value of H : door thickness + 19 mm in use of GH-360FP. 1

**[Remarks]**

- When using with two H360 hinges, door spec should be as below:
  - Door width : max. 450 mm
  - Door weight : max. 7 kg

**[Sold Separately]**

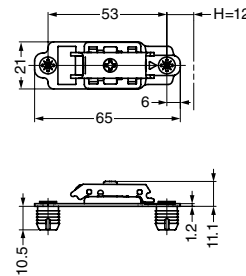
- Raised countersunk head tapping screw 3.5 x 15

RoHS	CAD	Item Code	Item Name	Material	Finish	Weight (g)	Box (pcs)
●	●	160-046-697	360-P3W-53T	Steel	Nickel Plating	20	400

Refer to 1: P.F19

## MOUNTING PLATE 360-P3W-53T-D10 Straight Type / With Dowels

OLYMPIA



- The slim design gives a sleek look.
- Pre-attached with press-in dowels.

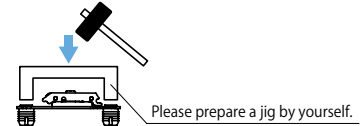
**[Specification]**

- Vertical adjustment : ± 2.5 mm
- Standard height : 0 mm
- Value of H : door thickness + 17 mm in case of inset.
- Value of H : door thickness + 19 mm in use of GH-360FP. 1
- Mounting hole : φ10 (depth: 11mm and more)

**[Remarks]**

- Press in the dowels at the same time.
- When using with two H360 hinges, door spec should be as below:
  - Door width : max. 450 mm
  - Door weight : max. 7 kg

**[Installation]**



RoHS	CAD	Item Code	Item Name	Material	Finish	Dowel Material	Weight (g)	Box (pcs)
●	●	160-046-698	360-P3W-53T-D10	Steel	Nickel Plating	Polyamide (PA)	24	400

Refer to 1: P.F19

## RAISED COUNTERSUNK HEAD TAPPING SCREW 3.5x15 For OLYMPIA and 230 Hinges



Nickel Type : Sold in 400 pieces.  
Black Nickel Type : Sold in one piece.

RoHS	CAD	Item Code	Item Name	Material	Finish
●	-	160-070-030	TAP3515NI	Steel	Nickel Plating
●	-	160-034-786	TAP3515BN		Black Nickel Plating