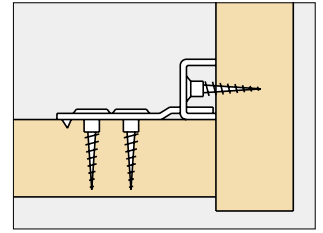
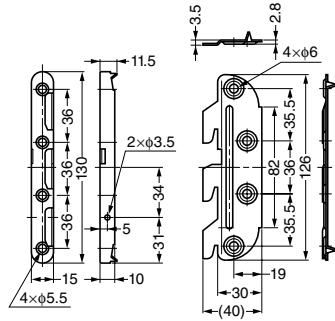


CONNECTING PART

BF-806

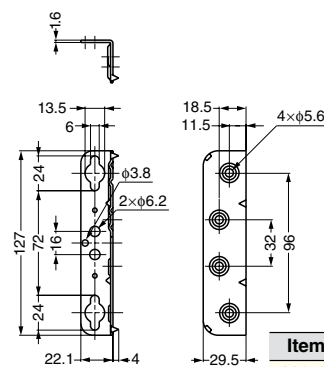


The drawing shows BF-8061: a mirror-image of BF-8062.

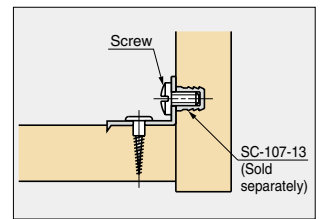
Item Code	Item Name	Material	Finish	Weight	Box	Carton
120-041-262	BF-8061	Steel	Yellow Zinc Chromate	72.5 g	30 sets	270 sets
120-041-263	BF-8062	Steel	Yellow Zinc Chromate	72.5 g	30 sets	270 sets

CONNECTING PART

BF-810



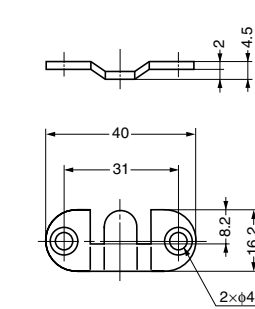
Sold Separately
SC-107-13 (P.191)
Recommended Screw
Tapping screw M6×10



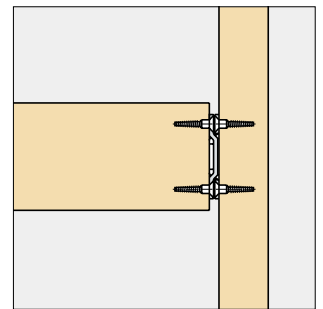
Item Code	Item Name	Material	Finish	Weight	Box	Carton
120-041-264	BF-810	Steel	Yellow Zinc Chromate	69.3 g	50 pcs	500 pcs

CONNECTING PART

BF-857



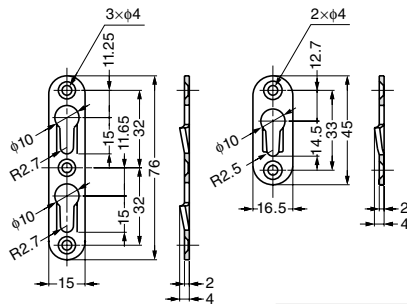
Remarks
Please use 2 pcs as a set.
1 pack includes 500 pieces



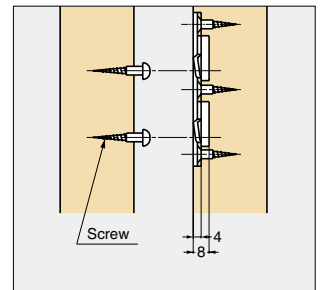
Item Code	Item Name	Material	Finish	Weight	Box	Carton
120-038-037	BF-857-P500	Steel	Yellow Zinc Chromate	7.4 g	1 pack	4 packs

CONNECTING PART

BF-K



Remarks
1 pack includes 20 pieces



Item Code	Item Name	Material	Finish	Weight	Box	Carton
120-038-039	BF-KW-P20	Steel	Clear Zinc Chromate	10.1 g	10 packs	100 packs
120-038-038	BF-KS-P20	Steel	Clear Zinc Chromate	6.8 g	10 packs	200 packs

BRACKETS & SHELVING SYSTEM
CONNECTING PART