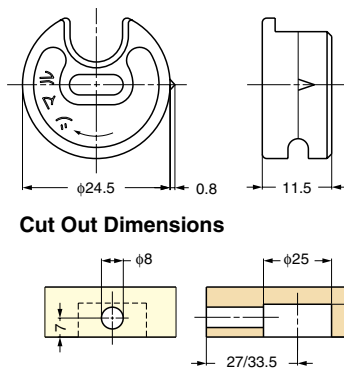


SHELF CLAMP

KD-703

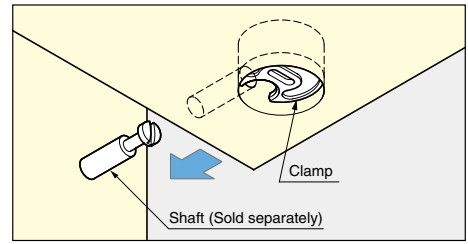


Cut Out Dimensions

Sold Separately

- Shafts (Below).
- Cover, KD-752 (Below).

Installation Example



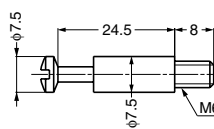
Item Code	Item Name	Material	Finish	Weight	Box	Carton
120-041-037	KD-703	Zinc Alloy (ZDC)	Plain	11.6 g	200 pcs	2000 pcs

SHAFT FOR SHELF CLAMP

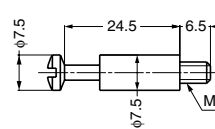
KD-601



KD-601-245C (M6)



KD-601-245A (M4)



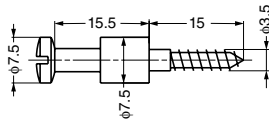
Features

For KD-703.

Item Code	Item Name	Screw	Material	Finish	Weight	Box	Carton
120-041-048	KD-601-245C	M6	Steel	Yellow Zinc Chromate	8.5 g	300 pcs	3000 pcs
120-041-049	KD-601-245A	M4	Steel	Yellow Zinc Chromate	8.5 g	300 pcs	3000 pcs

SHAFT FOR SHELF CLAMP

KD-622-155



Features

For KD-703.

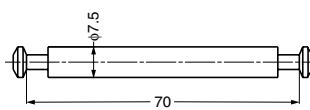
Sold Separately

Insert screw SC-108-W (P.191), SC-110-W (P.191).

Item Code	Item Name	Material	Finish	Weight	Box	Carton
120-041-091	KD-622-155	Steel	Yellow Zinc Chromate	5.1 g	400 pcs	2000 pcs

SHAFT FOR SHELF CLAMP

KD-681-70



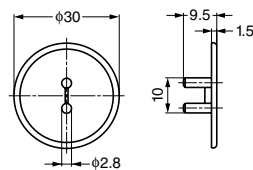
Features

For KD-703.

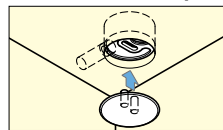
Item Code	Item Name	Material	Finish	Weight	Box	Carton
120-041-039	KD-681-70	Steel	Yellow Zinc Chromate	23.3 g	100 pcs	500 pcs

COVER FOR KD-703

KD-752



Installation Example



Features

For KD-703.

Item Code	Item Name	Material	Colour	Weight	Box	Carton
120-041-040	KD-752W	Polypropylene (PP)	White	0.56 g	500 pcs	10000 pcs
120-041-056	KD-752C	Polypropylene (PP)	Cream	0.56 g	500 pcs	10000 pcs
120-041-041	KD-752BR	Polypropylene (PP)	Brown	0.56 g	500 pcs	10000 pcs
120-041-055	KD-752B	Polypropylene (PP)	Black	0.56 g	500 pcs	10000 pcs
120-041-036	KD-752I	Polypropylene (PP)	Ivory	0.56 g	500 pcs	10000 pcs