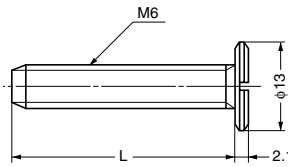
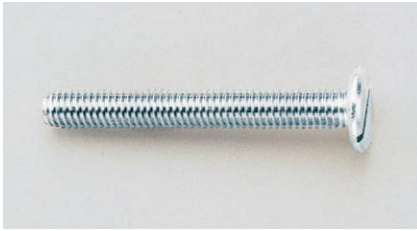


Please refer to P.180

CONNECTOR SYSTEM

CS-401

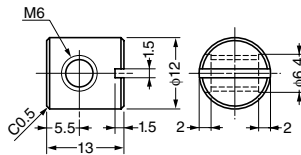


Sold Separately  
Cap CS-492 (P.181).

Item Code	Item Name	Material	Finish	L	Weight	Carton
120-040-537	CS-401-26	Steel	Yellow Zinc Chromate	26	6.2 g	3500 pcs
120-040-535	CS-401-40	Steel	Yellow Zinc Chromate	40	8.6 g	2500 pcs
120-040-539	CS-401-54	Steel	Yellow Zinc Chromate	54	11.0 g	1500 pcs

CONNECTOR SYSTEM

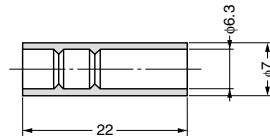
CS-465



Item Code	Item Name	Material	Finish	Weight	Box	Carton
120-041-029	CS-465	Zinc Alloy (ZDC)	Nickel	6.9 g	250 pcs	2000 pcs

CONNECTOR SYSTEM

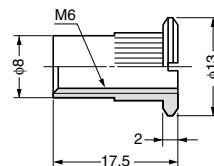
CS-481



Item Code	Item Name	Material	Color	Weight	Box	Carton
120-041-031	CS-481	Polyethylene (PE)	White	0.28 g	1000 pcs	10000 pcs

CONNECTOR SYSTEM

CS-447



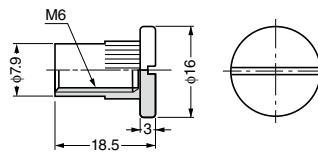
Features  
 • CS-447-1 : Screw hole is pierced.  
 • CS-447-2 : Screw hole is not pierced.

Sold Separately  
 CS-492 (P.181)

Item Code	Item Name	Material	Finish	Weight	Box	Carton
120-040-530	CS-447-1	Steel	Yellow Zinc Chromate	4.3 g	400 pcs	4000 pcs
120-040-531	CS-447-2	Steel	Yellow Zinc Chromate	4.9 g	400 pcs	4000 pcs

CONNECTOR SYSTEM

CS-448



Item Code	Item Name	Material	Finish	Weight	Box	Carton
120-041-027	CS-448	Steel	Nickel	7.2 g	300 pcs	3000 pcs

ANCHOR

Made To Order

SC-127



Remarks  
 Made to order with a minimum order of 5 cartons.

Item Code	Item Name	Material	Finish	Screw	C	H	Weight	Carton
-	SC-127-8	Zinc Alloy (ZDC)	Yellow Zinc Chromate	M6	11	8	1.7 g	10000 pcs
-	SC-127-10B	Zinc Alloy (ZDC)	Yellow Zinc Chromate	M5	9	10	1.5 g	10000 pcs
-	*SC-127-10B6	Zinc Alloy (ZDC)	Yellow Zinc Chromate	M5	9.5	10	1.6 g	10000 pcs
-	SC-127-13C	Zinc Alloy (ZDC)	Yellow Zinc Chromate	M6	11	13	2.8 g	6000 pcs
-	*SC-127-13C6	Zinc Alloy (ZDC)	Yellow Zinc Chromate	M6	11	13	2.9 g	6000 pcs
-	SC-127-13E	Zinc Alloy (ZDC)	Yellow Zinc Chromate	M8	13	13	3.8 g	4000 pcs
-	*SC-127-13E6	Zinc Alloy (ZDC)	Yellow Zinc Chromate	M8	13.5	13	4.5 g	4000 pcs
-	SC-127-20E	Zinc Alloy (ZDC)	Yellow Zinc Chromate	M8	13	20	5.7 g	2500 pcs
-	#SC-127-20G	Zinc Alloy (ZDC)	Yellow Zinc Chromate	M10	15	20	6.7 g	1800 pcs
-	SC-127-25	Zinc Alloy (ZDC)	Yellow Zinc Chromate	M8	14	25	3.9 g	1800 pcs

\*For Hex nut #Flanged type.

BRACKETS & SHELVING SYSTEM  
CONNECTOR SYSTEM