

OUTLET COVER

INSTRUCTION

DMC2



*Outlet and connector sold separately.

Features

- An outlet cover for devices and furniture. An embedded outlet, USB outlet, USB connector, LAN connector or LAN cable case (all sold separately) can be mounted to this product.
- See the Compatibility Table for details on products that can be mounted.
- Can be mounted to a horizontal or vertical surface.
- Flat, clean design with thickness of just 7 mm.
- The cover is made from PBT resin for outstanding chemical resistance.
- Comes with a self-closing cover to keep out dust.

Specifications

Operating temperature: -10°C - +40°C

Application

Airport lounges, hotel lobbies, hotel rooms, cafés, locker rooms, office furniture

Remarks

- Sockets with protruding parts such as switches or phone cable modules cannot be mounted.
- The outlet must be installed by a qualified electrician.
- Do not allow water or dust to enter the plug insertion part of the outlet. This may cause a short circuit or overheating, resulting in smoke or fire.

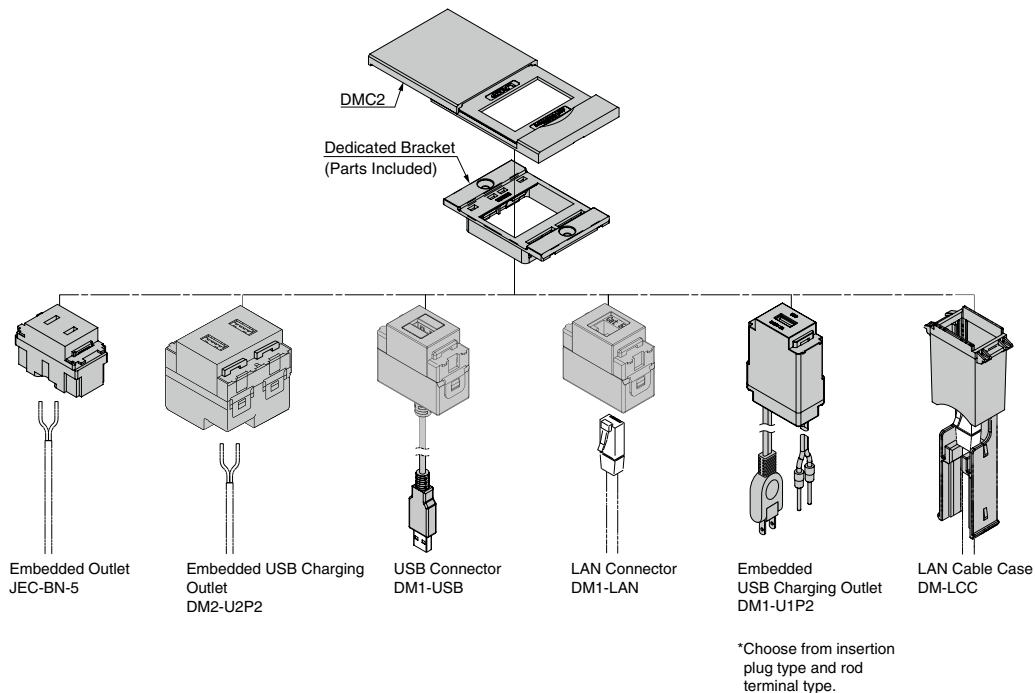
Parts Included

- Size 4 x 16 cross-recessed flat head tapping screws
- Dedicated bracket

Warning

Embedded outlets and power supplies have been built according to Japanese electrical standards. They will NOT function outside of Japan.

Sample Combination

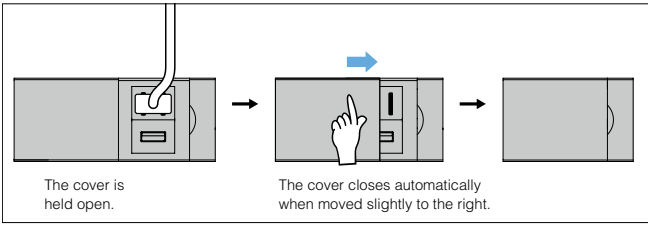


Main Body

CAD	Item Code	Item Name	Colour	Specifications	No. of Ports	Weight (g)	Box (pcs)	Carton (pcs)
	210-032-976	DMC2-MC-BL	Black	Held open	2 outlets	30	20	160
	210-032-977	DMC2-MC-WT	White				20	160
	210-032-978	DMC2-MC-BR	Brown				20	160

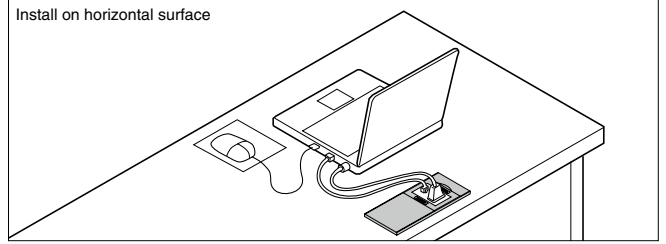
Specifications of hold-open function

Specifications of hold-open function

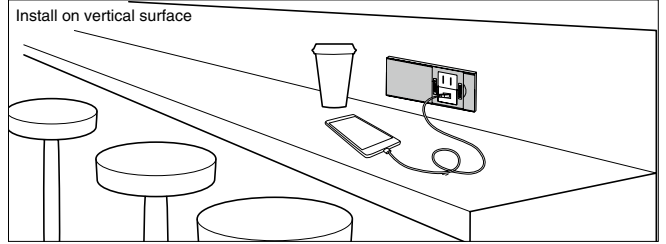


Application Example

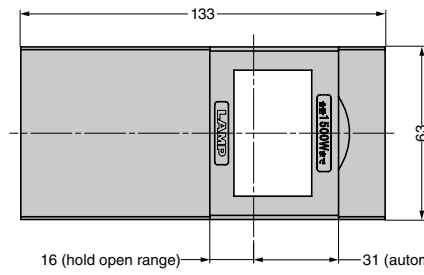
Install on horizontal surface



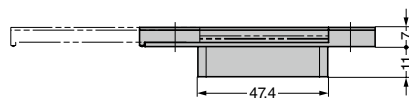
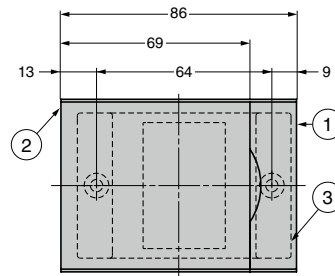
Install on vertical surface



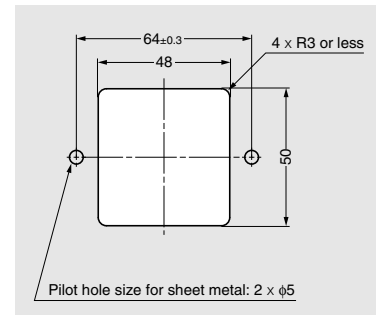
When fully open



When closed



Cut Out Dimensions



*The dimensional tolerance for installation holes drilled in sheet metal is ±0.3.

No.	Part Name	Material	Finish	Colour
①	Cover Body	PBT	Blast	Black/White/Brown
②	Sliding Cover	Resin	Finish	
③	Dedicated Bracket	PPE Resin	-	Black