

OUTLET COVER (DOUBLE OPENING TYPE)

INSTRUCTION

DMC1W



Black

White

Brown

*Outlet and connector sold separately.

Features

- An outlet cover for devices and furniture. An embedded outlet, USB outlet, USB connector, LAN connector or LAN cable case (all sold separately) can be mounted to this product.
- See the Compatibility Table for details on products that can be mounted.
- Can be mounted to a horizontal or vertical surface.
- Flat, clean design with thickness of just 7 mm.
- The cover is made from PBT resin for outstanding chemical resistance.
- Comes with a self-closing cover to keep out dust.
- Choose from a type that can be held open and a type that remains closed.

Specifications

Operating temperature: -10°C - +40°C

Application

Airport lounges, hotel lobbies, hotel rooms, cafés, locker rooms, office furniture

Remarks

- Sockets with protruding parts such as switches or phone cable modules cannot be mounted.
- The outlet must be installed by a qualified electrician.
- Do not allow water or dust to enter the plug insertion part of the outlet. This may cause a short circuit or overheating, resulting in smoke or fire.

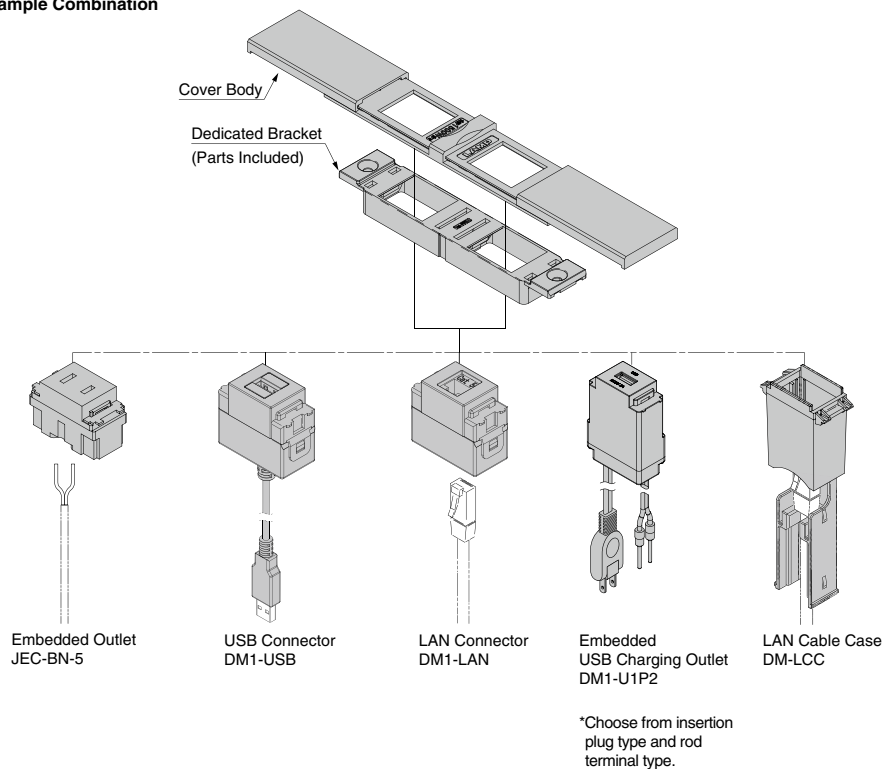
Parts Included

- Size 4 x 16 cross-recessed flat head tapping screws (stainless steel)
- Dedicated bracket

Warning

Embedded outlets and power supplies have been built according to Japanese electrical standards. They will NOT function outside of Japan.

Sample Combination



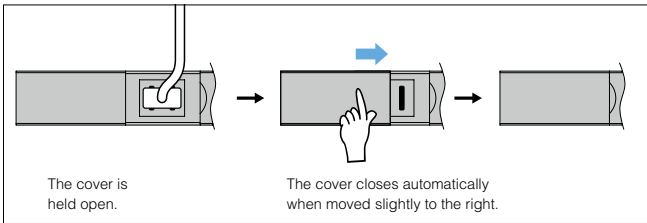
*Choose from insertion plug type and rod terminal type.

Main Body

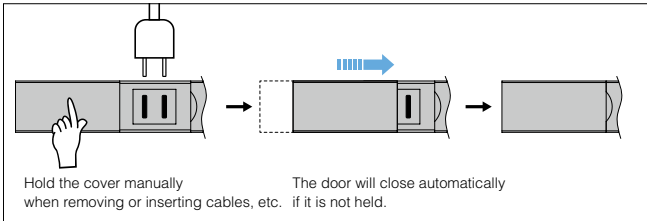
CAD	Item Code	Item Name	Colour	Specifications	No. of Ports	Weight (g)	Box (pcs)	Carton (pcs)
	210-035-881	DMC1W-MC-BL	Black	Held open	1 outlet/2 stations	30	20	160
	210-035-882	DMC1W-MC-WT	White				20	160
	210-035-883	DMC1W-MC-BR	Brown				20	160
	210-035-884	DMC1W-AC-BL	Black	Remaining closed			20	160
	210-035-885	DMC1W-AC-WT	White				20	160
	210-035-886	DMC1W-AC-BR	Brown				20	160

Specifications of hold-open and keep-closed functions

Specifications of hold-open function

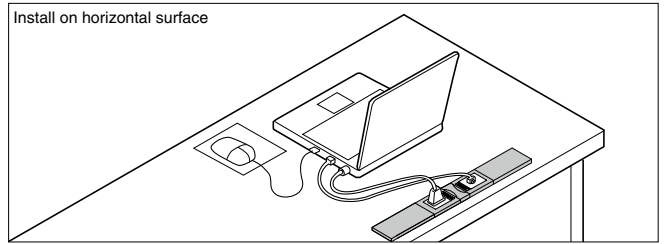


Specifications of keep-closed function

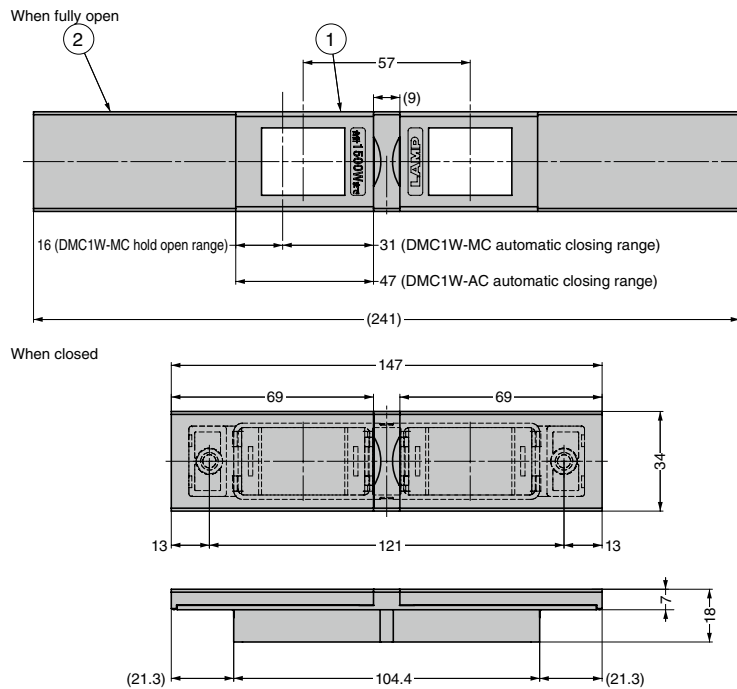
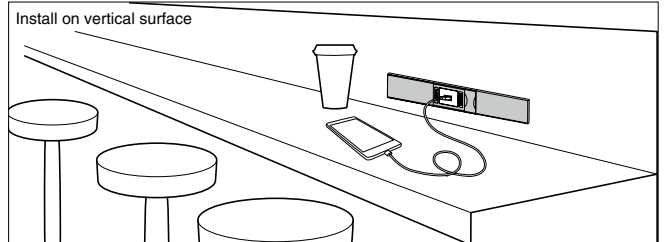


Application Example

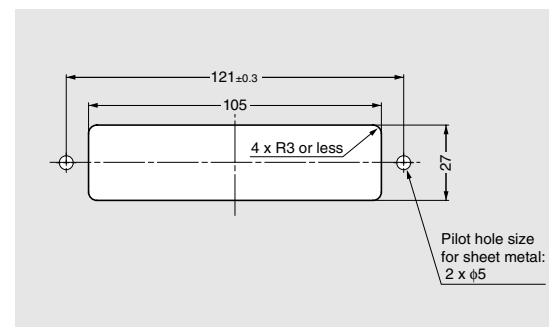
Install on horizontal surface



Install on vertical surface



Cut Out Dimensions



*The dimensional tolerance for installation holes drilled in sheet metal is ± 0.3 .

No.	Part Name	Material	Finish	Colour
①	Cover Body	PBT	Blast	Black/White/Brown
②	Sliding Cover	Resin	Finish	
③	Dedicated Bracket	PPE Resin	-	Black