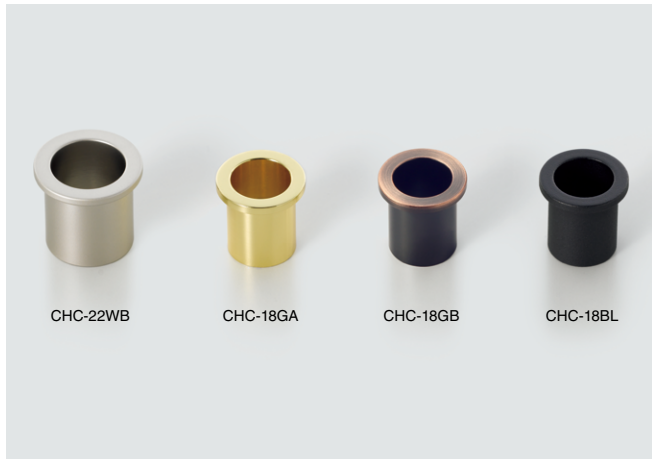


CABLE GROMMET

CHC

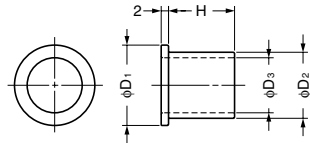


CHC-22WB CHC-18GA CHC-18GB CHC-18BL

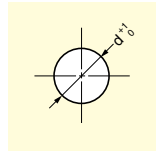
Black colour also available.

Features

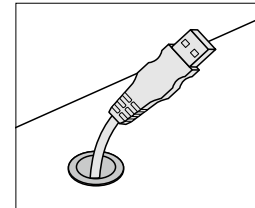
- Two sizes of diameter available.
- Suitable for phone, fax or LAN cable grommet.



Cut Out Dimensions



Application



MISCELLANEOUS

CABLE GROMMET

Item Code	Item Name	Material	Finish/Colour	H	D ₁	D ₂	D ₃	d	Weight	Box
210-023-209	CHC-18WB	Brass	Satin Nickel	16	18	14	12	14.5	8 g	120 pcs
210-017-186	CHC-18GA	Brass	Gold	16	18	14	12	14.5	8 g	120 pcs
210-017-187	CHC-18GB	Brass	Antique Brass	16	18	14	12	14.5	8 g	120 pcs
210-029-804	CHC-18BL	Brass	Black	16	18	14	12	14.5	8 g	120 pcs
210-023-210	CHC-22WB	Brass	Satin Nickel	18	22	18	15	18.5	15 g	60 pcs
210-017-189	CHC-22GA	Brass	Gold	18	22	18	15	18.5	15 g	60 pcs
210-017-190	CHC-22GB	Brass	Antique Brass	18	22	18	15	18.5	15 g	60 pcs
210-029-805	CHC-22BL	Brass	Black	18	22	18	15	18.5	15 g	60 pcs

SPLIT CABLE GROMMET CHC-S



CHC-S18DN CHC-S18GC CHC-S22DB CHC-S26BL

- Can be split into two parts for easy cable replacement. Even when exchanging with cables which have bigger plugs than the grommet, there is no need to take apart them.
- Non-split model (CHC) is also available.

[Cable Diameter]

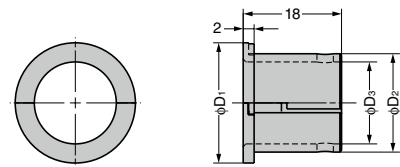
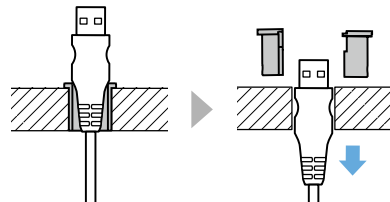
- CHC-S18: 12 to 14 mm (LAN cable and RJ45 connector)
- CHC-S22: 15 to 18 mm (USB cable)
- CHC-S26: 18 to 22 mm (HDMI cable)
- *Please check with actual cables before use.

[Remarks]

- Note that scratches on the black type may become conspicuous. Please handle it with care during installation.
- Do not change the combination of the split parts.



[Split System] Easy to replace cables.



RoHS	CAD	Item Code	Item Name	Material	Finish/Colour	D1	D2	D3	d	Weight (g)	Box (pcs)	Carton (pcs)
●	●	210-028-378	CHC-S18DN	Zinc Alloy (ZDC)	Nickel	18	14	12	14	6	100	400
●	●	210-028-379	CHC-S18GC		Gold Plating						100	400
●	●	210-028-380	CHC-S18DB		Antique Brass						100	400
●	●	210-029-799	CHC-S18BL		Black						100	400
●	●	210-045-356	CHC-S22DN		Nickel	22	18	15	18	10	100	400
●	●	210-045-357	CHC-S22GC		Gold Plating						100	400
●	●	210-045-358	CHC-S22DB		Antique Brass						100	400
●	●	210-045-359	CHC-S22BL		Black						100	400
●	●	210-045-360	CHC-S26DN		Nickel	26	22	18	22	16	100	400
●	●	210-045-361	CHC-S26GC		Gold Plating						100	400
●	●	210-045-362	CHC-S26DB		Antique Brass						100	400
●	●	210-045-363	CHC-S26BL		Black						100	400

[Cut Out Dimension]

