

# CABLE GROMMET ALU25

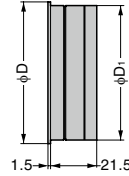
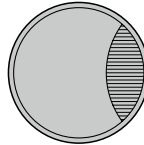


● Square type cable grommet with brush also available.

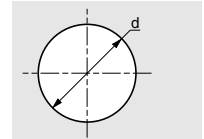
**[Remarks]**

● Be sure to read the "Cautions" **1**.

**[Application]**



**[Cut Out Dimensions]**



RoHS	CAD	Item Code	Item Name	Finish / Colour	Material	D	D <sub>1</sub>	d	Weight (g)	Box (pcs)	Carton (pcs)
-	SD	210-030-162	ALU25-20-325	Anodised Silver/Black	Aluminium Alloy/PA	66	60	60	45.0	240	-
-	SD	210-030-163	ALU25-20-330			86	80	80	79.4	240	-

Refer to **1** : P843

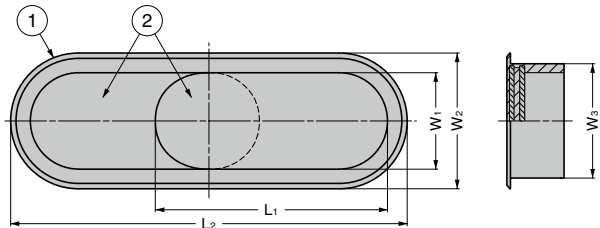
# CABLE GROMMET SALSA



● With sliding type cover for opening adjustment.

**[Remarks]**

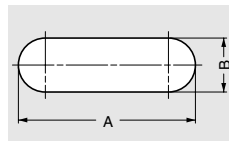
● Be sure to read the "Cautions" **1**.



**[Application]**



**[Cut Out Dimensions]**



No.	Part Name	Material	Finish / Colour
①	Body	PE※	Black
②	Cover	Stainless Steel	Satin

※ ABS resin for SI2520-316. As soon as the stock runs out, PE will be used.

RoHS	CAD	Item Code	Item Name	L <sub>1</sub>	L <sub>2</sub>	L <sub>3</sub>	W <sub>1</sub>	W <sub>2</sub>	W <sub>3</sub>	A	B	Weight (g)	Box (pcs)	Carton (pcs)
SD	SD	210-031-473	SI2520	65	111	105	27	38	32	105	32	35	20	200
SD	SD	210-019-742	SI2520-315	102	155	149	55	63	57	149	57	86	20	100
SD	SD	210-019-743	SI2520-316	152	255	249				249	134	20	100	

Refer to **1** : P843