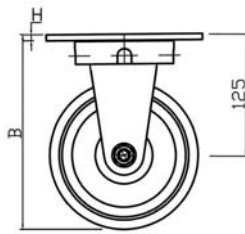
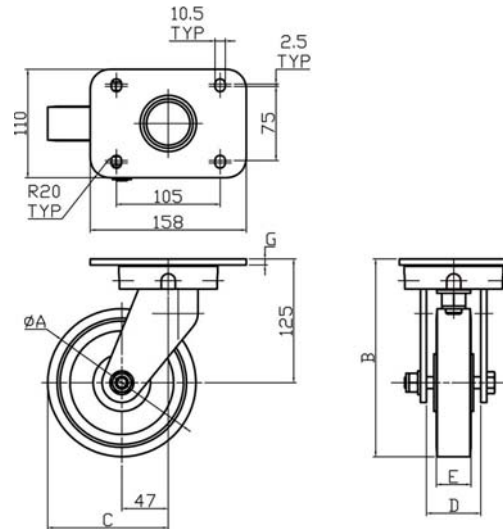


SWIVEL



FIXED

Top plates have fixing holes to suit 10mm diameter bolts

(G) Swivel top plate thickness 6mm

(H) Fixed top plate thickness 6mm

FOR TECHNICAL INFORMATION COVERING LOAD FACTORS, ETC., SEE 'DESIGN DATA' INDEX ON PAGE 20

A	B	C	D	E			▽ Swivel		▽ Fixed	
Wheel Diameter	Overall Height	Swivel Radius	Dim. between Horn Plates	Tread Width	Max Load Rating kg	Wheel Bearing Type	PART NUMBER	Approx Weight kg	PART NUMBER	Approx Weight kg
POLYURETHANE TYRED WHEEL										
150	200	122	55	35	600	Ball Journal	LGS/H150/35BJ	8	LGF/H150/35BJ	8
125	187.5	110	55	45	600	Ball Journal	LGS/H125/45BJ	7	LGF/H125/45BJ	7
125	187.5	110	55	30	400	Ball Journal	LGS/H125/30BJ	7	LGF/H125/30BJ	7

NOTE: Also available with other wheel types.

Wheel locks and directional locks are available on WG series swivel castors.

To order, add the appropriate suffix(es) to the castor part number: W = wheel lock D = directional lock.