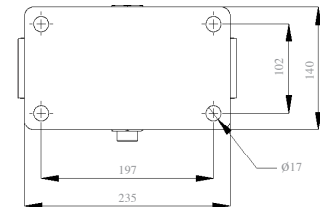
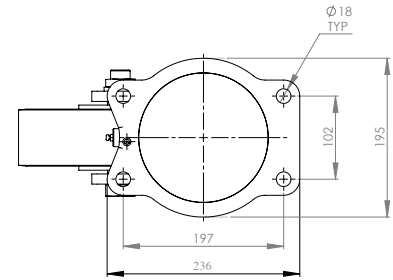


SERIES TS WHEEL SWIVEL & TF FIXED CASTORS

Load Capacity: up to 2,300kg

Brauer 'T' Series Single Wheel Castors are designed for use in adverse conditions with heavy loading, uneven floor conditions and for shock loading, using 'Heavithane' Polyurethane tyred wheels on a cast iron centre. 'Heavithane' Tyres offer comparatively low tractive effort, low noise, high wear resistance and running surface preservation.

Effective Temperature Range: -20° to +60°
Alternative Steel and Nylon wheel options available.



| Wheel Diameter (mm) | Tread Width (mm) | Wheel Type | Bearing Type | Overall Height | Offset (mm) | Load Capacity (Kg) | Mounting Hole centres to suit 16mm bolt | Swivel Castor PART NUMBER | Weight Swivel (Kg) | Fixed Castor PART NUMBER | Weight Fixed (Kg) |
|---------------------|------------------|---------------|--------------|----------------|-------------|--------------------|---|---------------------------|--------------------|--------------------------|-------------------|
| 200 | 75 | H200/75/TBM25 | Taper Roller | 252 | 205 | 1750 | 197 x 102 | TS/H200/75TB | 26.8 | TF/H200/75TB | 19.5 |
| 250 | 70 | H250/70/TBM25 | Taper Roller | 303 | 230 | 2000 | 197 x 102 | TS/H250/70TB | 24.9 | TF/H250/70TB | 17.6 |
| 300 | 75 | H300/75/TBM25 | Taper Roller | 354 | 254 | 2300 | 197 x 102 | TS/H300/75TB | 29.4 | TF/H300/75TB | 22.1 |

- Overall height is increased by 37mm if directional lock is used.
- Maximum towing speed 6KPH.