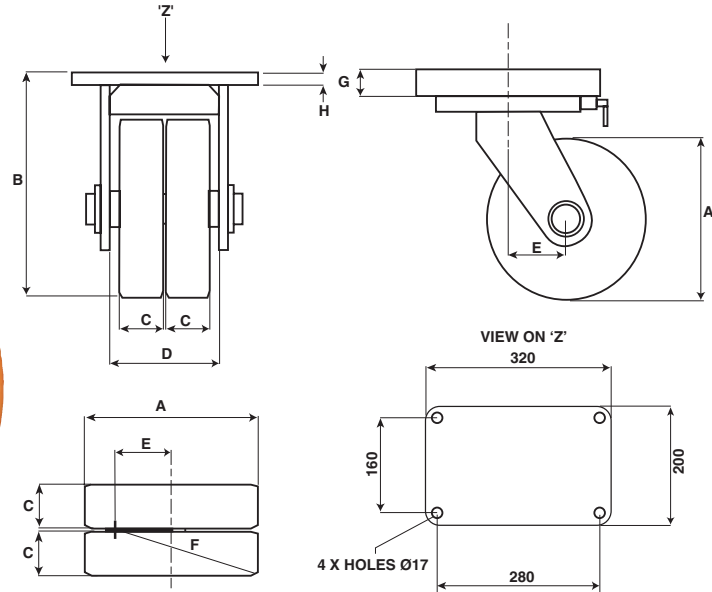


TQZ Series Swivel load rating 5100kg



WITH A VARIETY OF WHEEL OPTIONS (SEE TABLE BELOW)



TWIN WHEEL SWIVEL

Note: Direct Bond Polyurethane Wheel shown

Top plates have fixing holes to suit 16mm diameter bolts

Swivel top plate thickness 45mm (G)

Fixed top plate thickness 20mm (H)

FOR TECHNICAL INFORMATION COVERING LOAD FACTORS, ETC., SEE 'DESIGN DATA' INDEX ON PAGE 20

A	B	C	D	E	F			Swivel		Fixed	
Wheel Diameter	Overall Height	Tread Width	Dim. between Horn Plates	Wheel Centre Off-set	Swivel Radius	Max Load Rating	Wheel Bearing Type	PART NUMBER	Approx Weight kg	PART NUMBER	Approx Weight kg
DIRECT BOND POLYURETHANE TYRED TWIN WHEEL											
250	355	70	190	85	222	4000	Tapered Roller	TQZS/H250/70TB	67	TQZF/H250/70TB	46
300	405	75	190	100	262	4600	Tapered Roller	TQZS/H300/75TB	76	TQZF/H300/75TB	55
POLYURETHANE TYRED 'PRESS-ON BAND' TWIN WHEEL											
250	355	75	190	85	224	4000	Tapered Roller	TQZS/PH250/75TB	83	TQZF/PH250/75TB	62
300	405	75	190	100	260	5000	Tapered Roller	TQZS/PH300/75TB	100	TQZF/PH300/75TB	79
STEEL WHEEL											
200	330	90	110	85	195	5100	Tapered Roller	TQZS/SFT200/90TB	66	TQZF/SFT200/90TB	55

TQZ SERIES CASTORS

Directional locks are standard on TQZS series castors.

NOTE: Also available with other wheel types.