

## STAINLESS STEEL SLIDING DOOR HANDLE

STAINLESS  
304  
STEEL

DSI-4251

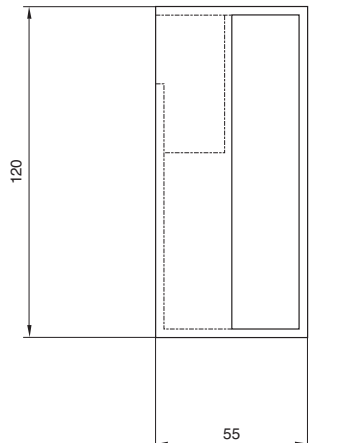
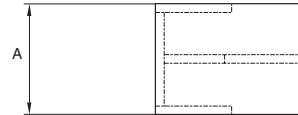


### Features

- Contemporary handle design that can be accessed from door front, back, or edge.
- Requires adhesive for installation. (Such as 2-part epoxy, not supplied.)

### Remarks

- Made to order. Minimum quantity 20 pieces.



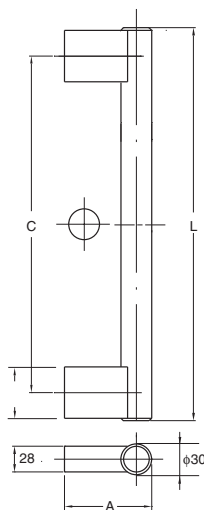
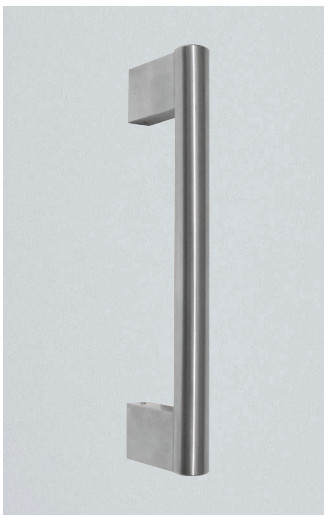
Item Code	Item Name	A	Weight	Box	Carton
-	DSI-4251-35	35	490 g	1 pc	10 pcs
-	DSI-4251-38	38	515 g		
-	DSI-4251-40	40	530 g		
-	DSI-4251-43	43	550 g		
-	DSI-4251-45	44.5	570 g		
-	DSI-4251-50	50	590 g		

Material	Finish
304 Stainless Steel	Satin

## STAINLESS STEEL DOOR HANDLE

STAINLESS  
304  
STEEL

DSI-3330



### Features

- For use with DSI mounting kits (Sold separately, P.108).
- Please specify Interior/Exterior type when ordering:
  - Posts for Exterior handles are threaded to accept screws.
  - Posts for Interior handles have set screws for DSI mounting kits.
- Similar style to I1020 cabinet handles (P.29).

### Remarks

- Made to order.
- Minimum quantity 20 pieces.

Material	Finish
304 Stainless Steel	Satin

Item Code		Item Name		L	C	A	Weight		Box	Carton
Interior	Exterior	Interior	Exterior				Interior	Exterior		
-	-	DSI-3330-30-30I	DSI-3330-30-30E	320	300	90	1.48 kg	1.56 kg	1 pc	10 pcs
-	-	DSI-3330-30-50I	DSI-3330-30-50E	520	500		1.70 kg	1.70 kg		