

HIDDEN TORQUE HINGE



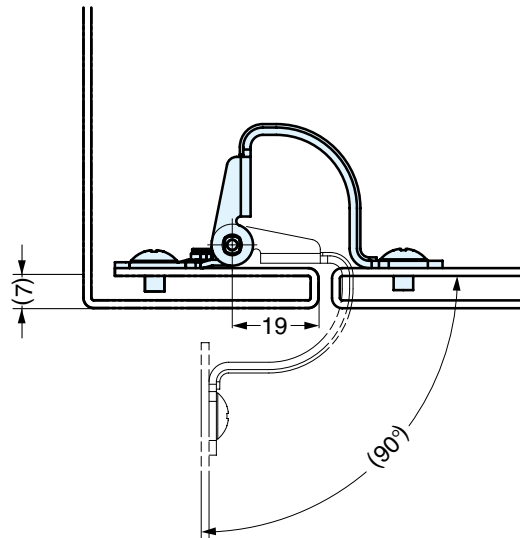
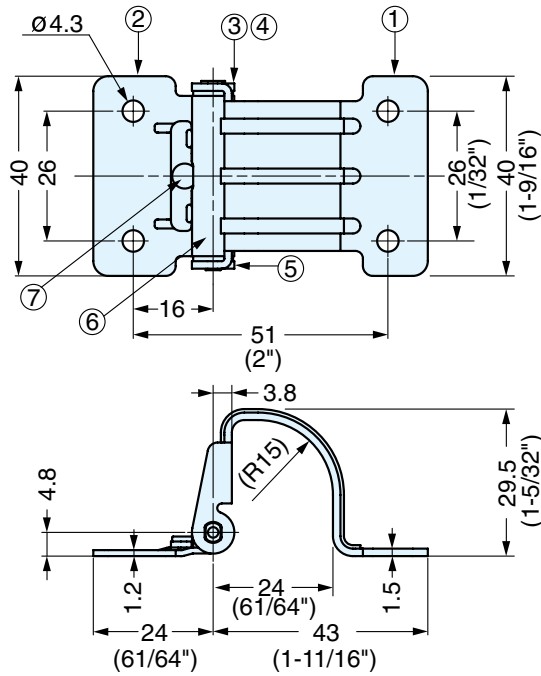
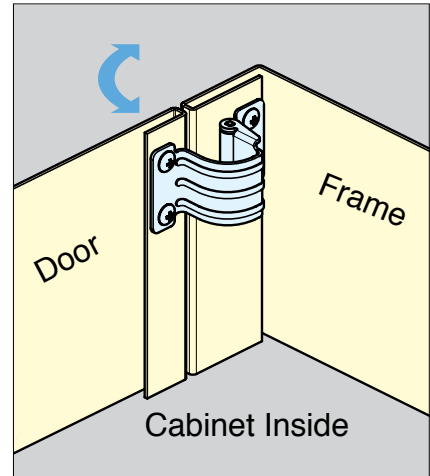
HG-TU



- Installation on the back side of the door.
- Can be used both for horizontal and vertical applications.

Note:

- Initial torque may vary -20%~+40%.
- Do not lubricate.
- For indoor use only.



Item No.	Torque per piece (kgf-cm)	Weight (g)	Box (pcs)	Carton (pcs)
HG-TU03	3.6 (3.1 lbs-in)	50	20	200
HG-TU07	7.1 (6.2 lbs-in)			

No	Part Name	Material	Finish
①	Body	430 Stainless Steel	Polished
②	Base		
③	Fixing Tube	Polyacetal	Black
④	Fixing Tube		
⑤	Shaft	303 Stainless Steel	-
⑥	Press Washer	430 Stainless Steel	Polished
⑦	Pin		-