

SLD

VERTICAL SWING DOWN MECHANISM



- Unique swing down mechanism provides a lift-assist feature to help open/close the doors easily & softly.
- Holds the door at the open position.
- Sleek, compact design provides maximum access.
- Easy installation.
- Adjustable arm mounting plate.
- Successfully passed for 30,000 open/close private cycle tests.

Designed to operate at room temperature
0°~40°C (32°~104°F).



VERTICAL SWING DOWN MECHANISM



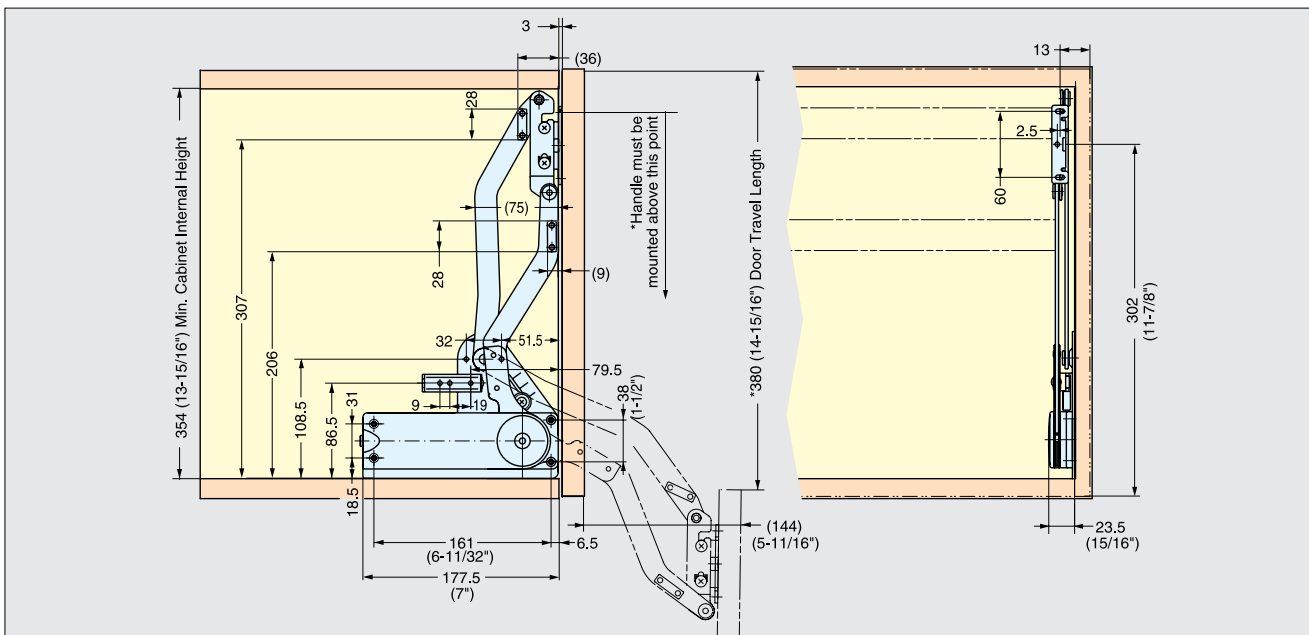
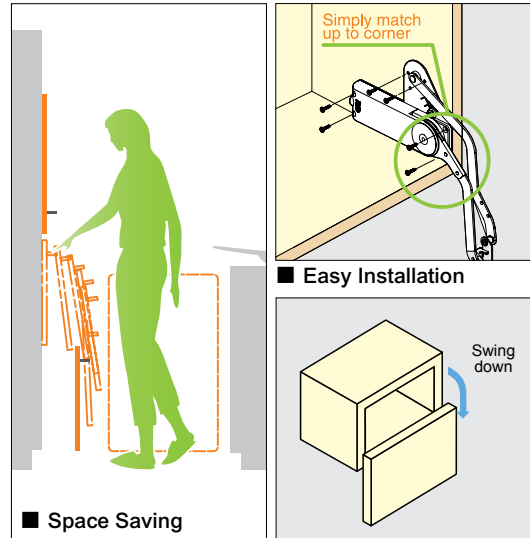
SLD

LID SUPPORTS

VERTICAL SWING DOWN MECHANISM



- Unique swing down mechanism will hold doors at the open position.
- Sleek & compact design.
- Easy installation.
- Adjustable arm mounting plate.
- Patented LAPCON technology provides a smooth and quiet motion.
- Successfully passed 30,000 open/close private cycle tests.
- Recommended Door Size and Weight:
 - Width, 600~900 mm (23-5/8"~35-7/16")
 - Height, 360~400 mm (14-1/8"~15-3/4")
 - Weight, 3~6 kg (6.6~13.2 lbs)



| Material | Finish/Color |
|----------|--------------|
| Steel | Nickel |
| Plastic | Grey |

| Item No | Door Weight (kg) | Box (set) | Carton (set) |
|---------|-----------------------|-----------|--------------|
| SLD-3 | 3~4 (6.6~8.8 lbs) | 5 | 50 |
| SLD-4 | 4~5 (8.8~11.0 lbs) | | |
| SLD-5 | 5~6 (11.0~13.2 lbs) | | |

Guide Bar Length

| Door Type | Cabinet Width (mm) | |
|-----------------|--------------------|------------------|
| | 600 (23-5/8") | 900 (35-7/16") |
| Solid Wood Door | 535 (21-1/16") | 835 (32-7/8") |
| Frame Door | 551 (21-3/4") | 851 (33-1/2") |

*SLUB-835 (835 mm (32-7/8")) included unless specified.