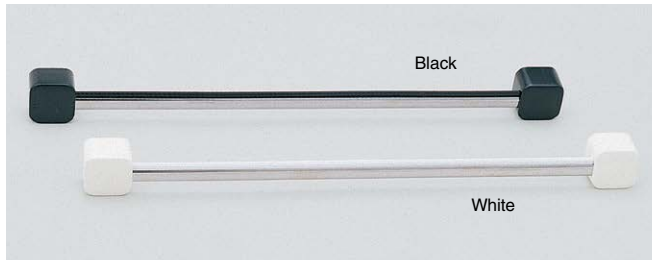


TIE RACK

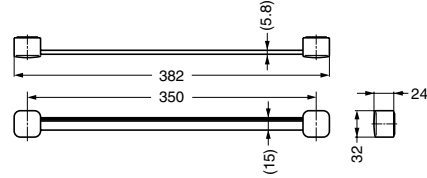


S-350



Parts Included

- Truss head tapping screw 3 × 16



Item Code	Item Name	Material	Colour/Finish	Weight	Box	Carton
110-020-118	S-350W	ABS/Stainless Steel (SUS304)	White/Polished	80 g	10 pcs	100 pcs
110-020-119	S-350B	ABS/Stainless Steel (SUS304)	Black/Polished	80 g	10 pcs	100 pcs

TIE RACK

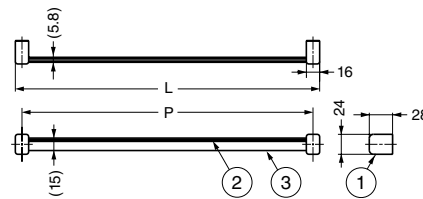


STR

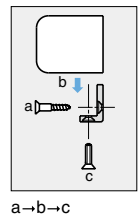


Parts Included

- Round head wood screw 3.1 × 16 (Chromate)
- Countersunk head screw M3 × 8 (Chrome)



Installation



Item Code	Item Name	L	P	Weight	Box	Carton
110-020-244	STR-300	316	300	160 g	10 pcs	60 pcs
110-020-245	STR-350	366	350	170 g	10 pcs	60 pcs
110-020-246	STR-400	416	400	180 g	10 pcs	60 pcs
110-020-153	STR-450	466	450	190 g	10 pcs	60 pcs

No.	Material	Finish/Colour
①	Zinc Alloy (ZDC)	Chrome
②	Vinyl Chloride Resin (PVC)	Black
③	Stainless Steel (SUS304)	Mirror

TIE RACK

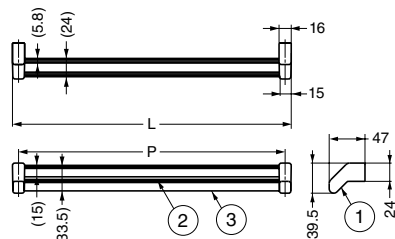


DTR

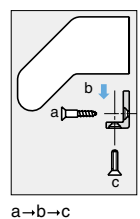


Parts Included

- Round head wood screw 3.1 × 16 (Chromate)
- Countersunk head screw M3 × 8 (Chrome)



Installation



Item Code	Item Name	L	P	Weight	Box	Carton
110-020-154	DTR-350	366	350	250 g	5 pcs	30 pcs
110-020-155	DTR-400	416	400	270 g	5 pcs	30 pcs
110-020-156	DTR-450	466	450	285 g	5 pcs	30 pcs

No.	Material	Finish/Colour
①	Zinc Alloy (ZDC)	Chrome
②	Vinyl Chloride Resin (PVC)	Black
③	Stainless Steel (SUS304)	Mirror