

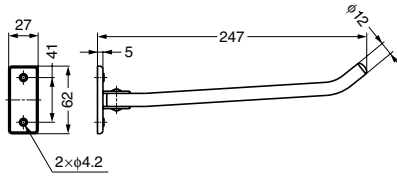
## SWINGING HANGER

TEST METHOD 4

STAINLESS 304 STEEL

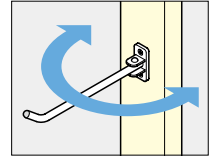
STAINLESS

## HM-250V



### Parts Included

Raised countersunk head wood screw 3.5x20 (SUS)



Item Code	Item Name	Material	Finish	Load Capacity	Weight	Box	Carton
110-020-086	HM-250V	Stainless Steel (SUS304)/EPDM	Satin	29.4 N	3 kgf	120 g	10 pcs

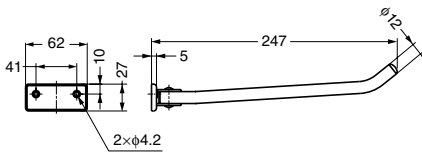
## SWINGING HANGER

TEST METHOD 4

STAINLESS 304 STEEL

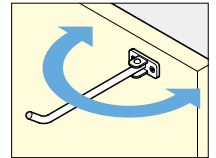
STAINLESS

## HM-250Y



### Parts Included

Raised countersunk head wood screw 3.5x20 (SUS)



Item Code	Item Name	Material	Finish	Load Capacity	Weight	Box	Carton
110-020-088	HM-250Y	Stainless Steel (SUS304)/EPDM	Satin	29.4 N	3 kgf	136 g	10 pcs

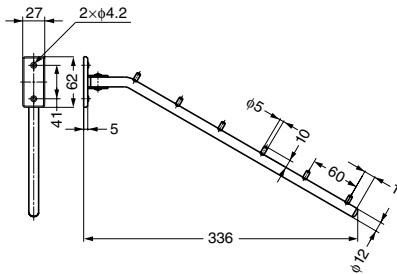
## SWINGING HANGER

TEST METHOD 4

STAINLESS 304 STEEL

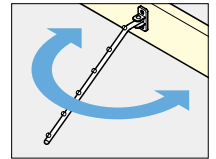
STAINLESS

## HM-330



### Parts Included

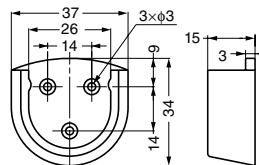
Raised countersunk head wood screw 3.5x20 (SUS)



Item Code	Item Name	Material	Finish	Load Capacity	Weight	Box	Carton
110-020-089	HM-330	Stainless Steel (SUS304)/EPDM	Satin	29.4 N	3 kgf	190 g	10 pcs

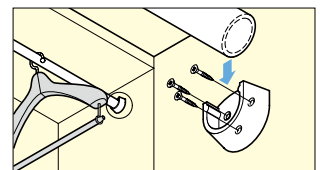
## PLASTIC SOCKET

## PS-37



### Features

Ideal for holding pipes in wardrobes.



Item Code	Item Name	Material	Colour	Load Capacity	Weight	Box	Carton
110-030-118	PS-37	Polystyrene	White	196 N/2 pcs	20 kgf/2 pcs	8 g	100 pcs

WARDROBE & CABINET DOOR HARDWARE

SWINGING HANGER / PLASTIC SOCKET