

HEAVY DUTY EXTENSION HANGER

TEST METHOD 5



SH740

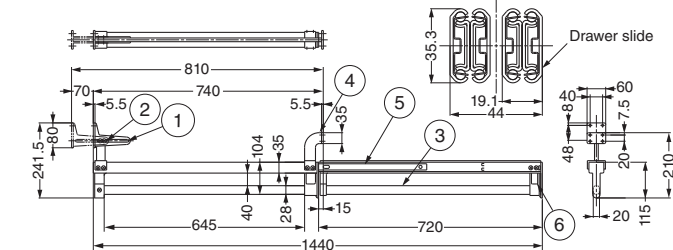
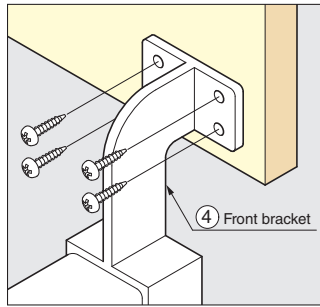
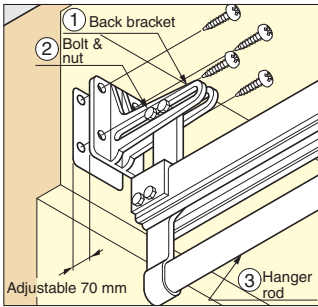


Features

- Space-saving, undermount design for narrow spaces.
- Drawer slide allows smooth movement.
- Back mounting bracket can be adjusted for shorter /longer spaces (70 mm).

Parts Included

Round head wood screws 4.5x20



No.	Part Name	Material	Finish
①	Back Bracket	Brass	Chrome
②	Bolt-Nut	Steel	Chrome
③	Hanger Rod	Steel	Chrome
④	Front Bracket	Brass	Chrome
⑤	Drawer Slide	Steel	Chrome
⑥	Knob	Brass	Chrome

Item Code	Item Name	Length	Load Capacity	Weight	Box	Carton
110-020-146	SH740	740 - 810	401.8 N / 41 kgf	6.1 kg	1 pc	2 pcs

WARDROBE & CABINET DOOR HARDWARE

HANGER BRACKET

TEST METHOD 4



CK



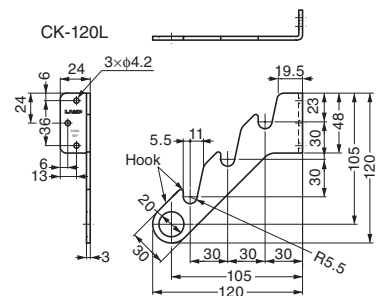
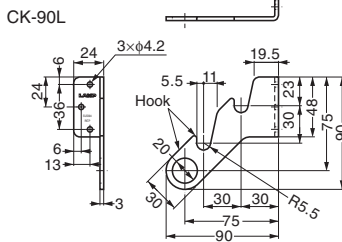
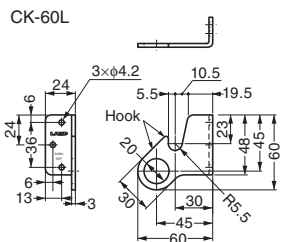
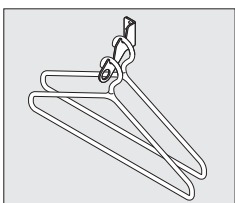
Features

Light duty hanger brackets for garments, umbrellas, etc.

Parts Included

Truss tapping screw 4x20

EXTENSION HANGER / HANGER BRACKET



Item Code	Item Name	Material	Finish	Load Capacity/position	Weight	Box	Carton
110-020-260	CK- 60L	Stainless Steel (SUS304)	Satin	14.7 N / 1.5 kgf	66 g	15 pcs	150 pcs
110-020-261	CK- 90L	Stainless Steel (SUS304)	Satin	14.7 N / 1.5 kgf	90 g	15 pcs	150 pcs
110-020-262	CK-120L	Stainless Steel (SUS304)	Satin	14.7 N / 1.5 kgf	113 g	10 pcs	100 pcs