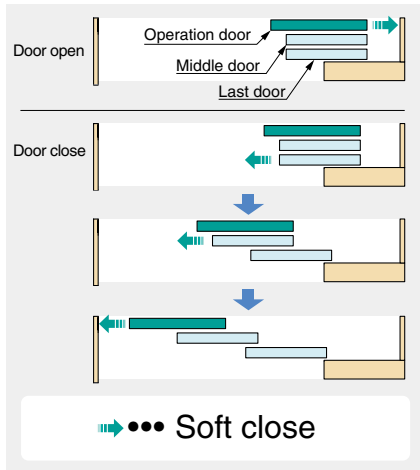


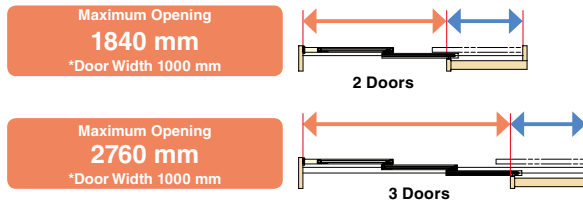
MULTIPLE SYNCHRONIZED SLIDING DOOR SYSTEM

FD30-HRP



2 or 3 Doors Synchronized Sliding Style	
Door Weight	Max. 30 kg/Door
Door Thickness	30 - 38 mm
Door Width	590 - 1000 mm
Height Adjustment	-3/+4 mm
Side Adjustment	±2 mm

Maximum Opening Clearance



ARCHITECTURAL DOOR HARDWARE

MULTIPLE SYNCHRONIZED SLIDING DOOR SYSTEM

**Parts Set Necessary Parts**  
Please refer to "Qty a - b" for parts included in each set.

Item Code	Item Name	Description	
		Roller	Function
a 250-022-267	FD30-HRP2	Recessed	2Doors Synchronized
b 250-022-268	FD30-HRP3	Recessed	3Doors Synchronized

Parts Included

No.	Qty		Part Name	Dimensions	Description
	a	b			
1	1 pc	1 pc	Recessed-Roller Soft-Closer (Two-Way)		Item Code : 250-030-386 Item Name : FD30-WRH-DSC • Material Zinc Alloy / Polyacetal • Finish Yellow Zinc Chromate / Light Brown
2	1 pc	2 pcs	Recessed-Roller Soft-Closer (One-Way)		Item Code : 250-029-937 Item Name : FD30-WRH-SC • Material Zinc Alloy / Polyacetal • Finish Yellow Zinc Chromate / Light Brown
3	2 pcs	3 pcs	Recessed-Roller		Item Code : 250-020-837 Item Name : FD30-WRH-N • Material Zinc Alloy / Polyacetal • Finish Yellow Zinc Chromate / Light Brown
4	* pcs	* pcs	Trigger-Pin		Item Code : 250-019-967 Item Name : FD30-TRG • Material Steel • Finish Yellow Zinc Chromate *1 pc is included in 1.
5	1 set	2 sets	End Stopper		Item Code : 250-022-261 Item Name : FD30-HRGU • Material SUS 304 / POM • Finish Grey / Plain
6	1 pc	2 pcs	Door Guide (Door Mount)		Item Code : 250-022-262 Item Name : FD30-HRDG • Material SUS 304 / POM • Finish Grey / Plain

No.	Qty		Part Name	Dimensions	Description
	a	b			
7	1 pc	1 pc	Door Guide (Wall Mount)		Item Code : 250-022-263 Item Name : FD30-HBGF • Material SUS 304 / POM • Finish Grey / Plain
8	1 pc	1 pc	Block for Bottom Guide		Item Code : 250-022-264 Item Name : FD30-HRDB • Material EPDM • Finish Black
9	1 pc	2 pcs	Bumper Block		Item Code : 250-022-265 Item Name : FD30-HBB • Material Steel / EPDM • Finish Chromate / Black
10	2 pcs	3 pcs	Guide Track		Item Code : 250-022-266 Item Name : FD30-HBDR1000 • Material ABS • Finish Black

Cover Cap Necessary Parts

No.	Item Code	Part Name	Dimensions	Description
11	250-018-785	Cover Cap		• Material Polypropylene • Finish WT=White CP=Light Brown DB=Dark Brown
	FD30-WRH-CP-WT			
	250-017-138			
	FD30-WRH-CP-LBR			
11	250-018-786	Cover Cap		• Material Polypropylene • Finish WT=White CP=Light Brown DB=Dark Brown
	FD30-WRH-CP-DB			

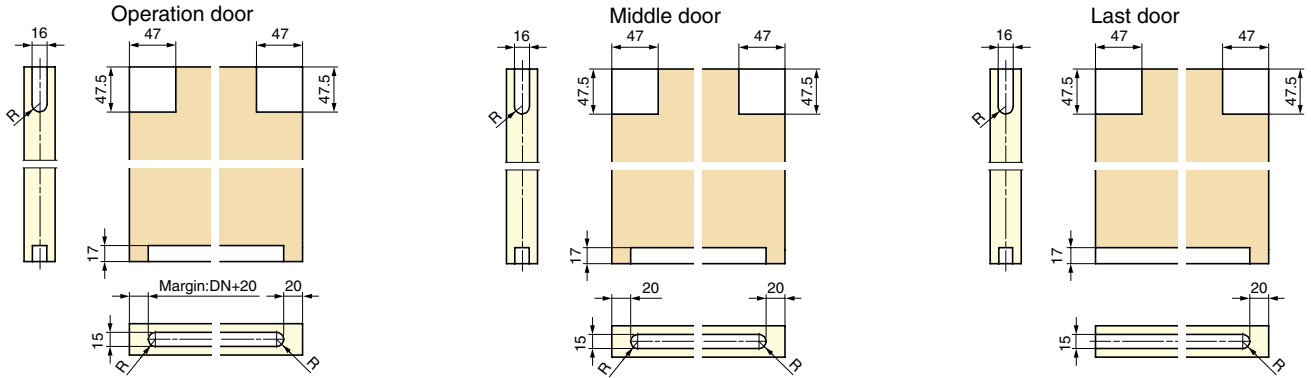
Optional Parts

No.	Item Code	Part Name	Dimensions	Description
12	250-017-157	Bottom Guide		• Material Polyamide • Finish Light Brown
	FD30-HTF			

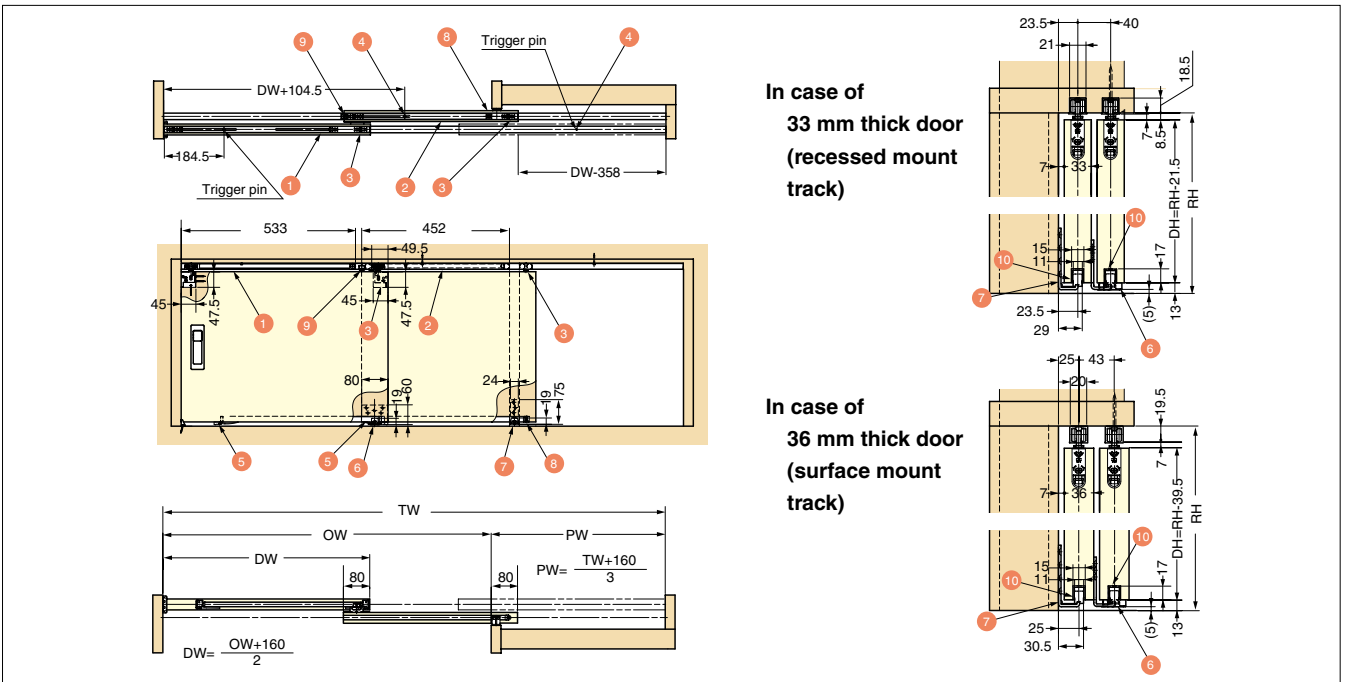
Upper Track Necessary Parts

Mounting	Length	Item Code	Dimensions	Description
Surface Mount	1820 mm	250-017-805		• Material Aluminium • Finish Anodized Silver
		FD30-TRM1820SCSIL		
	2730 mm	250-017-978		
		FD30-TRM2730SCSIL		
3640 mm	250-017-982			
	FD30-TRM3640SCSIL			
Mounting	Length	Item Code	Dimensions	Description
Recessed Mount	1820 mm	250-017-807		• Material Aluminium • Finish Anodized Silver
		FD30-TRH1820SCSIL		
	2730 mm	250-017-980		
		FD30-TRH2730SCSIL		
3640 mm	250-017-984			
	FD30-TRH3640SCSIL			

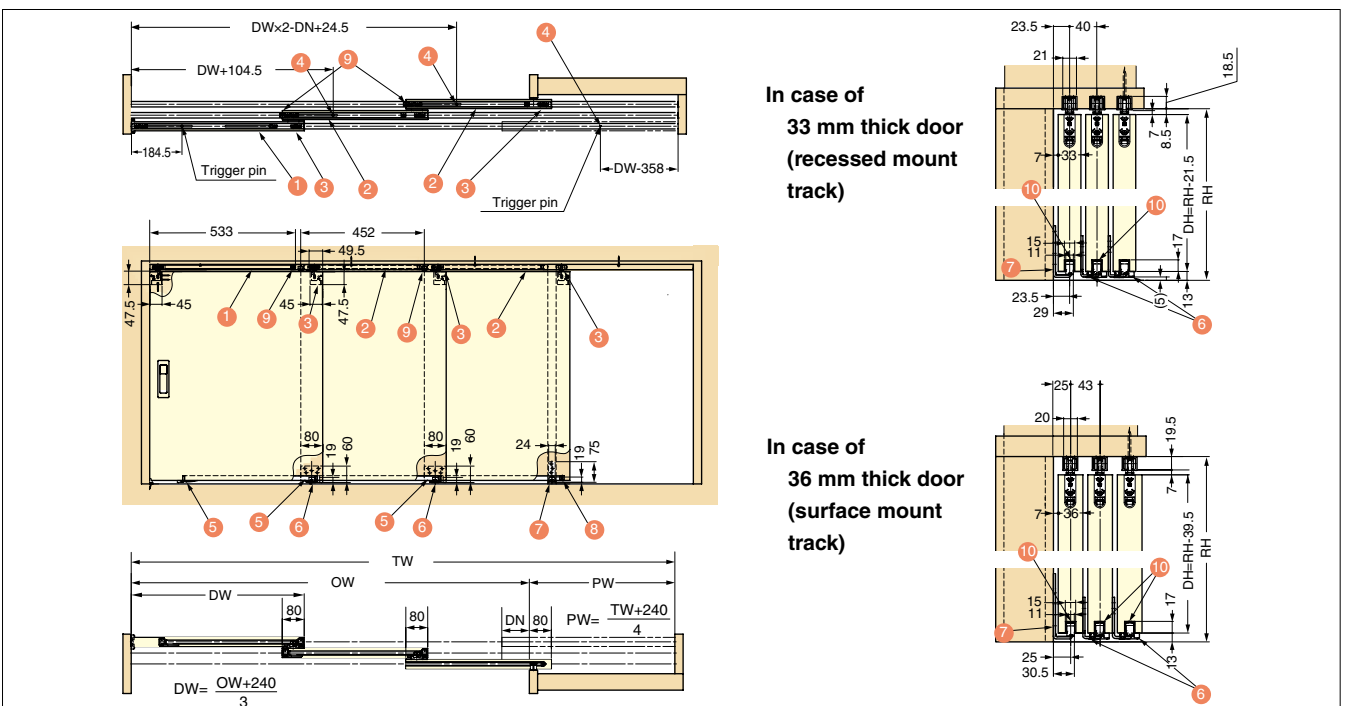
Door Preparation



**a** FD30 / Synchronized Sliding / 2 Doors



**b** FD30 / Synchronized Sliding / 3 Doors



ARCHITECTURAL  
DOOR HARDWARE

MULTIPLE SYNCHRONIZED SLIDING DOOR SYSTEM