

# SELF CLOSING SLIDE DOOR SYSTEM



LM-80



Door Weight	30-80 kg/Door
Door Thickness	28-40 mm
Door Width	700-1200 mm
Door Travel	Max. 1100 mm (In Case of Door Width 1200 mm)

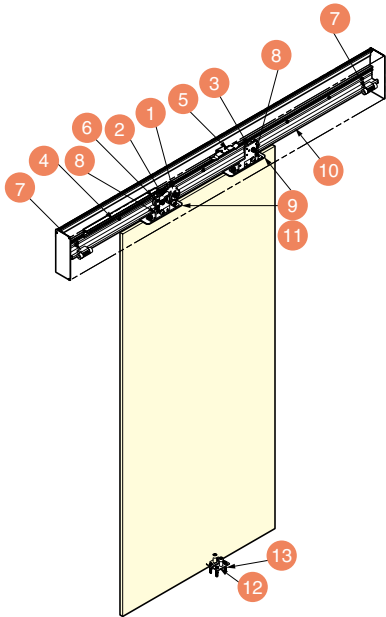
### Features

- Great solution for toilet areas and general purpose rooms.
- Self closing slide door system. No electricity required.
- Built-in damper makes closing soft and quiet, preventing slamming or injury.
- Non-handed.
- Door has smooth operation and feels light, making it easy for young children and the elderly to use the door.
- Door catch holds door in fully open position.
- Damping speed adjustable for ideal soft-closing.
- Passed 1,000,000 open and close cycles in a private test.

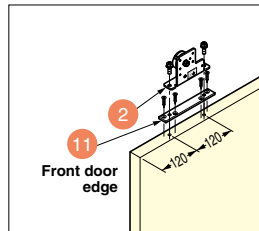
### Remarks

- Please secure enough clearance between door and rail cover.
- Rail cover for door of Max. 32 mm thickness is available upon request.

Video Link

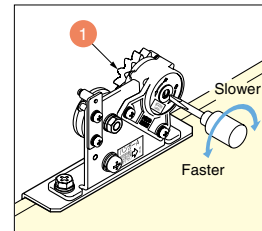


### Installation of Roller



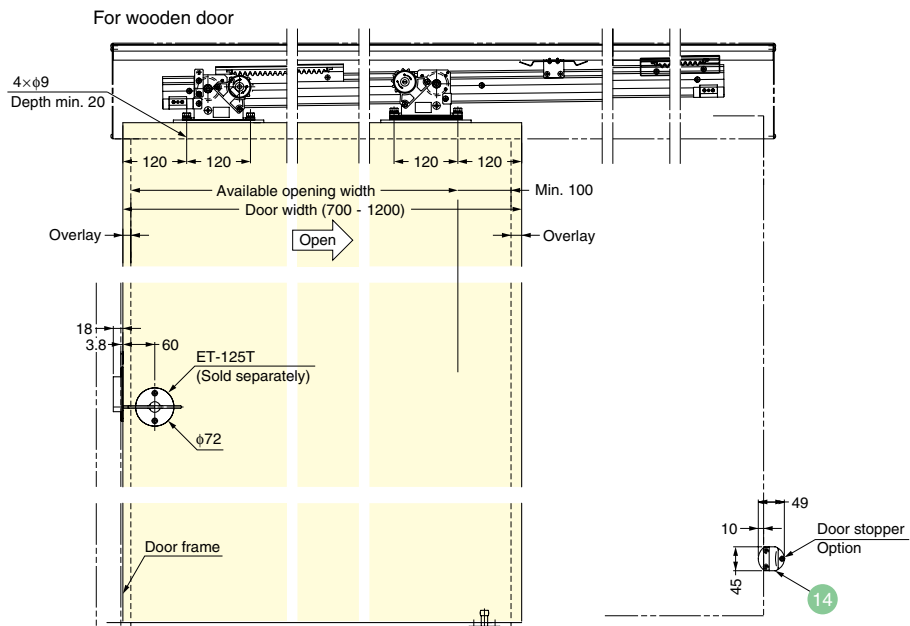
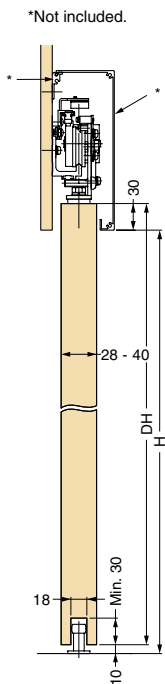
Roller brackets for solid phenolic panel and wooden door included.

### Adjustment of Closing Speed



ARCHITECTURAL DOOR HARDWARE

SELF CLOSING SLIDE DOOR SYSTEM



**Parts Set (Per Door)** **Necessary Parts**

Item Code	Item Name
250-010-613	LM-80

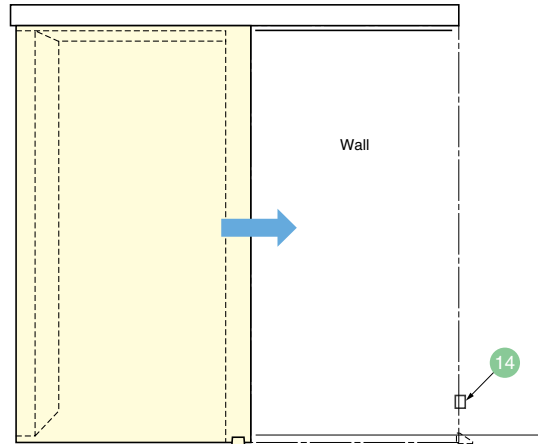
Parts Included

No.	Qty	Part Name	Dimensions	Description
1	1 pc	<b>Damper</b>		Item Code: 280-188-561 Item No.: SC-C08 • Material POM • Colour Black
2	1 pc	<b>Roller A</b>		• Material Steel / POM • Finish Yellow Zinc Chromate / White
3	1 pc	<b>Roller B</b>		• Material Steel / POM • Finish Yellow Zinc Chromate / White
4	1 set	<b>Gear Rack</b>		Item Code: 280-188-560 Item No.: SC-C07 • Material Aluminium Alloy • Finish Plain
5	1 pc	<b>Spring</b>		• Material Steel / Spring Steel • Finish Yellow Zinc Chromate / Plain
6	1 pc	<b>Stopper Roller</b>		• Material Steel • Finish Chromate
7	2 pcs	<b>Door Stopper</b>		• Material Stainless Steel
8	2 pcs	<b>Stopper Plate</b>		• Material Steel • Finish Chromate
9	t=1 :15 pcs t=0.5 :1 pc	<b>Height Adjustment Spacer</b>		• Material Steel • Finish Plain
10	1 pc	<b>Upper Rail</b>		• Material Aluminium Alloy • Finish Anodized
11	2 pcs	<b>Roller Bracket</b>		• Material Steel • Finish Chromate
12	1 pc	<b>Bottom Roller Guide</b>		• Material Stainless Steel / Polyacetal (POM)
13	2 pcs	<b>Anchor 6x30</b>	-	• Material Polyamide (PA) • Colour Grey

**Optional Parts**

No.	Item Code	Part Name	Dimensions	Description
14	280-189-066	<b>Door Stopper</b>		• Material Zinc Alloy (ZDC) & Rubber • Finish Satin Chrome
	162-811			

**Installation of Door Stopper**



ARCHITECTURAL DOOR HARDWARE

SELF CLOSING SLIDE DOOR SYSTEM