

LAMP® FD35EV SLIDING DOOR SYSTEM Installation Manual

(One-Way Soft Close, Recessed Mount Roller) Part No.FD35EVHCP

Thank you for selecting our product. Before starting installation, please read this manual thoroughly to ensure correct installation. Please keep this manual at hand for future reference.

ABOUT THE PRODUCT

- This is a parts set for a sliding door system for stores, public facilities and residence.
- The door closes in 2 soft motion steps.
- Easy door installation and adjustment.

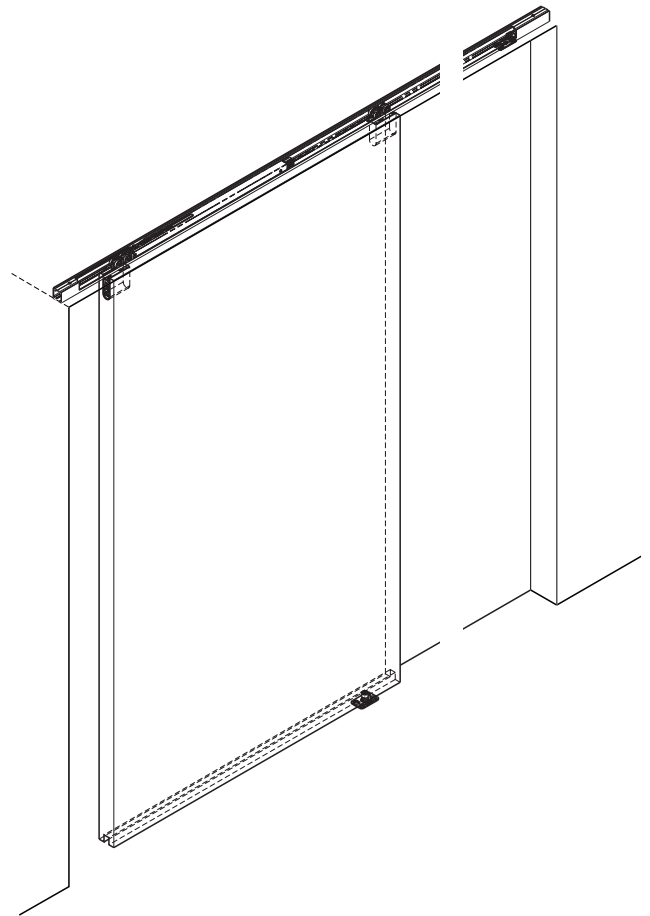
SPECIFICATIONS

Door height	Max. 2400 mm	2401 - 2700 mm
Door width	520 - 1200 mm	700 - 1200 mm
Min. Door thickness	24 mm	
Max. Door weight	35 kg ※ ¹	
Height adjustable range	3 mm upward, 4 mm downward	
Forward / backward adjustment	± 2 mm	

· The closing speed of the soft closing type door may change due to ambient temperature, operating method or installation quality.

· Recommended ambient temperature range is 5 to 40 °C .

※¹ If a light weight door is applied, you may feel the resistance of the soft closer when opening the door.



FOR YOUR SAFE WORK AND CORRECT INSTALLATION

Meaning of symbols

 Warning Caution	 Prohibited	 Required
--	---	---

Warning : If these warnings are not followed, it may result in death or serious injury.


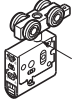
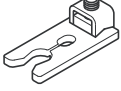
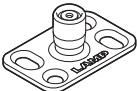
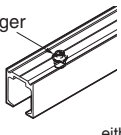
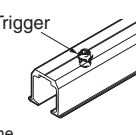
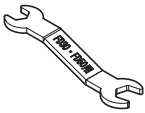
- ❗ This (sliding door system) should be installed by a qualified person. If the system is not installed correctly, the door will not operate smoothly, and may cause injury.
- ❗ It is necessary to manufacture the frame with sufficient strength so that it endures the weight of the door and any impact upon opening/closing the door. Only use designated screws and ensure that they are fastened firmly. A frame with poor strength or loose screws might result in the door falling and causing injury
- ⊘ Do not try to use this product for anything other than its original purpose. Do not use any part for applications outside of its specification.
- ⊘ Do not disassemble nor modify any parts other than those described in this document.

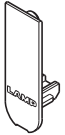
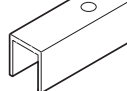

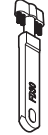


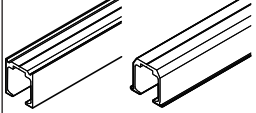
Caution : If these cautions are not followed, it may result in injury or damage.

- ❗ Make sure to follow the designated dimensions, specifications, and horizontal/vertical angles. Make sure that the frame is not warped, since it may affect the movement of the door.
- ❗ If cutting any parts, make sure to remove any burrs before installation. Also check the upper track for any left-over burrs or scraps and remove these.
- ❗ This product is a part for architectural fittings. After installation, make sure to test the finished product thoroughly to ensure that it is well-functioning and safe.
- ❗ Make sure to check the screws for slack at regular intervals (one month from first usage, half a year, and then one time every year is recommended).

COMPONENT PARTS

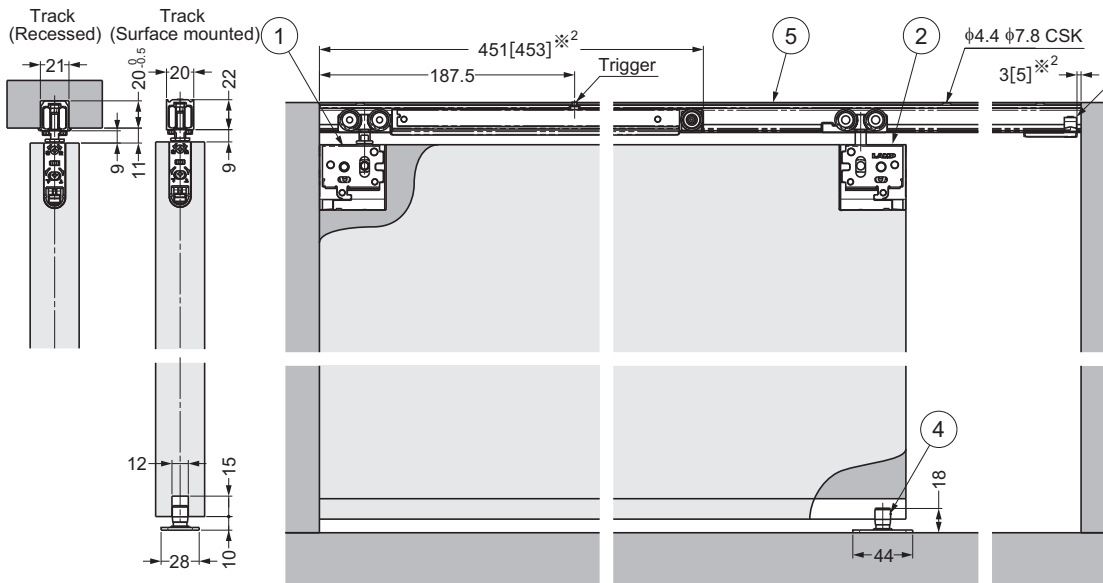
This describes installation of a single sliding door.

No.	①	②	③	④	⑤		⑥
Name	Soft closer	Upper roller	End catch	Floor guide	Upper track (surface mount)	Upper track (recessed mount)	Spanner
Item No.	FD35EV-WRH-SC	FD35EV-WRH	FD30-HTST	FD50-BGR18	FD35EV-TRM-SC	FD35EV-TRH-SC	FD30-FSP
Item	 1 pc	 Without nut 1 pc	 1 pc	 1 pc	 Trigger	 Trigger	 1 pc
Accessories	Flat head tapping screw 3.8×40 3 pcs	Flat head tapping screw 3.8×40 3 pcs	—	Countersunk head tapping screw 4×20 4 pcs	—	—	—
Remarks	—	—	—	—	Recommended screw: Countersunk head tapping screw 3.5×25		Attached to ①

OPTIONAL PARTS	No.	⑦	⑧	⑨	⑩	⑪	⑫	⑬	
	Name	Cover cap	Door guide track	Bumper block	Track cleaner	Trigger	Jig	Upper track for standard sliding (surface mount)	Upper track for standard sliding (recessed mount)
Item No.	FD50-WRH-CP	FD30-HBRT1500SIL	FD35EV-HBB	FD30-TRC	FD35EV-TRG	FD35EV-TRJ	FD35EV-TRM	FD35EV-TRH	
Item	 Thickness: 2 mm	 Hole pitch : 250 mm Pitch end : 30 mm					 either one Hole pitch : 300 mm Pitch end : 30 mm		
Accessories	—	—	—	—	Countersunk head tapping screw 4×30 2 pcs	—	—	—	
Remarks	—	Recommended screw: Countersunk head tapping screw 4×20	—	—	—	—	Recommended screw: Countersunk head tapping screw 3.5×25		

INSTALLATION DRAWING (EXAMPLE)

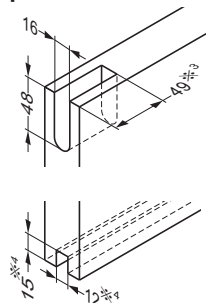
This describes installation of a single sliding door.



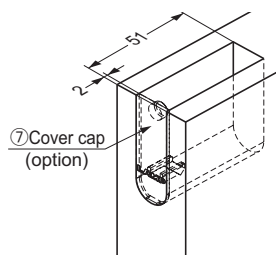
! When a vertical frame is not used, apply a Two-way soft closer.

**2 [] : When cover cap ⑦ (option) is used.

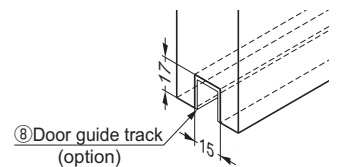
Door process dimension



**3 When using cover cap ⑦



**4 When using door guide track ⑧.



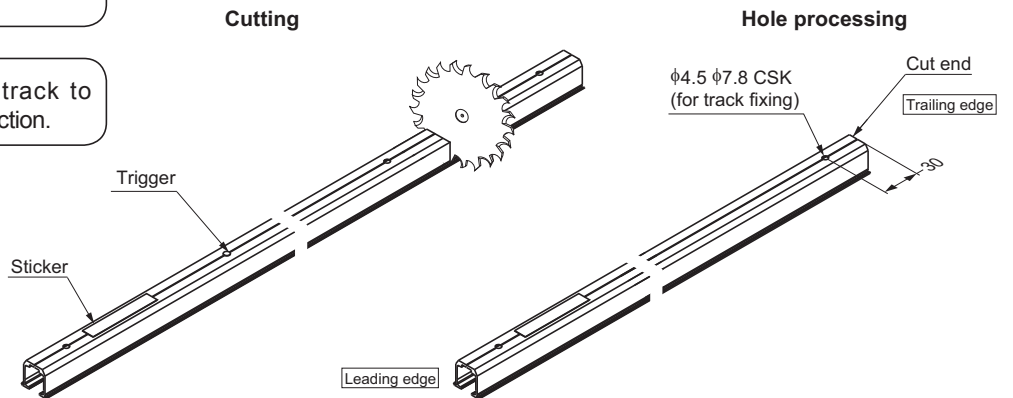
1 Cutting and Providing Hole on Upper Track



Do not cut trigger side (with sticker) of upper track.

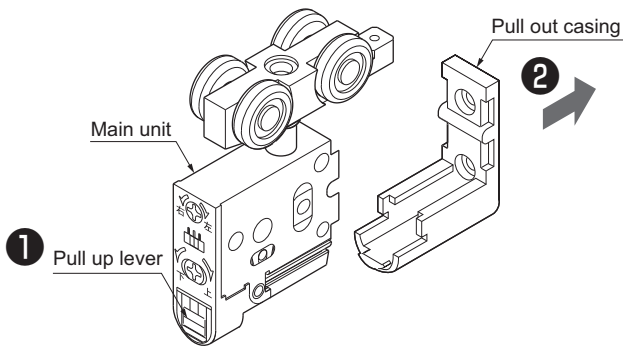


When cutting, reinforce the track to prevent deformation at the cut section.



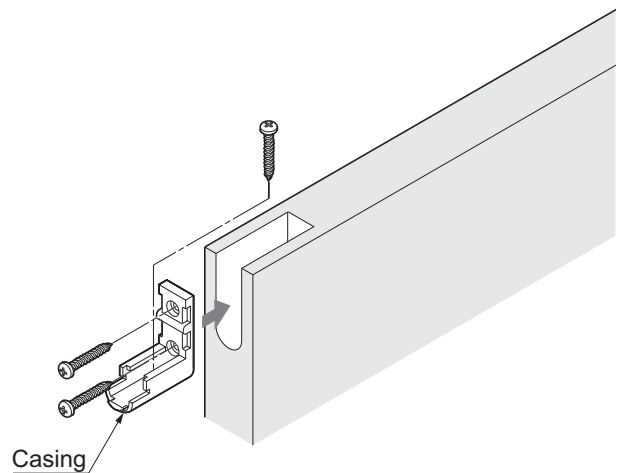
2 Removing Casing

Soft closer and upper roller: Separate main unit from casing.



3 Installing Casing

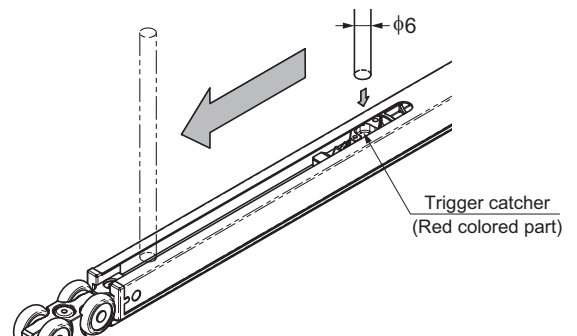
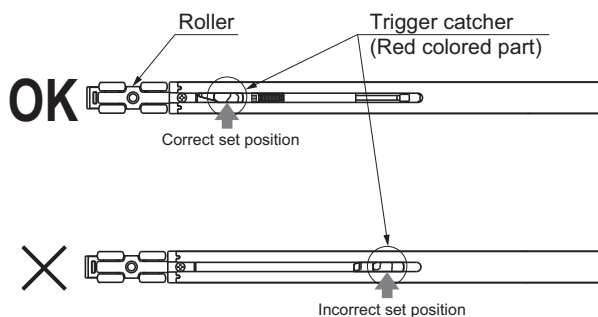
Fasten upper roller firmly with attached screws.



4 Verification Before Installing Soft Closer



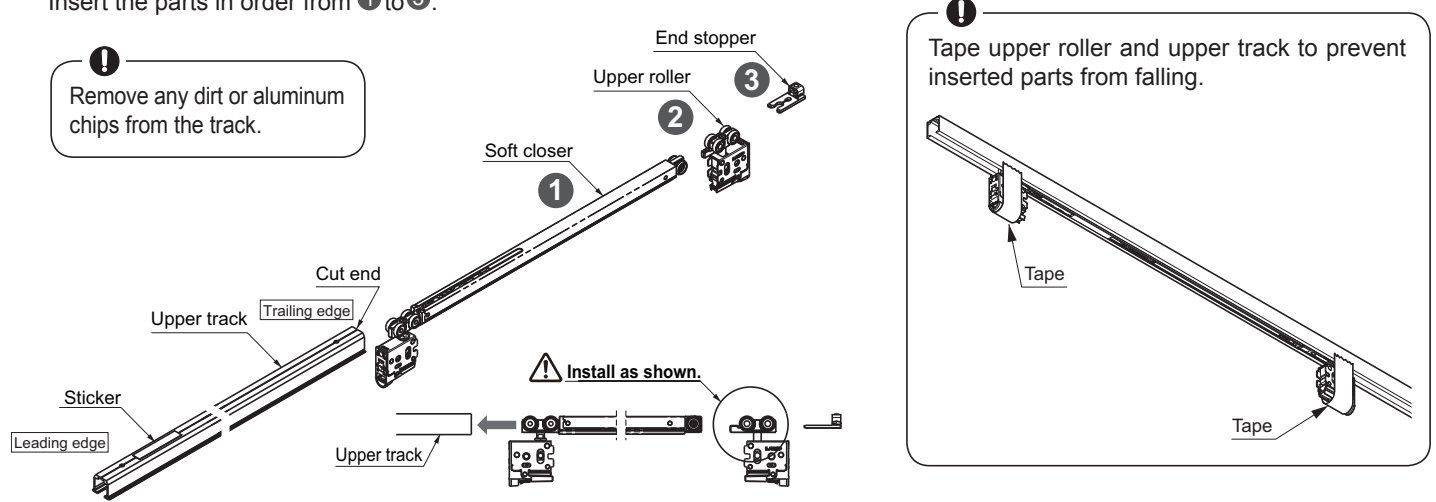
Without verification the self closing feature may fail.



If the position is wrong, pull back the trigger catcher to the correct position using a 6 mm diameter round bar.

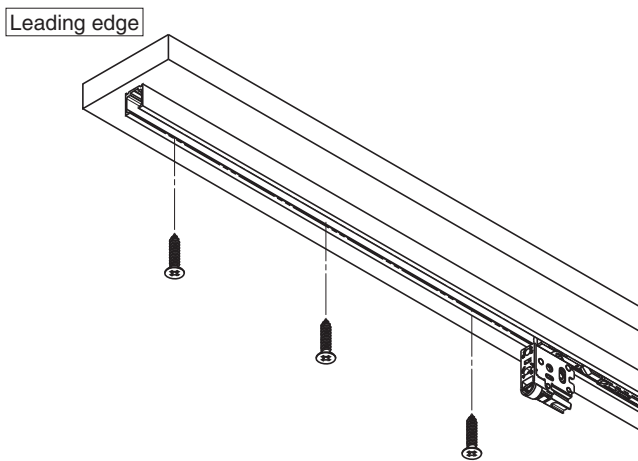
5 Inserting Parts into Upper Track

Insert the parts in order from ① to ③.

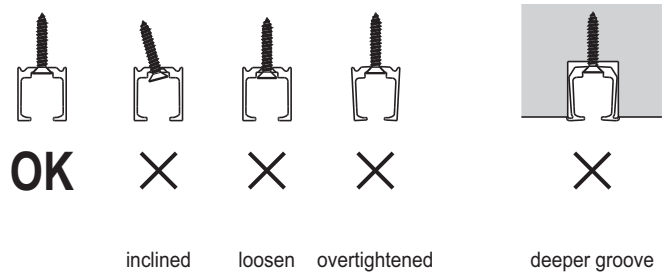


6 Fixing Upper Track

(Recommended screw: Countersunk head tapping screw 3.5x25)

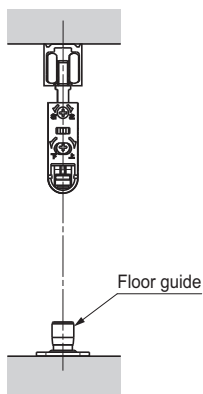


! Be careful not to overtighten the screws and screw heads protruding on upper track. It may cause deformation of track or damage of soft closer.

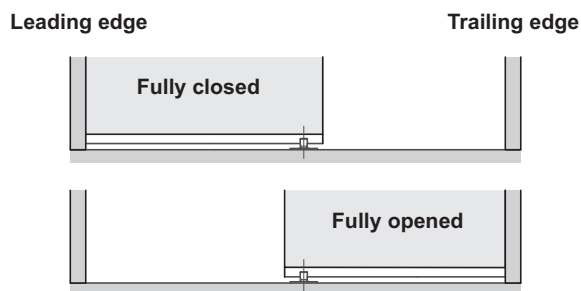


7 Fixing Floor Guide Temporarily

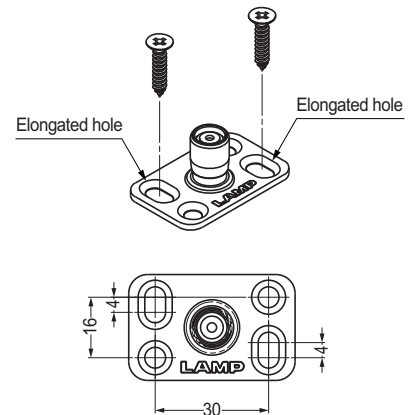
Position floor guide just below the center of upper track.



Position the floor guide so that the roller part stays under the door when it is opened or closed.

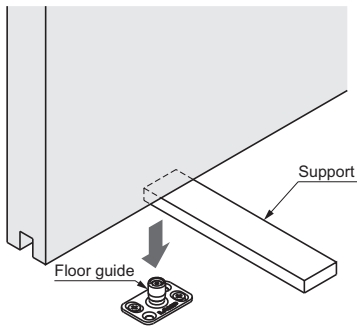


Temporarily fasten through the elongated holes with the provided screws.

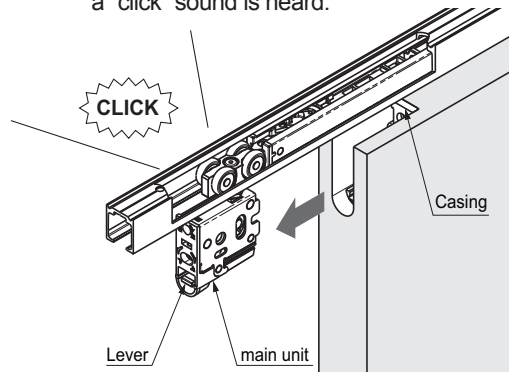


8 Hanging Door

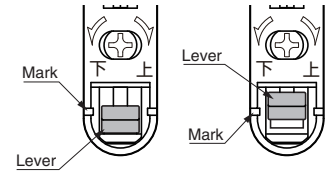
Put a 10 mm support under the door. While holding the door, insert the floor guide into the groove under the door.



Insert the upper roller into the casing until a "click" sound is heard.



OK X



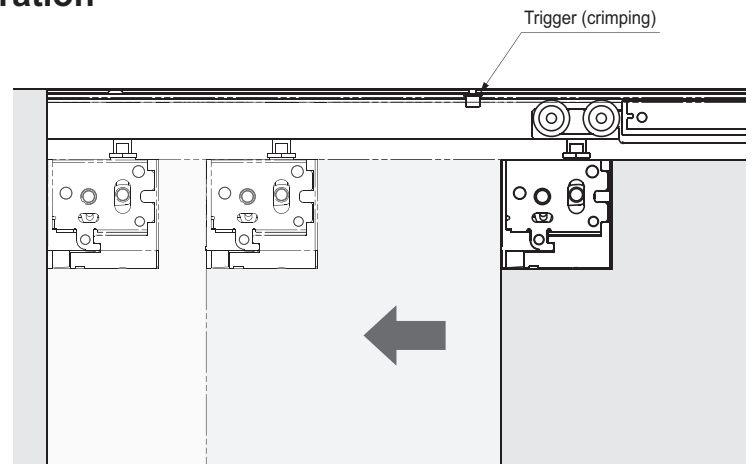
Confirm that upper roller is not dislocated from casing, for both door sides.

9 Verification of Sliding door Closer Operation

- (1) Remove the 10 mm support under the door.
- (2) Close the door slowly and check that the soft closer works correctly. The soft closer is engaged approximately 100 mm at the leading edge before the door reaches its final position.
- (3) Please refer to the "Troubleshooting" section when the soft closer does not work correctly.

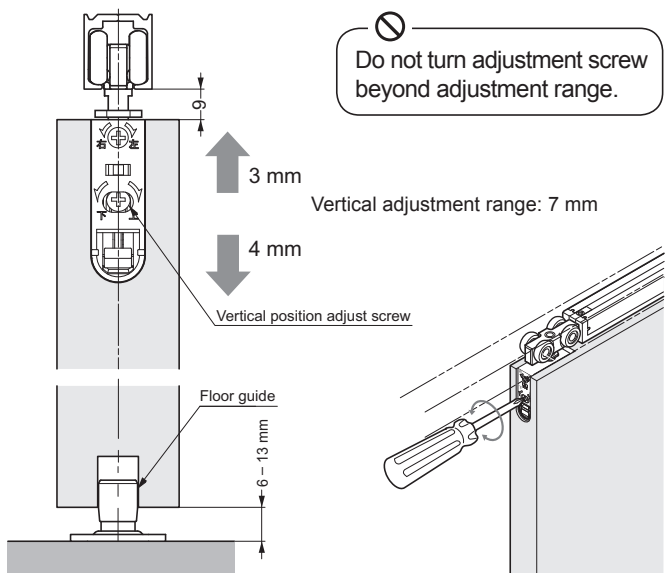


Do not close the door with excessive force. It may cause damage to the soft close mechanism.



10 Adjusting Door Position

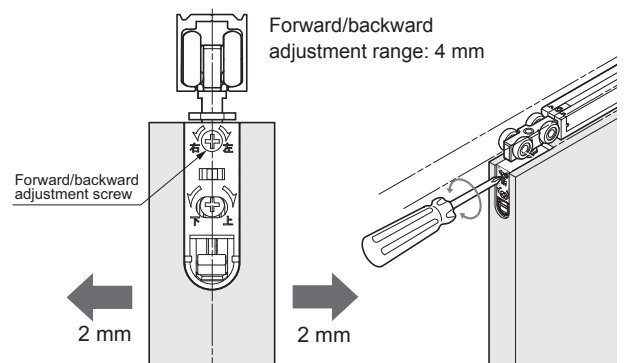
Adjust the door parallel to the upper track with 6 – 13 mm of clearance between the door and floor.



Do not turn adjustment screw beyond adjustment range.



Do not use electric screw driver.

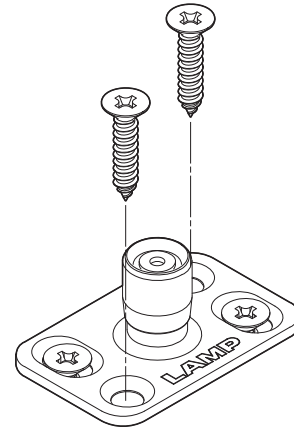
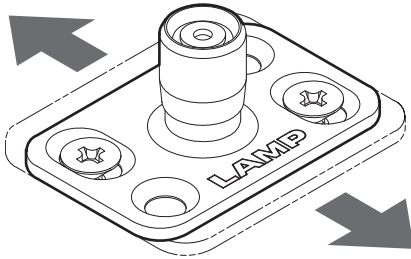


11 Adjusting, Fixing Floor Guide

If the door movement is not smooth, remove the door, then adjust the floor guide forwards or backwards.

Tighten all 4 screws after the adjustment.

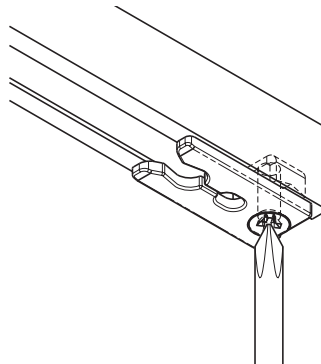
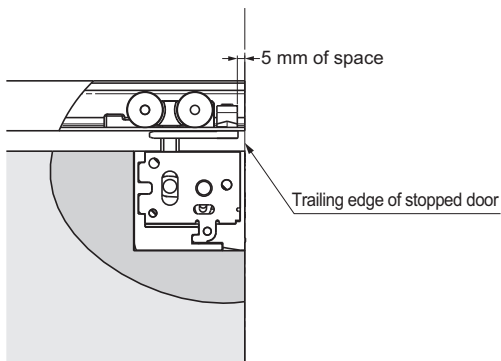
Adjustment range: 4 mm



12 Fixing End Catch Position (Trailing edge)

Fix the end catch 5 mm from the position where door stops.

Adjust the position of the end catch where it catches the hanger bolt of the roller when the door is stopped by the frame or door stopper.

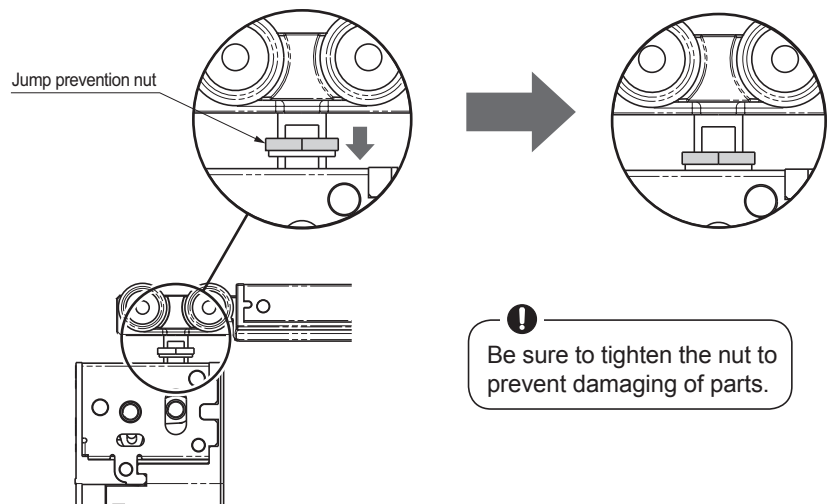
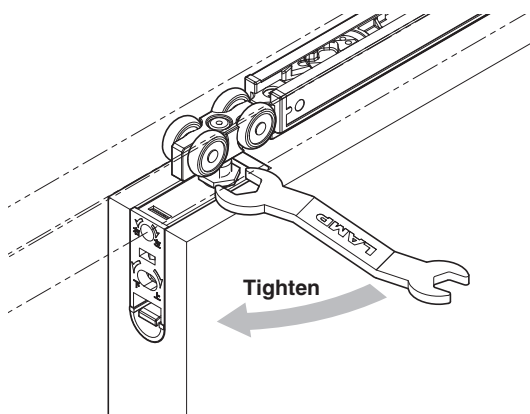


Do not overtighten the screw. It may deform the part.

13 Fixing the Jump Prevention Nut

The jump prevention nut is on the hanger bolt of the upper roller.

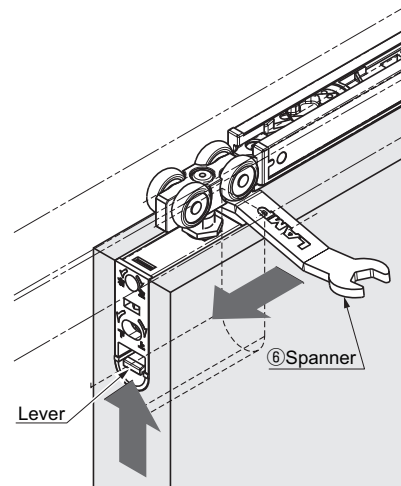
Tighten the nut with provided spanner until it contacts the soft closer.



Supplement 1 How to remove door

Use a 10 mm support under the door.
Then pull out the upper roller main unit from the door while raising the lever.

It will be easier if you slide the hanger bolt with a spanner.

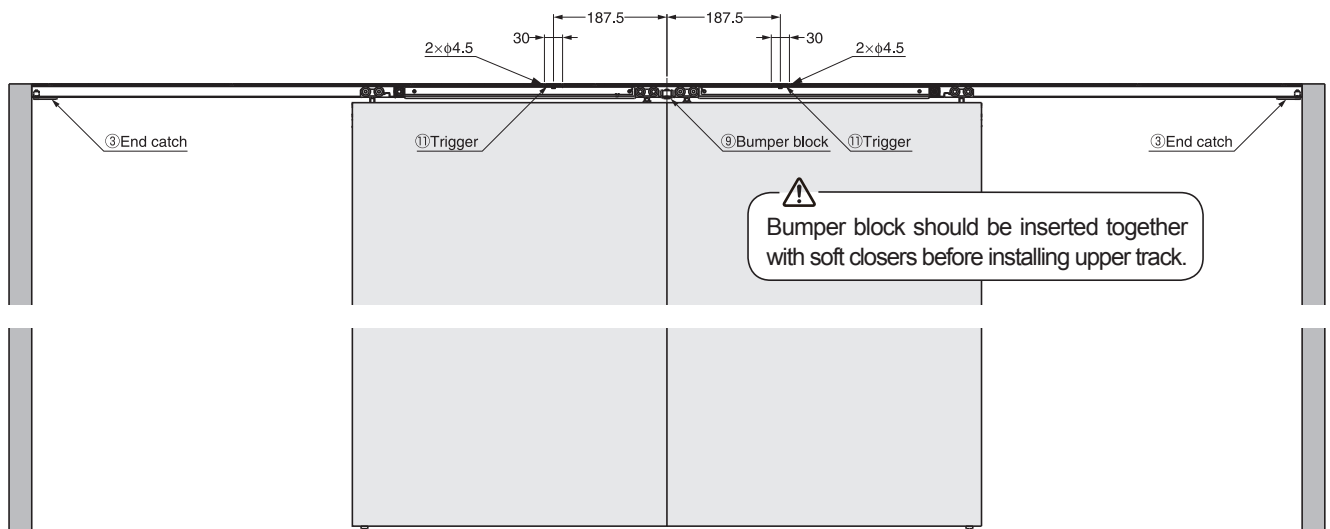


Supplement 2 Position of Trigger for in Line Sliding

Process holes according to the drawing below.



Use the track for standard sliding ⑬ for this application.



Final verification	Verify that all screws are securely tightened, and verify that all screws have been used.
PERIODICAL INSPECTION	<ul style="list-style-type: none"> · Clean inside of track. · Check upper and lower gaps between the door and frame. If necessary, adjust the gaps.

■ TROUBLESHOOTING

Trouble	Checkpoint	Solution
Door stops during soft closing	Check if door bottom contacts with floor.	Verify that the track fixing screws are not loosened. Then, adjust the door height such that the clearance between the door bottom and floor is 6 - 13 mm.
	Check if upper track is set horizontally.	Using a level gauge, reset upper track horizontally.
	Check if mohair seal is installed.	Reduce the friction between mohair and door.
No soft closing	Check if trigger is installed.	Install trigger to correct position.
	Check if door is closed by excessive force.	Do not close door by excessive force as it may damage soft closer.
	The position of the trigger catcher may become dislocated (See section 4.)	Slowly move the door toward the leading edge, then push the door firmly. Repeat this action on the opposite side as well. If it is still not improved, check the status of the trigger catcher in section 4.
Abnormal noise during operation	Check if door bottom contacts with floor.	Verify that the track fixing screws are not loosened. Then, adjust the door height such that the clearance between the door bottom and floor is 6 - 13 mm.
	Check if door touches adjacent parts.	Correct door position to avoid contact with adjacent objects. Adjust position of the floor guide.
	Check track rollers for aluminum dust.	Remove the track and pull out the roller. Then, clean the roller.
	Check for loose screws retaining the upper track.	Tighten the screw.
Heavy door operation	Check if door bottom contacts with floor.	Verify that the track fixing screws are not loosened. Then, adjust the door height such that the clearance between the door bottom and floor is 6 - 13 mm.
	Check if door touches adjacent parts.	Correct door position to avoid contact with adjacent objects. Adjust position of the floor guide.
Door does not move.	Check the track retaining screws for looseness.	Retighten screws to free the roller.
Door starts to move.	Check the upper track if it is set horizontally.	Using a level gauge, reset upper track horizontally.
End catch does not work properly.	Check if roller is installed correctly.	If a roller for Two-way soft closer (FD35EV-WRH-N) is installed by mistake, jump prevention nut on the roller interferes with the end catch. Replace it with correct roller.

SUGATSUNE KOGYO CO.,LTD
Tokyo, JAPAN
Phone: +81 (0)3 3866 2260 E-mail:export@sugatsune.co.jp

SUGATSUNE KOGYO (UK) LTD
Reading, UK
Phone: +44 118 9272 955 E-mail:sales@sugatsune.co.uk

SUGATSUNE EUROPE GmbH
Düsseldorf, GERMANY
Phone: +49 211 53812900 E-mail:sales@sugatsune.eu

SUGATSUNE SHANGHAI Co., LTD
Shanghai, CHINA
Phone: +86 21 3632 1858 E-mail:lamp@sugatsune.com.cn

Guangzhou, CHINA
Phone: +86 20 6639 3552 E-mail:lamp@sugatsune.com.cn

SUGATSUNE KOGYO INDIA PRIVATE LIMITED
Mumbai, INDIA
Phone: +91 22 28314490/91 E-mail:sales@sugatsune.in

SUGATSUNE AMERICA, INC
California, USA
Phone: +1 310 329 6373 E-mail:sales@sugatsune.com

Chicago, USA
Phone: +1 312 461 1081 E-mail:chicagoshowroom@sugatsune.com.

SUGATSUNE CANADA, INC.
Phone: +1 514 312 5267 E-mail:support@sugatsune.ca

ISO9001(Japan Offices and Sugatsune America) and ISO14001(Chiba Production division and Logistics center), certified.

2019.01 0965-2