

STAINLESS STEEL DRAW LATCH

TEST METHOD 7
STAINLESS 304 STEEL

SCC-TF30

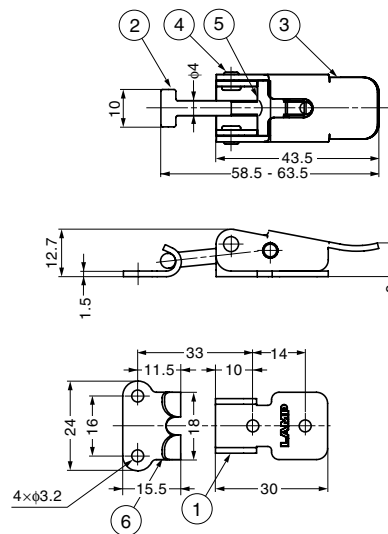


Features

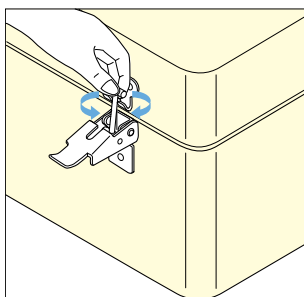
Adjustment shaft can be twisted to adjust length post installation.

Recommended Screw

Pan head screw M3



Adjustment



| No. | Part Name | Material | Finish |
|-----|------------------|--------------------------|--------|
| ① | Base | Stainless Steel (SUS304) | Mirror |
| ② | Arm | Stainless Steel | - |
| ③ | Lever | Stainless Steel (SUS304) | Mirror |
| ④ | Shaft | Stainless Steel (SUS303) | Plain |
| ⑤ | Adjustment Shaft | Stainless Steel (SUS303) | Plain |
| ⑥ | Counter Plate | Stainless Steel (SUS304) | Mirror |

| Item Code | Item Name | Load Capacity N | Load Capacity kgf | Weight | Box | Carton |
|-------------|-----------|-----------------|-------------------|--------|---------|---------|
| 120-028-716 | SCC-TF30 | 500 N | 51 kgf | 32 g | 100 pcs | 400 pcs |

STAINLESS STEEL DRAW LATCH

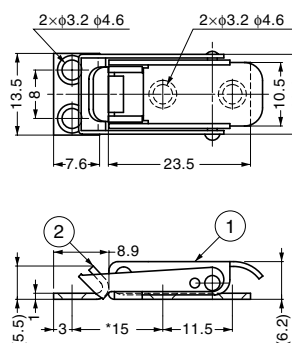
STAINLESS 304 STEEL

SCC-25



Features

- Made entirely out of stainless steel
- When closed, the spring is not visible for a clean and sleek design.
- Built in spring



*Dimension shown is in case of clamping force "0".

| No. | Part Name | Material | Finish |
|-----|---------------|--------------------------|----------|
| ① | Body | Stainless Steel (SUS304) | Polished |
| ② | Counter Plate | Stainless Steel (SUS304) | Polished |

| Item Code | Item Name | Weight | Box | Carton |
|-------------|-----------|--------|---------|-----------|
| 120-021-949 | SCC-25 | 6 g | 100 pcs | 1,000 pcs |