

STAINLESS STEEL DRAW LATCH

TEST METHOD 7
STAINLESS 304 STEEL

SCC-TF30

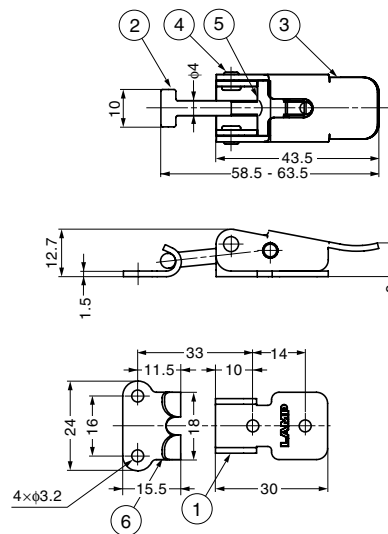


Features

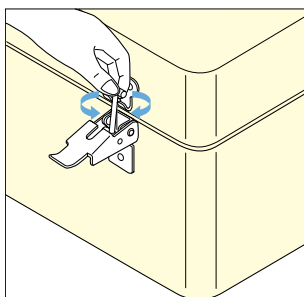
Adjustment shaft can be twisted to adjust length post installation.

Recommended Screw

Pan head screw M3



Adjustment



No.	Part Name	Material	Finish
①	Base	Stainless Steel (SUS304)	Mirror
②	Arm	Stainless Steel	-
③	Lever	Stainless Steel (SUS304)	Mirror
④	Shaft	Stainless Steel (SUS303)	Plain
⑤	Adjustment Shaft	Stainless Steel (SUS303)	Plain
⑥	Counter Plate	Stainless Steel (SUS304)	Mirror

Item Code	Item Name	Load Capacity N	Load Capacity kgf	Weight	Box	Carton
120-028-716	SCC-TF30	500 N	51 kgf	32 g	100 pcs	400 pcs

STAINLESS STEEL DRAW LATCH

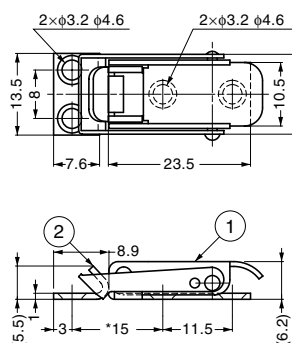
STAINLESS 304 STEEL

SCC-25



Features

- Made entirely out of stainless steel
- When closed, the spring is not visible for a clean and sleek design.
- Built in spring



*Dimension shown is in case of clamping force "0".

No.	Part Name	Material	Finish
①	Body	Stainless Steel (SUS304)	Polished
②	Counter Plate	Stainless Steel (SUS304)	Polished

Item Code	Item Name	Weight	Box	Carton
120-021-949	SCC-25	6 g	100 pcs	1,000 pcs