

# TOP MOUNTED SLIDING DOOR (TWO-WAY SOFT CLOSE TYPE/OUTSET/RECESSED UPPER ROLLER)

INSTRUCTION

FD50-H

This two-way soft closing sliding door closes and fully opens softly and quietly. Can be retrofitted to the top wall of entrances.

Passed 200,000 open/ close cycles in private test

Features	Door Size (per door)	Adjustment
<p><b>Two-Way Soft Close</b> (both directions)</p> <p>With Sequential Double Damper (2 stages)</p>	<p>30 - 36 mm</p> <p>Maximum 2400 mm</p> <p>680 - 1500 mm</p> <p>Weight: Maximum 50kg 25 kg or more recommended</p>	<p>-3 mm +4 mm</p> <p>±2 mm</p>

## Soft closing starts at approx. 115 mm for reliable operation

2-Stage

Soft opening With Sequential Double Damper in two stages enables **less force** to be used when opening too.

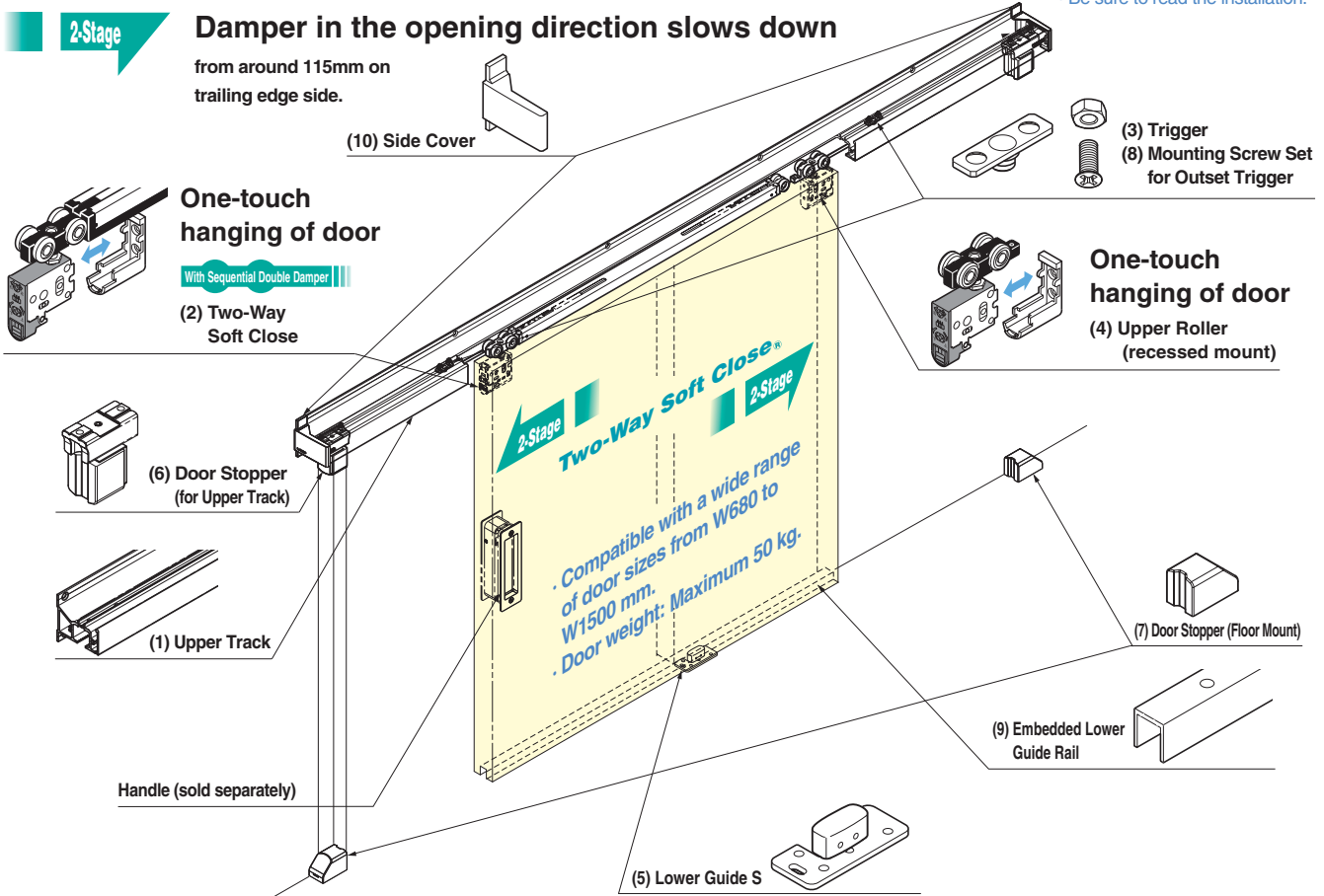
### Remarks

- Be sure to read the precautions for this product.
- Be sure to read the installation.

2-Stage

## Damper in the opening direction slows down

from around 115mm on trailing edge side.



ARCHITECTURAL DOOR HARDWARE

TOP MOUNTED SLIDING DOOR

### Standard part list

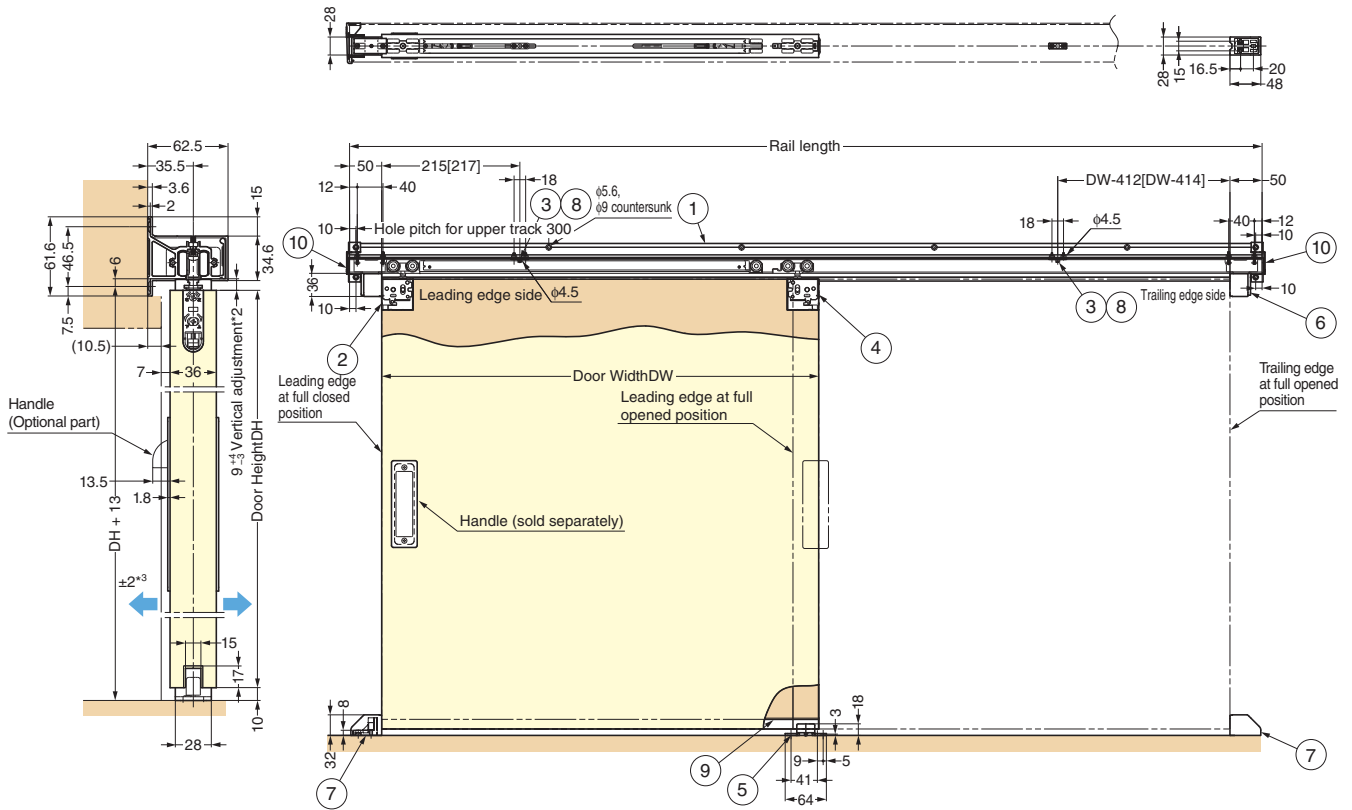
See "Type of Outset Upper Track" for details on the type of upper track used for (1).

	Necessary Parts										Necessary Parts (Select Colour)
Parts	(1) Upper Track	(2) Two-Way Soft Close*1	(3) Trigger	(4) Upper Roller (recessed mount)	(5) Lower Guide S	(6) Door Stopper (for Upper Track)	(7) Door Stopper (Floor Mount)	(8) Mounting Screw Set for Outset Trigger (2 pcs)	(9) Embedded Lower Guide Rail	(10) Side Cover	
Item Code		250-020-764	Included with Two-Way Soft Close	250-020-765	250-020-773	250-041-968	250-041-956	250-041-967	250-019-971		
Item Name		FD50-WRH-DSC		FD50-WRH	FD50-BG18	FD50-TRA-STP	FD35EV-FSTP	FD50-TRA-TRGN	FD30-HBRT1500SIL		
Two-Way Soft Close Type	Length 2120 mm x 1 pc	1 pc	2 pcs	1 pc	1 pc	2 pcs	2 pcs	2 Sets	1 pc		1 set (Grey) 250-041-969 FD50-HASC-GR 1 set (Brown) 250-041-970 FD50-HASC-BR 1 set (White) 250-041-971 FD50-HASC-WT

\*1 Includes Trigger and Trigger Installation Jig. Can also be purchased separately.

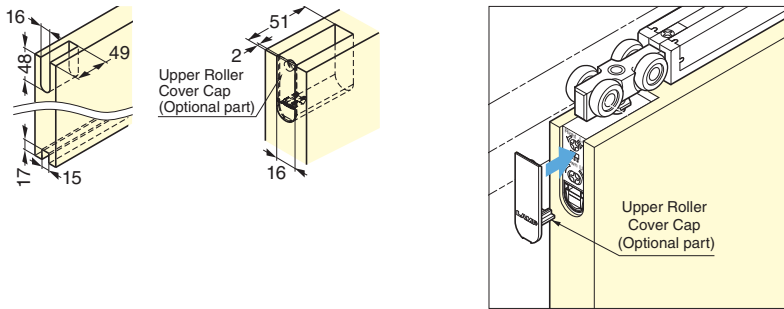
### Installation Example

- \*2 The gap between the upper track and the door can be adjusted within a range of -3 mm to +4 mm.
- \*3 The horizontal position can be adjusted within a range of -2 mm to +2 mm from the end of the door.

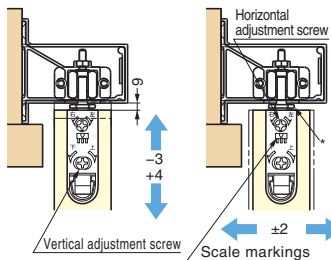


[ ] indicates the dimensions when the upper roller cover cap (optional) is attached.

### Cut Out Dimensions

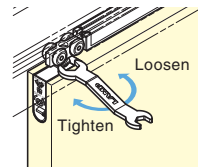


### Door Adjustment



#### Internal mechanism prevents bouncing during closing

Prevents the door from bouncing up after the soft close function has been activated.



After adjusting, tighten the spring-up prevention nuts (necessary parts (2) and (3)), using a spanner (optional item) with a nominal size of 12 until the nuts come into contact with the upper track.

- Can be adjusted with one ⊕No. 2 screwdriver.
- Incremental markings are provided for horizontal adjustment from the end of the door.

\*Includes nuts to prevent springing up

### Type of Outset Upper Track

Included screws: Size 4 x 40 cross-recessed flat head tapping screws

Specifications	Length	Silver		Amber		White	
		Item Code	Item Name	Item Code	Item Name	Item Code	Item Name
(1) Outset Upper Track 	2120 mm	250-041-972	FD50-TRA2120-SL	250-041-973	FD50-TRA2120-UM	250-041-974	FD50-TRA2120-WT
	3020 mm	250-041-975	FD50-TRA3020-SL	250-041-976	FD50-TRA3020-UM	250-041-977	FD50-TRA3020-WT