

DISK DAMPER



UDD



Features

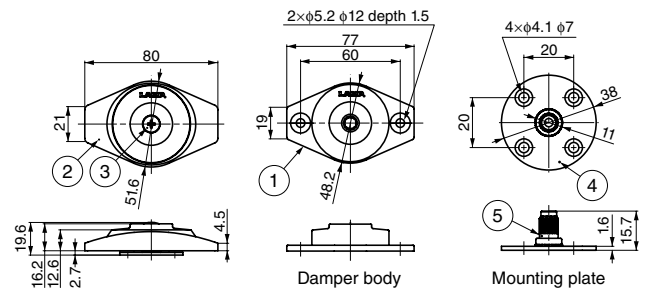
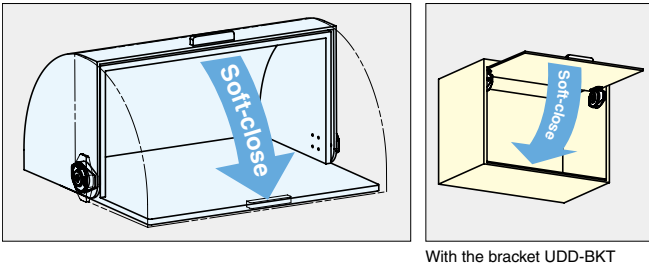
- Passed 30,000 cycles in a private test.
- Designed to be installed at the center axis of rotating flap doors.
- Simple design integrates well with frames for a sleek design.
- 3 different torque amounts to satisfy a wide range of flap doors.
- Great solution for food showcases and acrylic displays.
- When combined with the UDD-BKT, can be used for upward-opening doors.

Sold Separately

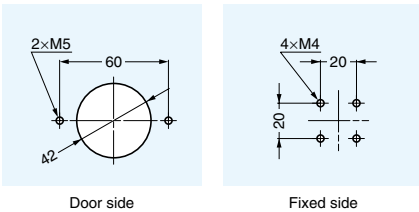
Bracket UDD-BKT (P.522)



Application Example

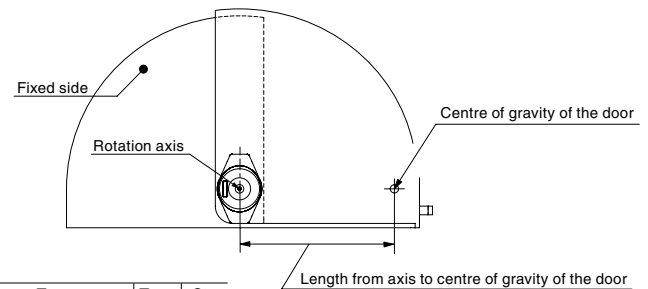


Cut Out Dimensions



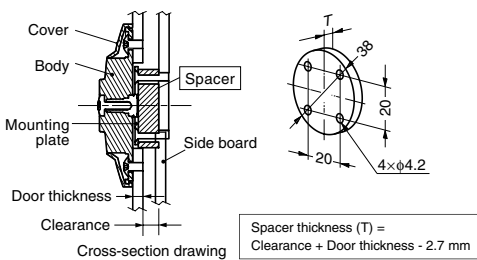
Torque Calculation

Torque =
Door weight (kg) × 9.8 × Length from axis to centre of gravity of the door



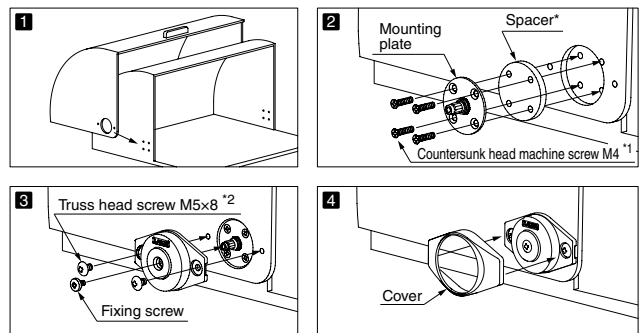
Torque	Type	Qty
1.0 - 2.0 N-m	S	2 pcs
2.0 - 4.0 N-m	M	2 pcs
4.0 - 6.0 N-m	H	2 pcs

Spacer



*Customer should provide spacer.

How to Install



*1, *2 screws and spacer not included.

Item Code	Item Name	Damping Direction	Torque Moment/piece	Weight	Box
180-022-306	UDD-S-L	Anticlockwise	0.5 - 1.0 N-m	99 g	20 pcs
180-022-307	UDD-S-R	Clockwise	(5.1 - 10.2 kgf-cm)	99 g	20 pcs
180-022-308	UDD-M-L	Anticlockwise	1.0 - 2.0 N-m	99 g	20 pcs
180-022-309	UDD-M-R	Clockwise	(10.2 - 20.4 kgf-cm)	99 g	20 pcs
180-022-310	UDD-H-L	Anticlockwise	2.0 - 3.0 N-m	99 g	20 pcs
180-022-311	UDD-H-R	Clockwise	(20.4 - 30.6 kgf-cm)	99 g	20 pcs

No.	Part Name	Material	Finish/Colour
①	Damper Body	ABS	Light Grey
②	Cover	ABS	Light Grey
③	Screw	Steel	Nickel
④	Mounting Plate	Steel	Nickel
⑤	Shaft	Steel	Zinc Chromate